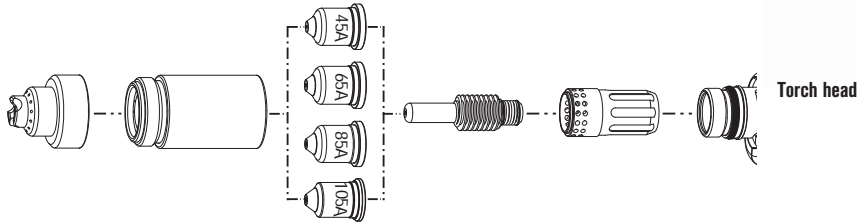


Hypertherm® powermax105®

Duramax hand torch consumables

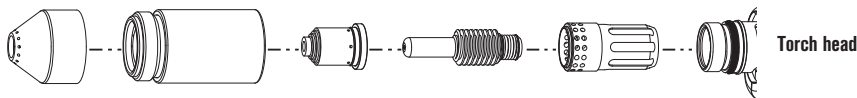


Drag-cutting consumables



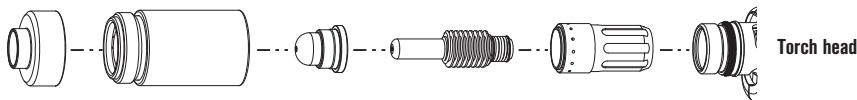
	Shield	Retaining cap	Nozzle	Electrode	Swirl ring
45 A	220818*	220854	220941*	220842*	220994
65 A	220818*	220854	220819*	220842*	220994
85 A	220818*	220854	220816*	220842*	220994
105 A	220992*	220854	220990*	220842*	220994

Gouging consumables



	Shield	Retaining cap	Nozzle	Electrode	Swirl ring
65 A/85 A	220798	220854	220797*	220842*	220994
105 A	220798	220854	220991*	220842*	220994

FineCut consumables



	Shield/Deflector	Retaining cap	Nozzle	Electrode	Swirl ring
45 A	220931	220854	220930*	220842*	220947



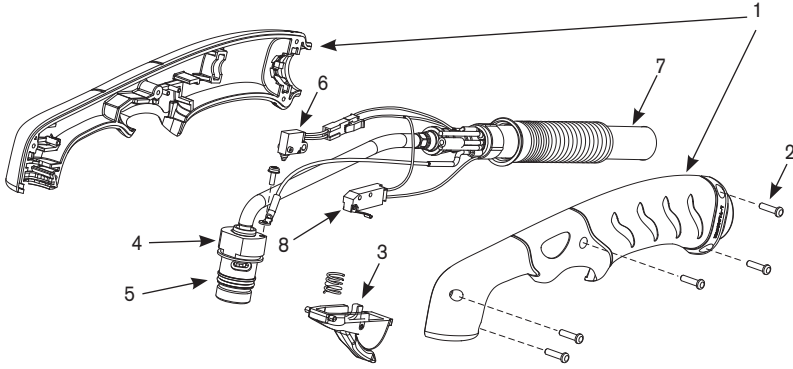
Duramax series

All-in-one and FineCut kits are available, see pages 25–26 or visit: www.hypertherm.com/consumablekits.

*Consumables available in a bulk package option, see page 27 for bulk package information.

New CopperPlus longer life electrode available for Duramax torches. Please refer to the back cover of the catalog for additional information. CopperPlus part number 220777.

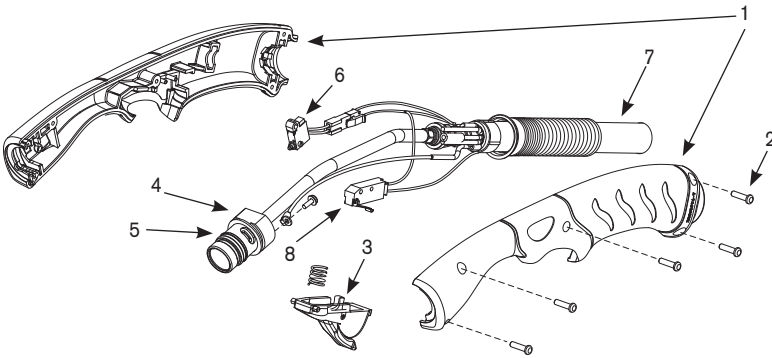
Duramax 75° and Duramax 15° hand torch assemblies



Duramax 75° hand torch assembly

Part number	Description
059473	Duramax 75° hand torch assembly with 7.6 m (25') lead
059474	Duramax 75° hand torch assembly with 15.2 m (50') lead
059475	Duramax 75° hand torch assembly with 22.8 m (75') lead
1. 228954	Kit: Duramax 75°/HRT Torch handle replacement
2. 075714	Handle screws, #4 x 1/2 slotted TORX pan head, S/B
3. 228721	Kit: Duramax 75°/Duramax 15°/HRT/HRTs (spring and trigger assembly)
4. 228958	Kit: Duramax 75° Torch main body replacement
5. 058519	O-ring
6. 228719	Kit: Duramax 75° Cap-sensor switch replacement
7. 228959	Kit: Duramax 75° Torch lead replacement, 7.6 m (25')
7. 228960	Kit: Duramax 75° Torch lead replacement, 15.2 m (50')
7. 228961	Kit: Duramax 75° Torch lead replacement, 22.8 m (75')
8. 005252	Trigger start switch
223254†	Kit: 105 A Work lead with hand clamp, 7.6 m (25')

†Other work lead options available.



Duramax 15° hand torch assembly

Part number	Description
059470	Duramax 15° hand torch assembly with 7.6 m (25') lead
059471	Duramax 15° hand torch assembly with 15.2 m (50') lead
059472	Duramax 15° hand torch assembly with 22.8 m (75') lead
1. 228955	Kit: Duramax 15° Torch handle replacement
2. 075714	Handle screws, #4 x 1/2 slotted TORX pan head, S/B
3. 228721	Kit: Duramax 15°/Duramax 75°/HRT/HRTs (spring and trigger assembly)
4. 228957	Kit: Duramax 15° Torch main body replacement
5. 058519	O-ring
6. 228109	Kit: Duramax 15° Cap-sensor switch replacement
7. 228959	Kit: Duramax 15° Torch lead replacement, 7.6 m (25')
7. 228960	Kit: Duramax 15° Torch lead replacement, 15.2 m (50')
7. 228961	Kit: Duramax 15° Torch lead replacement, 22.8 m (75')
8. 005252	Trigger start switch
223254†	Kit: 105 A Work lead with hand clamp, 7.6 m (25')

†Other work lead options available.

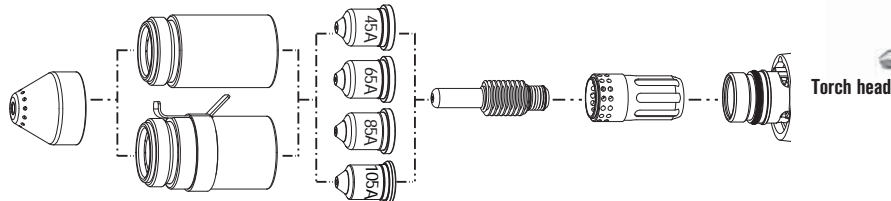


Hypertherm® powermax105®

Duramax machine torch consumables

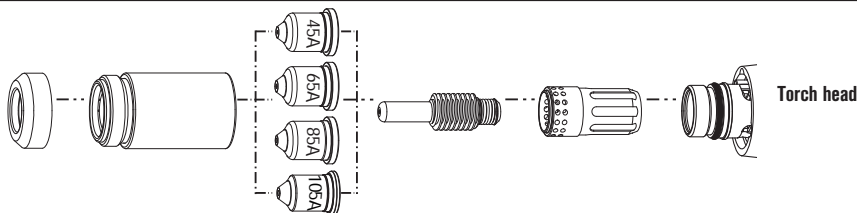


Mechanized consumables



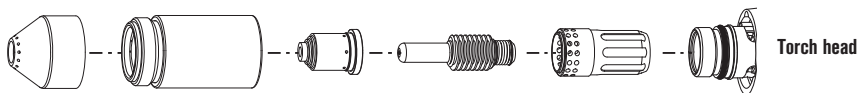
	Shield	Retaining cap	Nozzle	Electrode	Swirl ring
45 A	220817*	220854	220941*	220842*	220994
65 A	220817*	220854	220819*	220842*	220994
85 A	220817*	220854	220816*	220842*	220994
105 A	220993*	220854	220990*	220842*	220994
Ohmic		220953			

Unshielded consumables



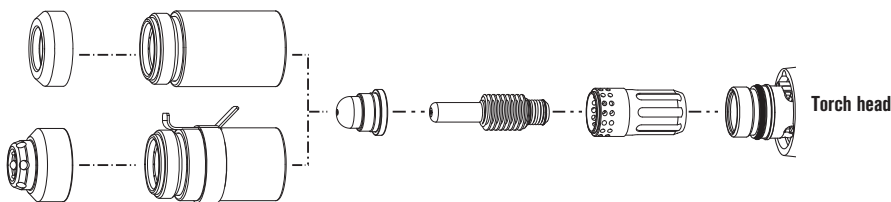
	Shield/Deflector	Retaining cap	Nozzle	Electrode	Swirl ring
45 A	220955	220854	220941*	220842*	220994
65 A	220955	220854	220819*	220842*	220994
85 A	220955	220854	220816*	220842*	220994
105 A	220955	220854	220990*	220842*	220994

Gouging consumables



	Shield	Retaining cap	Nozzle	Electrode	Swirl ring
65 A/85 A	220798	220854	220797*	220842*	220994
105 A	220798	220854	220991*	220842*	220994

FineCut consumables



	Shield/Deflector	Retaining cap	Nozzle	Electrode	Swirl ring
45 A	220955	220854	220930*	220842*	220994
Ohmic	220948	220953			



Duramax series



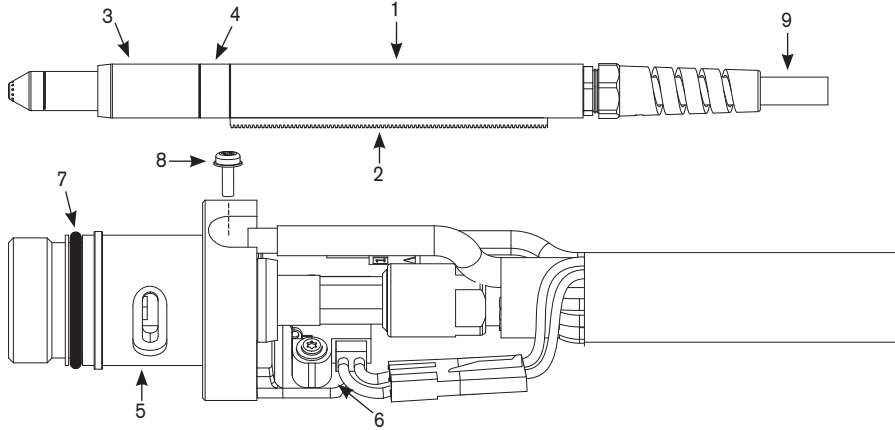
Duramax robotic series

All-in-one and FineCut kits are available, see pages 25–26 or visit: www.hypertherm.com/consumablekits.

*Consumables available in a bulk package option, see page 27 for bulk package information.

New CopperPlus longer life electrode available for Duramax torches. Please refer to the back cover of the catalog for additional information. CopperPlus part number 220777.

Duramax 180° and Duramax 180° mini machine torch assemblies



Duramax 180° torch assembly

Part number	Description
059476	Duramax 180° machine torch assembly with 4.5 m (15') lead
059477	Duramax 180° machine torch assembly with 7.6 m (25') lead
059478	Duramax 180° machine torch assembly with 10.7 m (35') lead
059479	Duramax 180° machine torch assembly with 15.2 m (50') lead
059480	Duramax 180° machine torch assembly with 22.8 m (75') lead
1. 228737	Kit: Duramax 180° positioning sleeve
2. 228738	Kit: Duramax 180° removable gear rack
3. 228735	Kit: Duramax 180°/Duramax 180° torch front mounting sleeve
4. 228736	Kit: Duramax 180°/Duramax 180° torch adapter ring (coupler)
5. 228716	Kit: Duramax 180°/Duramax 180° torch main body replacement
6. 228720	Kit: Cap-sensor switch replacement
7. 058519	O-ring
8. 075504	Pilot terminal screw
9. 228730	Kit: Duramax 180°/Duramax 180° torch lead replacement, 4.5 m (15')
9. 228731	Kit: Duramax 180°/Duramax 180° torch lead replacement, 7.6 m (25')
9. 228732	Kit: Duramax 180°/Duramax 180° torch lead replacement, 35' (10. m)
9. 228733	Kit: Duramax 180°/Duramax 180° torch lead replacement, 15.2 m (50')
9. 228734	Kit: Duramax 180°/Duramax 180° torch lead replacement, 22.8 m (75')
128650	Remote start pendant for machine torch, 7.6 m (25')
128651	Remote start pendant for machine torch, 15.2 m (50')
128652	Remote start pendant for machine torch, 22.8 m (75')
223254†	Kit: 105 A Work lead with hand clamp, 7.6 m (25')

†Other work lead options available.

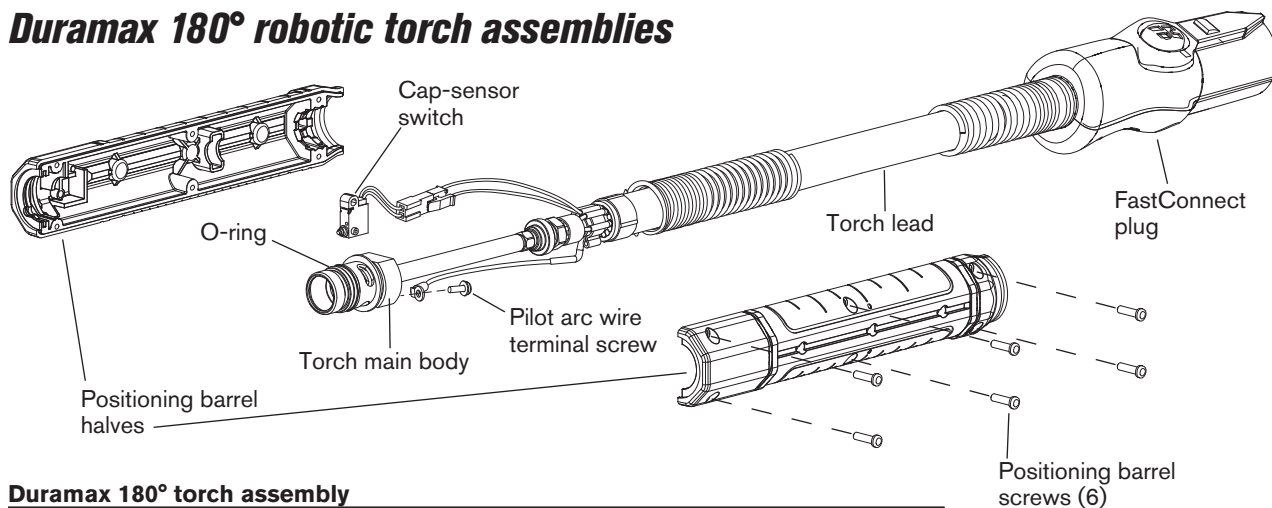
Duramax 180° mini torch assembly

Part number	Description
059481	Duramax 180° mini machine torch assembly with 4.5 m (15') lead
059482	Duramax 180° mini machine torch assembly with 7.6 m (25') lead
059483	Duramax 180° mini machine torch assembly with 10.7 m (35') lead
059484	Duramax 180° mini machine torch assembly with 15.2 m (50') lead
3. 228735	Kit: Duramax 180°/Duramax 180° mini torch front mounting sleeve
4. 228736	Kit: Duramax 180°/Duramax 180° mini torch adapter ring (coupler)
5. 228716	Kit: Duramax 180°/Duramax 180° mini torch main body replacement
6. 228720	Kit: Cap-sensor switch replacement
7. 058519	O-ring
8. 075504	Pilot terminal screw
9. 228730	Kit: Duramax 180°/Duramax 180° mini torch lead replacement, 4.5 m (15')
9. 228731	Kit: Duramax 180°/Duramax 180° mini torch lead replacement, 7.6 m (25')
9. 228732	Kit: Duramax 180°/Duramax 180° mini torch lead replacement, 10.7 m (35')
9. 228733	Kit: Duramax 180°/Duramax 180° mini torch lead replacement, 15.2 m (50')
9. 228734	Kit: Duramax 180°/Duramax 180° mini torch lead replacement, 22.8 m (75')
128650	Remote start pendant for machine torch, 7.6 m (25')
128651	Remote start pendant for machine torch, 15.2 m (50')
128652	Remote start pendant for machine torch, 22.8 m (75')
223254†	Kit: 105 A Work lead with hand clamp, 7.6 m (25')

†Other work lead options available.



Duramax 180° robotic torch assemblies

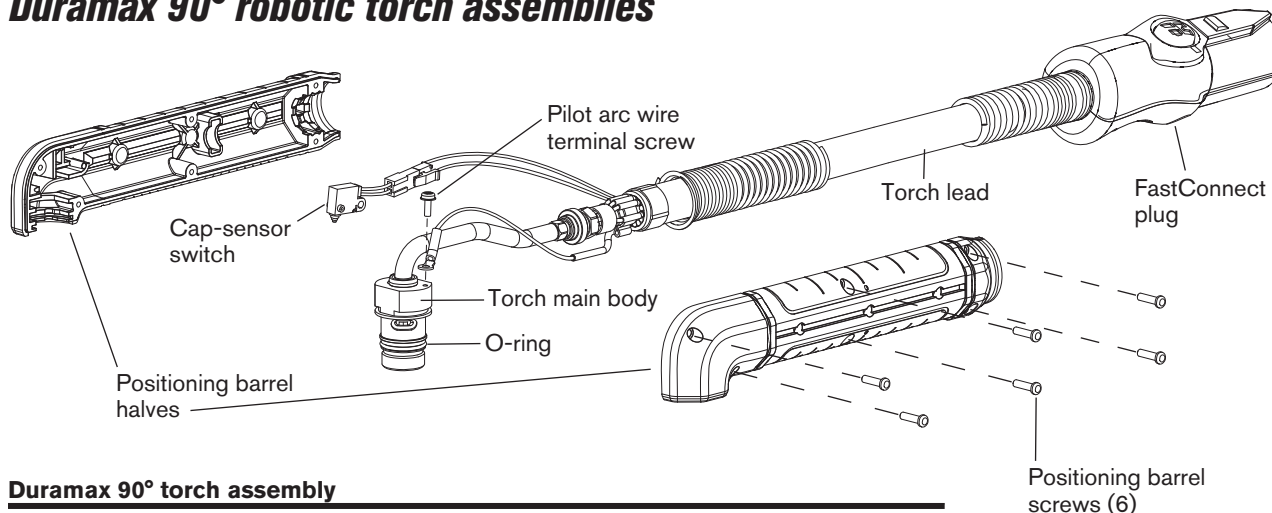


Duramax 180° torch assembly

Part number	Description
059466	180° Duramax robotic torch assembly with leads
058519	O-ring
075504	Pilot terminal screw
075714	#4 x 1/2 slotted TORX pan head screws
228109	Kit: Cap-sensor switch replacement
228314	Kit: FastConnect replacement
228852	Kit: Robotic torch lead replacement, 7.6 m (25')
228853	Kit: 180° Robotic torch main body replacement
228856	Kit: 180° Robotic torch positioning barrel replacement

Note: The entire 180° robotic torch assembly with leads can be replaced, or individual component parts can be replaced.

Duramax 90° robotic torch assemblies

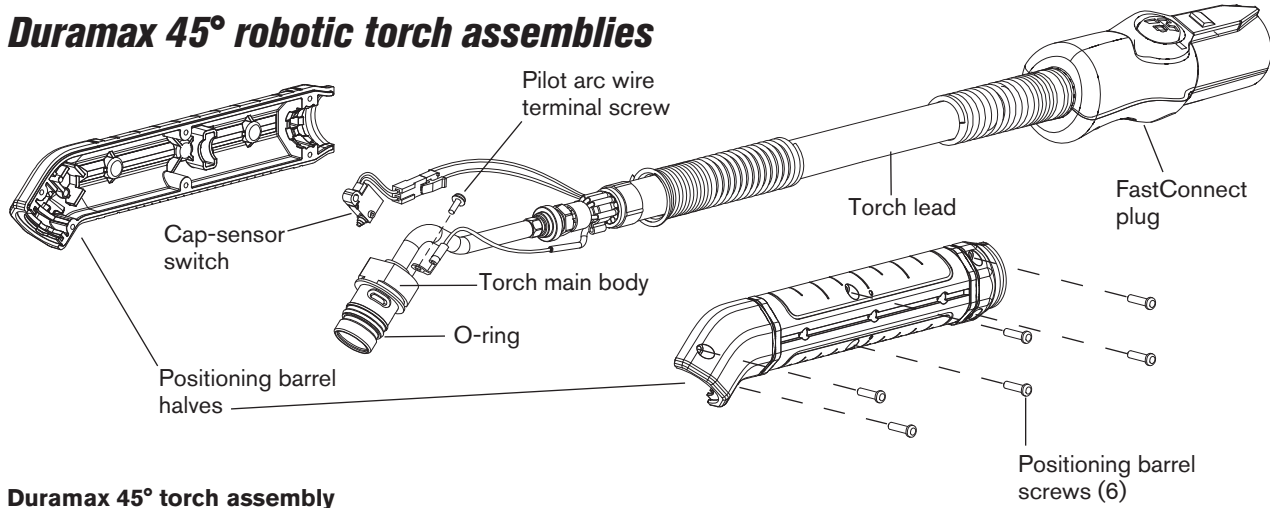


Duramax 90° torch assembly

Part number	Description
059465	90° Duramax robotic torch assembly with leads
058519	O-ring
075504	Pilot terminal screw
075714	#4 x 1/2 slotted TORX pan head screws
228109	Kit: Cap-sensor switch replacement
228314	Kit: FastConnect replacement
228852	Kit: Robotic torch lead replacement, 7.6 m (25')
228854	Kit: 90° Robotic torch main body replacement
228857	Kit: 90° Robotic torch positioning barrel replacement

Note: The entire 90° robotic torch assembly with leads can be replaced, or individual component parts can be replaced.

Duramax 45° robotic torch assemblies



Duramax 45° torch assembly

Part number	Description
059464	45° Duramax robotic torch assembly with leads
058519	O-ring
075504	Pilot terminal screw
075714	#4 x 1/2 slotted TORX pan head screws
228109	Kit: Cap-sensor switch replacement
228314	Kit: FastConnect replacement
228852	Kit: Robotic torch lead replacement, 7.6 m (25')
228855	Kit: 45° Robotic torch main body replacement
228858	Kit: 45° Robotic torch positioning barrel replacement

Note: The entire 45° robotic torch assembly with leads can be replaced, or individual component parts can be replaced.