



# 2013–2014 plasma torches and consumables





*Centricut*

|    | Product line                                    | System/Torch   |
|----|---|--|
| 1  | CENTRICUT® SE200®                               | MAX200®  |
| 2  | CENTRICUT SE2000®                               | HT2000®  |
| 3  | AMADA® IC200®                                   | IC200  |
| 4  | ESAB® PT-31/PT-31XL                             | PCM®-VPi, PCM-SMi, PCM-500i, PCM-625i, PCM-50A, PCM-875 and PCM-1125 |
| 5  | ESAB PT-20AM®                                   | PCM-100, PCM-875, PCM-1125 and ESP®-100i                             |
| 6  | ESAB PT-24                                      | Precision Plasmarc®  |
| 7  | ESAB PT-15/PT-15XL Nitrogen                     | PCM-8, ESP-300, ESP-400, ESP-600 and ESP-1000                        |
| 8  | ESAB PT-15XL Oxygen                             | PCM-8, ESP-300, ESP-400, ESP-600 and ESP-1000                        |
| 9  | ESAB PT-15/PT-15XL Nozzle components            | PCM-8, ESP-300, ESP-400, ESP-600 and ESP-1000                        |
| 10 | ESAB PT-19XL                                    | ESP-200/300/400/600C/1000, PCM-150/1500/8XL                          |
| 11 | ESAB PT-19XL+S                                  | ESP-200/300/400/600C/1000, PCM-150/1500/8XL                          |
| 12 | ESAB PT-19XLS                                   | ESP-200/300/400/600C/1000, PCM-150/1500/8XL                          |
| 14 | ESAB PT-600                                     | ESP-200/300/400/600C/1000, PCM-150/1500/8XL                          |
| 18 | <b>NEW!</b> ESAB PT-600 and PT-19XLS heavy duty | ESP-200/300/400/600c/1000, PCM-150/1500/8XL                          |
| 22 | XP3 for ESAB PT-600 and PT-19XLS                | ESP-200/300/400/600c/1000, PCM-150/1500/8XL                          |
| 26 | ESAB PT-36 (m <sup>3</sup> system)              | ESP-200/300/400/600C/1000, EPP-200, 360                              |
| 28 | KALIBURN® FineLine™200                          | FineLine200PC and 150PC  |
| 29 | KALIBURN SR-45i®                                | SR-45i   |
| 30 | KALIBURN SR-45i Retrofit                        | SR-45i   |
| 34 | <b>NEW!</b> KALIBURN Spirit® and ProLine®       | Spirit 150a, 200a, 275a, 400a , ProLine 2150, 2200, 2260             |
| 36 | KJELLBERG® HiFocus 100®                         | PerCut 101®  |
| 37 | KJELLBERG HiFocus 130/160i                      | PerCut 160/170   |
| 39 | <b>NEW!</b> KJELLBERG HiFocus 130/160i/161i     | PerCut 210M  |
| 42 | KJELLBERG HiFocus 280i/360i/440i                | PerCut 370.1   |
| 43 | KJELLBERG HiFocus 280i/360i/440i                | PerCut 370.2   |
| 45 | <b>NEW!</b> KJELLBERG HiFocus 280i/360i/440i    | PerCut 450M  |
| 47 | KJELLBERG FineFocus 800® Plus                   | PB-S80   |
| 48 | KJELLBERG FineFocus 800, 900, PA-S70, PA-S75    | PB-S70/75/77   |
| 49 | KOIKE® Super-400 Plus                           | Super-400 Plus   |
| 50 | KOMATSU® Razor® 40 amp                          | Razor 40 amp   |
| 51 | KOMATSU Razor 90/120 amp                        | Razor 90/120 amp   |
| 52 | KOMATSU Razor 300 amp                           | Razor 300 amp  |
| 53 | THERMAL DYNAMICS PCH/M-51                       | PAK® 3XR™, 5XR™, 5XT™,6XR™, 625XR™, 750XR™, Dynapak 4Xi, 6Xi         |
| 54 | THERMAL DYNAMICS PCH/M-52                       | PAK 5XR™, 6XR™, 7XR™, 8XR™, 10XR™, 625XR™, 750XR™, 1000XR™, 1250XR™  |
| 55 | THERMAL DYNAMICS PCH/M-4B, 4BT                  | PAK 22, 10, 5  |
| 56 | THERMAL DYNAMICS PCH/M-150                      | PAK 15XC, MERLIN®  |
| 57 | THERMAL DYNAMICS Maximizer 300                  | MERLIN 3000, 6000, 6000GST   |
| 58 | WHITNEY® OW250®                                 | OW250  |
| 59 | WHITNEY IC300®                                  | IC300  |

# Technology enhancements

Hypertherm® technology and quality drive superior performance of Centricut® consumables. Cut with confidence, it's Hypertherm.



## SilverLine® electrode technology

- Slows wear
- Maximizes usage
- Extends electrode life

Through the use of solid state welding technology and optimized coolant flow, SilverLine technology slows the wear of hafnium, the material which produces the plasma arc, by more efficiently removing heat from the electrode. By maximizing the silver-hafnium interface and optimizing the geometry of the silver, Centricut SilverLine electrodes can be used 25 to 300% longer than other silver-copper and all-copper electrodes.

## CoolFlow™ nozzle technology

- Maintains orifice shape and size
- Reduces torch leaking
- Extends nozzle life and improves cut quality

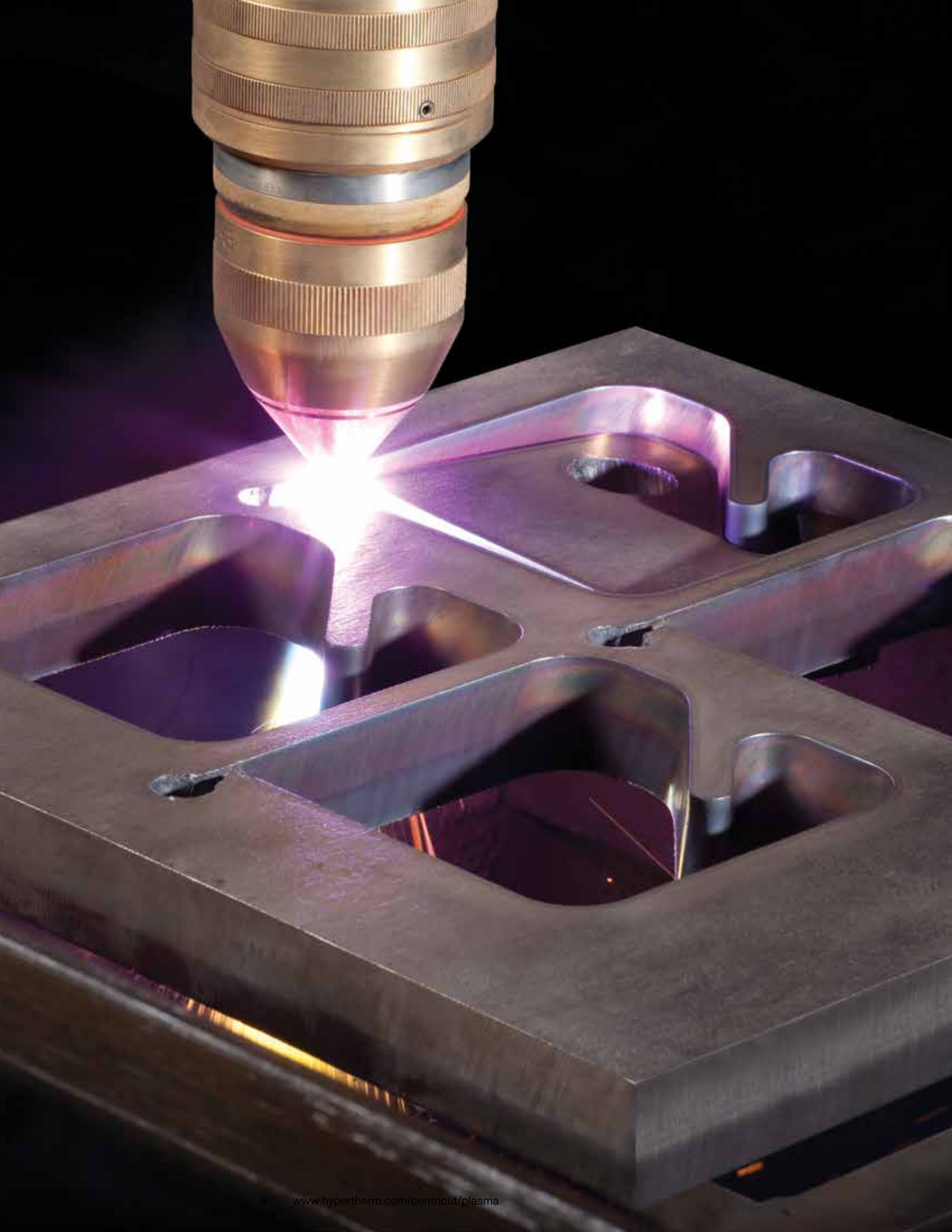
Every plasma operator will tell you that the most common nozzle failure is when the orifice goes out of round. Maintaining nozzle orifice shape and size directly impacts nozzle life and cut quality. CoolFlow technology utilizes improved cooling features and optimizes gas flows to preserve orifice size and shape longer than any other nozzle available. O-ring placement on CoolFlow nozzles reduces torch leaking which can cause consumable and torch failure.



Backed by Hypertherm technology, product quality and world-class customer support, Centricut plasma consumables deliver reliability to your process at a lower cost.

## Centricut technology advantage

| OEM                   | Torch                              | Systems                       | Technology            | Advantage                |                    |
|-----------------------|------------------------------------|-------------------------------|-----------------------|--------------------------|--------------------|
| ESAB®                 | PT-36, PT-36R                      | M3, EPP, ESP                  | SilverLine® electrode | Up to 2 times life       |                    |
|                       |                                    |                               | CoolFlow™ nozzle      | Up to 2 times life       |                    |
|                       | PT-24                              | Precision Plasmarc            | SilverLine® electrode | Up to 2 times life       |                    |
|                       | PT-15XL                            | PCM and ESP                   | SilverLine® electrode | Up to 2 times life       |                    |
|                       | PT-19XL                            | PCM and ESP                   | SilverLine® electrode | Up to 2 times life of XL |                    |
|                       | PT-19XLS                           | PCM and ESP                   | SilverLine® electrode | Up to 2 times life of XL |                    |
|                       | PT-600                             | PCM and ESP                   | SilverLine® electrode | Up to 2 times life of XL |                    |
|                       | Heavy duty for PT-600 and PT-19XLS | PCM and ESP                   | SilverLine® electrode | Up to 30% longer life    |                    |
|                       | XP3 for PT-600 and PT-19XLS        |                               | PCM and ESP           | CoolFlow™ nozzle         | Compared to UL     |
|                       |                                    |                               |                       | SilverLine® electrode    | Up to 2 times life |
| Kaliburn®             | FineLine 200                       | FineLine 150PC, 200PC         | SilverLine® electrode | Up to 2 times life       |                    |
|                       |                                    |                               | CoolFlow™ nozzle      | Improved cut quality     |                    |
|                       | ProLine                            | ProLine 2150, 2200, 2260      | SilverLine® electrode | Up to 2 times life       |                    |
|                       |                                    |                               | CoolFlow™ nozzle      | Improved cut quality     |                    |
| Spirit                | Spirit 150a, 200a, 275a, 400a      | SilverLine® electrode         | Up to 3 times life    |                          |                    |
|                       |                                    | CoolFlow™ nozzle              | Improved cut quality  |                          |                    |
| Kjellberg®            | PB-S70/75/77                       | PA-S70,S75, FineFocus 800,900 | SilverLine® electrode | Price & quality          |                    |
|                       |                                    |                               | CoolFlow™ nozzle      | Price & quality          |                    |
|                       | PerCut 101                         | HiFocus 100                   | SilverLine® electrode | Price & quality          |                    |
|                       | PerCut 160/170                     | HiFocus 130/160i              | SilverLine® electrode | Price & quality          |                    |
|                       | PB-S80                             | FineFocus 800 Plus            | SilverLine® electrode | 25% longer life          |                    |
|                       |                                    |                               | CoolFlow™ nozzle      | 25% longer life          |                    |
|                       | PerCut 370.1                       | HiFocus 280i/360i/440i        | SilverLine® electrode | Price & quality          |                    |
|                       | PerCut 370.2                       | HiFocus 280i/360i/440i        | SilverLine® electrode | 25% longer life          |                    |
|                       | PerCut 450M                        | HiFocus 280i/360i/440i        | CoolFlow™ nozzle      | 25% longer life          |                    |
| SilverLine® electrode |                                    |                               | Price & quality       |                          |                    |
|                       |                                    |                               | CoolFlow™ nozzle      | Price & quality          |                    |
|                       |                                    |                               | SilverLine® electrode | Up to 1.5 times life     |                    |
| Koike®                | Super-400 Plus                     | Super-400 Plus                | SilverLine® electrode | Up to 1.5 times life     |                    |
|                       | Razor 40                           | Razor 40                      | CoolFlow™ nozzle      | 40% life Increase        |                    |
|                       |                                    |                               | SilverLine® electrode | Up to 2 times life       |                    |
|                       | Razor 90/120                       | Razor 90/120                  | CoolFlow™ nozzle      | Up to 2 times life       |                    |
| Razor 300             | Razor 300                          | SilverLine® electrode         | Up to 2 times life    |                          |                    |



System: MAX200®

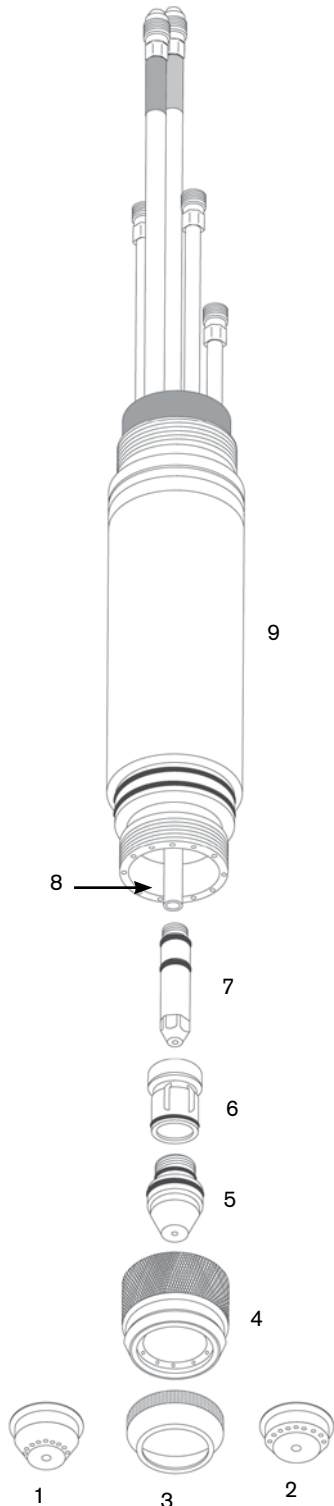
### Consumables

| Centricut part number | Reference number | Description   | Pkg qty |
|-----------------------|------------------|---|---------|
| 1                     | C61-280          | Shield, ported, dry/underwater*, 200 amp                | 1       |
| 2                     | C61-281          | Shield, ported, dry/underwater*, 100 amp                | 1       |
|                       | C61-264          | Shield ring, 1 piece, 40 amp                            | 1       |
| 3                     | C61-270          | Retaining ring, heavy duty                              | 1       |
| 4                     | C92-230          | Retaining cap   | 1       |
|                       | C61-273          | Retaining ring, HD with IHS tab                         | 1       |
| 5                     | C61-207          | Nozzle, Air/ N <sub>2</sub> /ArH <sub>2</sub> , 200 amp | 1       |
|                       | C61-263          | Nozzle, Air, 40 amp                                     | 1       |
|                       | C61-300          | Nozzle, O <sub>2</sub> , 100 amp                        | 1       |
|                       | C61-232          | Nozzle, Air, 100 amp                                    | 1       |
|                       | C61-288          | Nozzle, O <sub>2</sub> , 200 amp                        | 1       |
| 6                     | C61-227          | Gas guide, Air/ N <sub>2</sub> /ArH <sub>2</sub>        | 1       |
|                       | C61-304          | Gas guide, O <sub>2</sub> , 100 amp                     | 1       |
|                       | C61-289          | Gas guide, O <sub>2</sub> , 200 amp                     | 1       |
|                       | C61-295          | Gas guide, Air/ N <sub>2</sub> /ArH <sub>2</sub> / CCW  | 1       |
| 7                     | C61-265          | Electrode, SuperPierce, Air                             | 1       |
|                       | C61-241          | Electrode, N <sub>2</sub> , ArH <sub>2</sub>            | 1       |
|                       | C61-287          | Electrode, O <sub>2</sub> , 200 amp                     | 1       |

\*Use with C61-270

### Maintenance items

| Centricut part number | Reference number | Description                            | Pkg qty |
|-----------------------|------------------|--|---------|
|                       | C61-253          | Gas guide cleaning tool                | 1       |
| 8                     | C92-228          | Water tube                             | 1       |
|                       | C92-229          | Water tube wrench                      | 1       |
|                       | C61-099          | Wrench – electrode/nozzle              | 1       |
| 9                     | C61-213          | Torch body, with water tube and wrench | 1       |
|                       | C66-023          | Torch body o-ring                      | 5       |
|                       | C27-134          | Gas guide o-ring                       | 5       |
|                       | 027055           | Lubricant .25 oz. (7 ml) tube          | 1       |



System: HT2000®

### Consumables

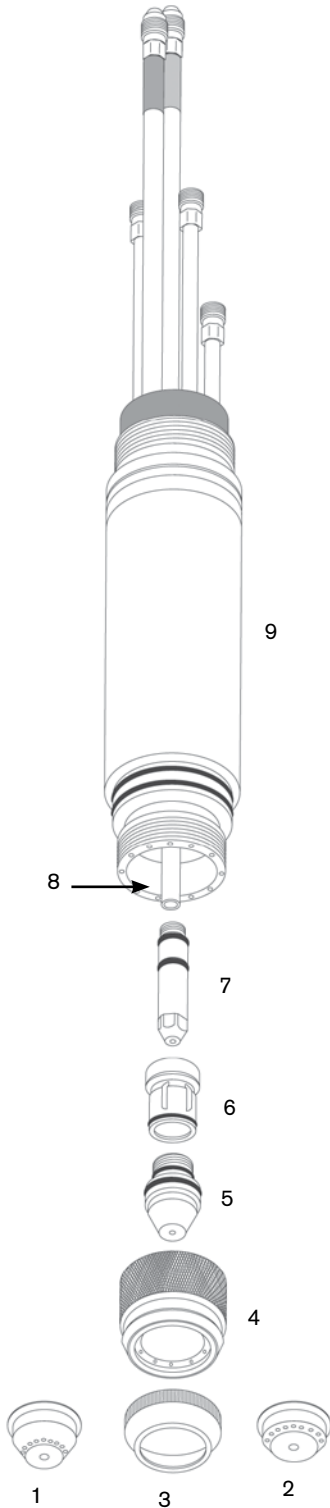
|   | Centricut part number | Reference number | Description  | Pkg qty |
|---|-----------------------|------------------|--|---------|
| 1 | C61-280               | N/A              | Shield, ported, dry/underwater*, 200 amp               | 1       |
| 2 | C61-281               | N/A              | Shield, ported, dry/underwater*, 100 amp               | 1       |
|   | C61-264               | N/A              | Shield ring, 1 piece, 40 amp                           | 1       |
| 3 | C61-270               | N/A              | Retaining ring, heavy duty                             | 1       |
| 4 | C92-230               | N/A              | Retaining cap  | 1       |
|   | C61-273               | N/A              | Retaining ring, HD with IHS tab                        | 1       |
| 5 | C61-207               | N/A              | Nozzle, Air/N <sub>2</sub> /ArH <sub>2</sub> , 200 amp | 1       |
|   | C61-263               | N/A              | Nozzle, Air, 40 amp                                    | 1       |
|   | C61-300               | N/A              | Nozzle, O <sub>2</sub> , 100 amp                       | 1       |
|   | C61-232               | N/A              | Nozzle, Air, 100 amp                                   | 1       |
|   | C61-288               | N/A              | Nozzle, O <sub>2</sub> , 200 amp                       | 1       |
| 6 | C61-227               | N/A              | Gas guide, Air/N <sub>2</sub> /ArH <sub>2</sub>        | 1       |
|   | C61-301               | N/A              | Gas guide, O <sub>2</sub> , 100 amp                    | 1       |
|   | C61-298               | N/A              | Gas guide, O <sub>2</sub> , 200 amp                    | 1       |
|   | C61-295               | N/A              | Gas guide, Air/N <sub>2</sub> /ArH <sub>2</sub> /CCW   | 1       |
| 7 | C61-265               | N/A              | Electrode, Air, 200 amp                                | 1       |
|   | C61-241               | N/A              | Electrode, N <sub>2</sub> , ArH <sub>2</sub>           | 1       |
|   | C61-287               | N/A              | Electrode, O <sub>2</sub> , 200 amp                    | 1       |

\*Use with C61-270

### Maintenance items

|   | Centricut part number | Reference number | Description                            | Pkg qty |
|---|-----------------------|------------------|--|---------|
| 8 | C92-228               | N/A              | Water tube                             | 1       |
|   | C92-229               | N/A              | Water tube wrench                      | 1       |
|   | C61-099               | N/A              | Wrench - electrode/nozzle              | 1       |
| 9 | C61-213               | N/A              | Torch body, with water tube and wrench | 1       |
|   | C66-023               | N/A              | Torch body o-ring                      | 5       |
|   | C27-134               | N/A              | Gas guide o-ring                       | 5       |
|   | C61-253               | N/A              | Gas guide cleaning tool                | 1       |
|   | 027055                | N/A              | Lubricant .25 oz. (7 ml) tube          | 1       |

\*Centricut part features a unique design that differs from the OEM design.





System: IC200®

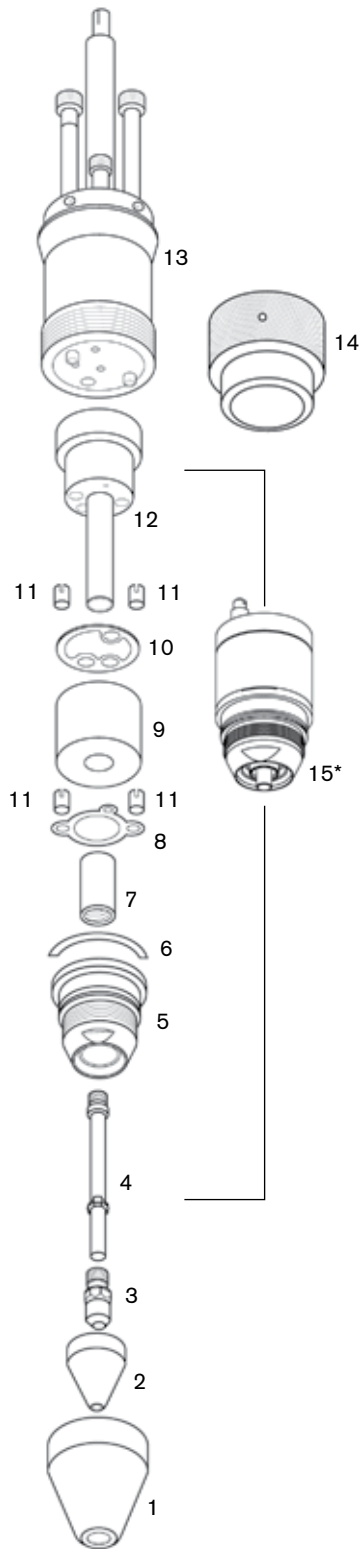
### Consumables

|   | Centricut part number | Reference number | Description                             | Pkg qty |
|---|-----------------------|------------------|---|---------|
| 1 | C14-332               | 74172324         | Nose piece                              | 1       |
| 2 | C14-330               | 74172325         | Nozzle, Air, .063, 150 amp              | 5       |
|   | C14-331-S             | 648-331          | Nozzle, Air, .098                       | 5       |
|   | C14-731               | N/A              | Nozzle, Air, .110                       | 5       |
| 3 | C14-328               | N/A              | Electrode, Air, 150 amp                 | 5       |
|   | C14-927               | 74172326         | Electrode, without o-ring, Air, 250 amp | 5       |
|   | C14-327               | 74172326         | Electrode, with o-ring, Air, 250 amp    | 5       |

### Maintenance items

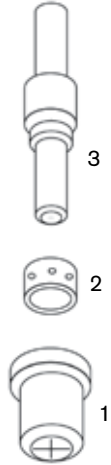
|    | Centricut part number | Reference number | Description                                     | Pkg qty |
|----|-----------------------|------------------|---|---------|
| 5  | C14-280               | 74172301         | Nozzle holder                                   | 1       |
| 6  | C14-282               | 74172303         | Gasket spacers                                  | 2       |
| 7  | C14-281               | 74172302         | Gas guide ring                                  | 1       |
| 8  | C14-286               | 74172307         | Lower gasket                                    | 5       |
| 9  | C14-959               | 74172308         | Insulating spacer                               | 1       |
| 10 | C14-288               | 74172309         | Cathode holder pkg, middle gasket               | 5       |
| 11 | C14-285               | 74172306         | Hole guides                                     | 5       |
| 12 | C14-960               | 74172310         | Manifold  | 1       |
|    | C14-283               | 74172304         | O-ring seal                                     | 5       |
|    | C14-284               | 74172305         | O-ring  | 5       |
|    | C14-010               | N/A              | O-ring  | 5       |
|    | C14-793               | 74172311         | O-ring, rear manifold                           | 4       |
| 13 | C14-964               | 74172314         | Upper body                                      | 1       |
|    | C14-866               | 649-966          | Torch tube cover                                | 1       |
| 14 | C14-961               | 74172328         | Head cover assembly                             | 1       |
|    | C14-963               | 74172313         | High frequency pin                              | 1       |
|    | C14-962               | 74172312         | High frequency socket                           | 1       |
|    | C14-765               | 649-765          | One touch torch                                 | 1       |
| 15 | C14-118*              | N/A              | Lower torch body assembly (includes items 4-12) | 1       |
|    | 027055                | N/A              | Lubricant .25 oz. (7 ml) tube                   | 1       |

\*Centricut part features a unique Hypertherm design that differs from the OEM design.



System: PCM®-VPi, PCM-SMi, PCM-500i, PCM-625i, PCM-50A, PCM-875 and PCM-1125

### Consumables



|   | Centricut part number | Reference number | Description               | Pkg qty |
|---|-----------------------|------------------|---------------------------|---------|
| 1 | C31-682               | 19682            | Tip, XL, 30 amp           | 10      |
|   | C31-866               | 18866            | Tip, 30 amp               | 5       |
|   | C31-079               | 20079            | Tip, XL, 50 amp           | 5       |
|   | L31-820               | 18820            | Tip, 50 amp               | 5       |
|   | C31-008               | 21008            | Tip, extended, 40 amp     | 10      |
| 2 | C31-861               | 20861            | Tip, extended, 50 amp     | 10      |
|   | C31-463               | 20463            | Swirl baffle, XL, 6 holes | 1       |
|   | C31-785               | 18785            | Swirl baffle, 4 holes     | 1       |
| 3 | C31-683               | 19683            | Electrode, XL             | 5       |
|   | C31-205               | 18205            | Electrode                 | 2       |
|   | C31-862               | 20862            | Electrode, extended       | 10      |
|   | L31-679               | 19679            | Seat                      | 1       |
|   | L31-282               | 20282            | Heat shield, XL           | 1       |

### Maintenance items

|  | Centricut part number | Reference number | Description                   | Pkg qty |
|--|-----------------------|------------------|-------------------------------|---------|
|  | L31-072               | 20072            | PT-31XL torch body, 75°       | 1       |
|  | 027055                | N/A              | Lubricant .25 oz. (7 ml) tube | 1       |

System: PCM®-100, PCM-875, PCM-1125 and ESP®-100i

### Consumables

|   | Centricut part number | Reference number | Description                                  | Pkg qty |
|---|-----------------------|------------------|--|---------|
| 1 | L39-447               | 21447            | Heat shield, 50 amp                          | 1       |
|   | L39-326               | 21326            | Heat shield, 70-100 amp                      | 1       |
| 2 | C39-330*              | 21330            | Nozzle, 50 amp                               | 5       |
|   | C39-329*              | 21329            | Nozzle, 70 amp                               | 5       |
|   | C39-328*              | 21328            | Nozzle, 100 amp                              | 5       |
| 3 | C39-150*              | 21150            | Electrode                                    | 5       |
| 4 | L39-373               | 21373            | Insulator                                    | 1       |
|   | L39-374               | 21374            | Baffle tube                                  | 1       |
| 5 | L39-332               | 21332            | Electrode holder assembly (includes L39-374) | 1       |
| 6 | C39-372               | 21372            | Electrode seat                               | 1       |

### Maintenance items

|   | Centricut part number | Reference number | Description  | Pkg qty |
|---|-----------------------|------------------|--|---------|
| 7 | L39-359               | 21359            | PT-20AM torch body assembly (includes L39-372 and L39-157) | 1       |
|   | L39-157               | 488157           | O-ring   | 1       |
|   | Q27055                | N/A              | Lubricant .25 oz. (7 ml) tube                              | 1       |

\*Centricut part features a unique Hypertherm design that differs from the OEM design.



System: Precision Plasmarc®

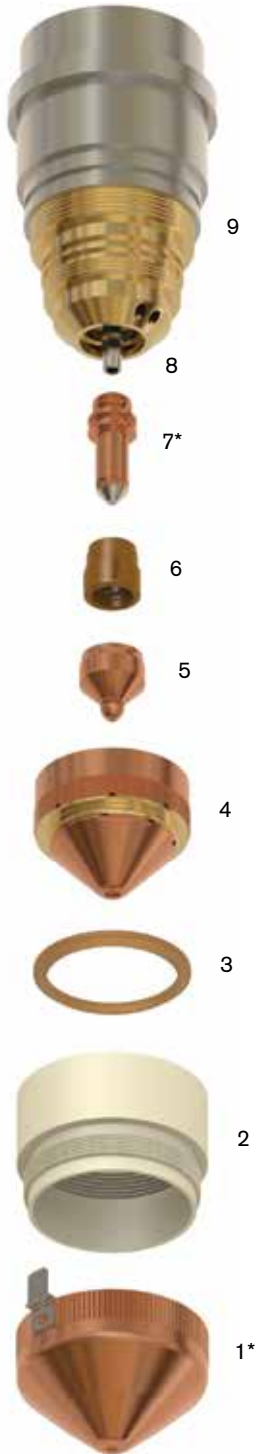
### Consumables

|   | Centricut part number | Reference number | Description                           | Pkg qty |
|---|-----------------------|------------------|---------------------------------------|---------|
| 1 | C70-531*              | 22531            | Shield, one piece with IHS tab        | 1       |
|   | C70-931               | N/A              | Shield without tab                    | 1       |
| 2 | C70-712               | 21712            | Shield retainer insulator with o-ring | 1       |
| 3 | C70-010               | 22010            | Shield cup insulator                  | 1       |
| 4 | C70-007               | 22007            | Nozzle retainer diffuser              | 1       |
| 5 | L70-540               | 21540            | Nozzle A, 15 amp                      | 1       |
|   | L70-541               | 21541            | Nozzle B, 30 amp                      | 1       |
|   | C70-542               | 21542            | Nozzle C, 50 amp                      | 5       |
|   | C70-543               | 21543            | Nozzle D, 70 amp                      | 5       |
|   | C70-923               | 21923            | Nozzle E, 100 amp                     | 5       |
| 6 | L70-852               | 21852            | Swirl baffle, 15 amp                  | 1       |
|   | L70-536               | 21536            | Swirl baffle, 30 amp                  | 1       |
|   | C70-692               | 21692            | Swirl baffle, 50 -100 amp             | 1       |
| 7 | C70-1039*             | 21539            | SilverLine® electrode                 | 1       |

### Maintenance items

|   | Centricut part number | Reference number | Description                   | Pkg qty |
|---|-----------------------|------------------|-------------------------------|---------|
|   | L70-714               | 950714           | O-ring                        | 1       |
|   | L70-797               | 638797           | O-ring                        | 5       |
|   | L70-W18               | 98W18            | O-ring                        | 5       |
|   | L70-W62               | 86W62            | O-ring                        | 1       |
| 8 | L70-725               | 21725            | Water baffle                  | 1       |
| 9 | L70-758               | 21758            | Torch body                    | 1       |
|   | 027055                | N/A              | Lubricant .25 oz. (7 ml) tube | 1       |
|   | L70-765               | 21765            | Tool, electrode and nozzle    | 1       |

\*Centricut part features a unique Hypertherm design that differs from the OEM design.



**Hypertherm technology –  
SilverLine electrodes**

System: PCM®-8, ESP®-300, ESP-400, ESP-600 and ESP-1000

## Consumables

|   | Centricut part number | Reference number | Description  | Pkg qty |
|---|-----------------------|------------------|--|---------|
|   | C10-758               | 20758            | Nozzle retaining cap, bevel, PT-15XL                     | 1       |
| 1 | C10-759               | 20759            | Nozzle retaining cap, PT-15XL                            | 1       |
|   | C10-230               | 996230           | Nozzle retaining cap, PT-15                              | 1       |
| 2 | C10-691*              | 2075691          | Nozzle assembly, N <sub>2</sub> , .125, 250 amp          | 1       |
|   | C10-611               | 2075611          | Nozzle assembly, N <sub>2</sub> , .156, 400 amp          | 1       |
|   | C10-614               | 2075614          | Nozzle assembly, N <sub>2</sub> , .156, reverse swirl    | 1       |
|   | C10-612               | 2075612          | Nozzle assembly, N <sub>2</sub> , .200, 600 amp          | 1       |
|   | C10-615               | 2075615          | Nozzle assembly, N <sub>2</sub> , .200, reverse swirl    | 1       |
|   | C10-613               | 2075613          | Nozzle assembly, N <sub>2</sub> , .230, 750 amp          | 1       |
|   | C10-690               | 2075690          | Nozzle assembly, N <sub>2</sub> , .230, reverse swirl    | 1       |
|   | L10-587               | 2075587          | Nozzle assembly, N <sub>2</sub> , .250, 875-1000 amp     | 1       |
|   | C10-317               | 37317            | Nozzle, 125 amp, PT-15XL (use with C10-142 and C10-1066) | 1       |
|   | C10-318               | N/A              | Nozzle base, 125 amp, PT-15XL                            | 1       |
|   | C10-319               | N/A              | Nozzle insulator, 125 amp, PT-15XL                       | 1       |
| 3 | C10-586               | 2075586          | Gas baffle, ceramic, 8 x .067, 260 amp                   | 1       |
|   | C10-142               | 948142           | Gas baffle, ceramic, 4 hole, 100-280 amp                 | 1       |
|   | C10-341               | 2075341          | Gas baffle, poly, 4 hole                                 | 1       |
|   | C10-360               | 2075360          | Gas baffle, poly, reverse swirl, 4 hole                  | 1       |
|   | L10-918               | 20918            | Gas baffle, 8 x .067, reverse, 260 amp                   | 1       |
| 4 | C10-236*              | 600236           | Electrode tip, N <sub>2</sub>                            | 5       |
| 6 | C10-940               | 21940            | Contact ring assembly                                    | 1       |

## Maintenance items

|   | Centricut part number | Reference number | Description                          | Pkg qty |
|---|-----------------------|------------------|--------------------------------------|---------|
| 5 | C10-343               | 2075343          | Electrode tip holder, N <sub>2</sub> | 1       |
|   | C10-403               | 20403            | PA bus insulator                     | 1       |
| 7 | C10-755               | 20755            | Insulator body with o-ring, PT-15XL  | 1       |
|   | C10-232               | 996232           | Insulator body with o-ring, PT-15    | 1       |
| 8 | C10-754               | 20754            | Torch body, PT-15XL                  | 1       |
|   | C10-240               | 996240           | Torch body, PT-15                    | 1       |
|   | C10-483               | 19483            | Double threaded mounting tube        | 1       |
|   | C10-932               | N/A              | O-ring kit, insulator body           | 1       |
|   | L10-588               | 2075588          | Insulator, high current nozzle       | 1       |
|   | L10-859               | 21859            | Sleeve assembly, air curtain         | 1       |
|   | L10-408               | 20408            | High frequency connector             | 1       |
|   | L47-110               | 37110            | Electrode holder - removal tool      | 1       |
|   | 027055                | N/A              | Lubricant .25 oz. (7 ml) tube        | 1       |

\*Centricut part features a unique Hypertherm design that differs from the OEM design.



System: PCM®-8, ESP®-300, ESP-400, ESP-600 and ESP-1000

## Consumables

|   | Centricut part number | Reference number | Description  | Pkg qty |
|---|-----------------------|------------------|--|---------|
| 1 | C10-758               | 20758            | Nozzle retaining cap, bevel, PT-15XL                     | 1       |
| 2 | C10-759               | 20759            | Nozzle retaining cap, PT-15XL                            | 1       |
|   | C10-262               | 21962            | Nozzle, 300 amp, bevel                                   | 1       |
|   | C10-063               | 21963            | Nozzle, 300 amp, reverse bevel                           | 1       |
|   | C10-317               | 37317            | Nozzle, 125 amp, PT-15XL (use with C10-142 and C10-1066) | 1       |
|   | C10-318               | N/A              | Nozzle base, 125 amp, PT-15XL                            | 1       |
|   | C10-661               | N/A              | Nozzle base, O <sub>2</sub> , 300 amp                    | 1       |
|   | C10-319               | N/A              | Nozzle insulator, 125 amp, PT-15XL                       | 1       |
| 3 | C10-751               | 20751            | Nozzle, O <sub>2</sub> , 260 amp                         | 1       |
|   | C10-962               | 35662            | Nozzle, O <sub>2</sub> , 300 amp                         | 1       |
|   | C10-662               | 35662            | Nozzle, O <sub>2</sub> , 300 amp (replaceable ceramic)   | 1       |
|   | C10-664               | 35664            | Nozzle, O <sub>2</sub> , 340-360 amp                     | 1       |
|   | C10-665               | 35665            | Nozzle, O <sub>2</sub> , 340-360 amp, reverse            | 1       |
|   | C10-920               | 20920            | Nozzle, O <sub>2</sub> , .099, 260 amp, reverse          | 1       |
| 4 | C10-1063*             | 20763            | SilverLine® electrode, 260 amp                           | 1       |
|   | C47-1096*             | 34086            | SilverLine electrode, 50-250 amp, bevel                  | 1       |
| 5 | C10-1066*             | 35666            | SilverLine electrode, 300-360 amp                        | 1       |
|   | C10-763*              | 20763            | Electrode, O <sub>2</sub>                                | 1       |
| 7 | C10-586               | 2075586          | Gas baffle, ceramic, 8 x .067, 260 amp                   | 1       |
|   | L10-918               | 20918            | Gas baffle, 8 x .067, reverse, 260 amp                   | 1       |
|   | C10-142               | 948142           | Gas baffle, 4 x .032, 50-200 amp                         | 1       |
|   | L47-143               | 948143           | Gas baffle, 4 x .032, rev, 50-200 amp                    | 1       |
|   | C10-660               | 35660            | Gas baffle, 8 hole, standard, 300-600 amp                | 1       |
|   | C122-530R             | 0558002530R      | Gas baffle, 8 X .047, rev, 250-600 amp                   | 1       |

## Maintenance items

|    | Centricut part number | Reference number | Description                              | Pkg qty |
|----|-----------------------|------------------|--|---------|
| 6  | C10-398               | 20398            | Electrode holder, O <sub>2</sub>         | 1       |
|    | C47-084               | 34084            | Electrode holder, bevel                  | 1       |
|    | C10-403               | 20403            | PA bus insulator                         | 1       |
| 8  | C10-940               | 21940            | Contact ring assembly                    | 1       |
| 9  | C10-755               | 20755            | Insulator body with o-ring kit           | 1       |
|    | C10-242               | 996242           | Locating pin                             | 1       |
| 10 | C10-754               | 20754            | Torch body                               | 1       |
|    | C10-483               | 19483            | Double threaded mounting tube            | 1       |
|    | C10-932               | N/A              | O-ring kit, insulator body               | 1       |
|    | L10-630               | 999630           | Electrode holder removal tool            | 1       |
|    | C10-W99               | 86W99            | O-ring, electrode holder                 | 5       |
|    | C10-W85               | 86W85            | O-ring, insulator body, center           | 5       |
|    | C10-526               | 996526           | O-ring, insulator body, small            | 5       |
|    | C10-527               | 996527           | O-ring, inside insulator body, front     | 5       |
|    | C10-528               | 996528           | O-ring, outside insulator body and torch | 5       |
|    | C10-106               | 2064106          | O-ring, insulator body, rear edge, red   | 5       |
|    | L10-082               | 21082            | Pilot arc bus wire                       | 1       |
|    | L10-408               | 20408            | High frequency connector                 | 1       |
|    | L47-551               | 21551            | Air curtain sleeve                       | 1       |
|    | L47-110               | 37110            | Electrode holder - removal tool          | 1       |
|    | L10-568               | 996568           | Electrode nut driver                     | 1       |
|    | L10-4775              | 34775            | Power cable, 4.5 ft.                     | 1       |
|    | 027055                | N/A              | Lubricant .25 oz. (7 ml) tube            | 1       |

\*Centricut part features a unique Hypertherm design that differs from the OEM design.



**Hypertherm technology –  
SilverLine electrodes**

System: PCM®-8, ESP®-300, ESP-400, ESP-600 and ESP-1000

## Consumables

|   | Centricut part number | Reference number | Description                | Pkg qty |
|---|-----------------------|------------------|----------------------------|---------|
| 1 | C10-628               | 996628           | Gasket                     | 5       |
| 2 | C10-693               | 2075693          | Insulator, .140            | 5       |
|   | C10-617               | 2075617          | Insulator, .180            | 5       |
|   | C10-606               | 2075606          | Insulator, .225            | 5       |
|   | C10-607               | 2075607          | Insulator, .260            | 5       |
| 3 | C10-619               | 996619           | Spacer                     | 5       |
| 4 | C10-618               | 996618           | Centering sleeve           | 5       |
| 5 | C10-584               | 2075584          | Water swirl ring, standard | 5       |
|   | C10-616               | 2075616          | Water swirl ring, reverse  | 5       |
| 6 | C10-694               | 2075694          | Nozzle base, .125          | 5       |
|   | C10-608               | 2075608          | Nozzle base, .156          | 5       |
|   | C10-609               | 2075609          | Nozzle base, .200          | 5       |
|   | C10-610               | 2075610          | Nozzle base, .230          | 5       |



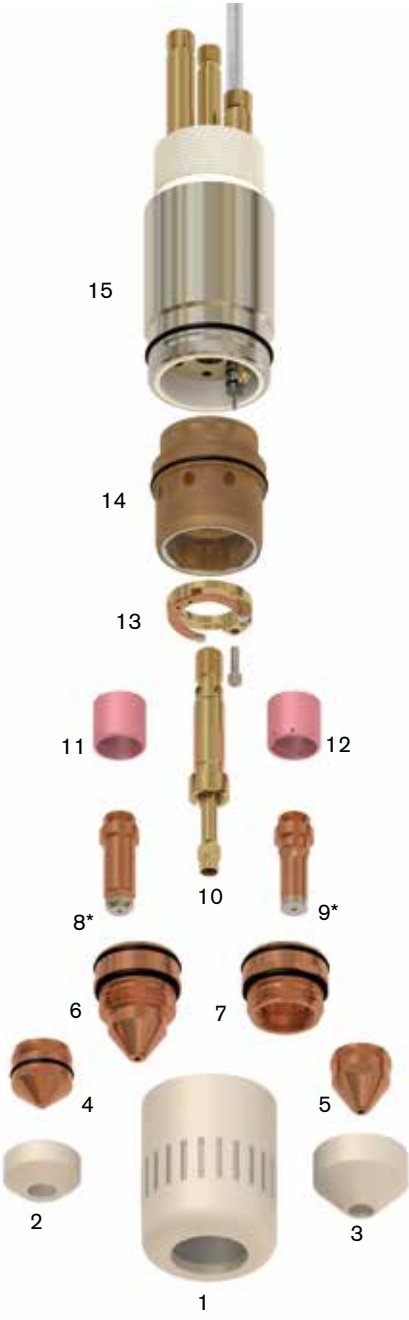
System: ESP®-200/300/400/600C/1000, PCM®-150/1500/8XL

### Consumables

|    | Centricut part number | Reference number | Description                                     | Pkg qty |
|----|-----------------------|------------------|---|---------|
| 1  | L47-085               | 34085            | Nozzle retaining cap                            | 1       |
|    | C47-082               | 37082            | Nozzle retaining cap                            | 1       |
| 2  | L47-885               | 34885            | Heat shield, 50 amp                             | 1       |
|    | C47-186               | 948186           | Heat shield, std, 100-360 amp                   | 1       |
| 3  | L47-506               | 19506            | Heat shield, heavy duty, 100-360 amp            | 1       |
|    | C47-026               | 22026            | Nozzle tip, .041, 50 amp                        | 1       |
| 4  | C47-029               | 22029            | Nozzle tip, .071, 100 amp                       | 1       |
|    | C47-030               | 22030            | Nozzle tip, .082, 150 amp                       | 1       |
| 5  | C47-031               | 22031            | Nozzle tip, .091, 200 amp                       | 1       |
|    | C47-922               | 22032            | Nozzle tip, 250 amp                             | 1       |
| 6  | C47-985               | 22034            | Nozzle tip, 360 amp                             | 1       |
|    | C47-995               | 22033            | Nozzle tip, 400 amp                             | 1       |
| 6  | C47-822               | 21822            | Nozzle, .099, 250 amp                           | 1       |
|    | C47-885               | 35885            | Nozzle, .120, 360 amp                           | 1       |
| 7  | C47-195               | 22195            | Nozzle, .130, 400 amp                           | 1       |
|    | C47-027               | 22027            | Nozzle base, 50 amp                             | 1       |
| 7  | C47-028               | 22028            | Nozzle base, 100-400 amp                        | 1       |
|    | C47-1096*             | 34086            | SilverLine® electrode, 250 amp                  | 1       |
| 8  | C47-1086*             | 35886            | SilverLine electrode, 360 amp                   | 1       |
|    | C47-996               | 34086            | Electrode, CopperLine®, 250 amp                 | 1       |
| 10 | C47-084               | 34084            | Electrode holder                                | 1       |
|    | C47-142               | 948142           | Gas swirl baffle, 4 hole, standard, 100-280 amp | 1       |
| 11 | L47-143               | 948143           | Gas swirl baffle, 4 hole, reverse, 70-200 amp   | 1       |
|    | C47-586               | 2075586          | Gas swirl baffle, 8 hole, standard, 260 amp     | 1       |
| 12 | C10-660               | 35660            | Gas swirl baffle, 8 hole, standard, 300-600 amp | 1       |
|    | L10-918               | 20918            | Gas swirl baffle, 8 hole, reverse, 260 amp      | 1       |
| 13 | C47-940               | 21940            | Contact ring assembly                           | 1       |

### Maintenance items

|    | Centricut part number | Reference number | Description                              | Pkg qty |
|----|-----------------------|------------------|--|---------|
|    | C10-403               | 20403            | PA bus insulator                         | 1       |
| 14 | C47-434               | 20434            | Insulator assembly                       | 1       |
| 15 | C47-391*              | 20391            | PT-19XL torch body                       | 1       |
|    | L47-110               | 37110            | Electrode holder - removal tool          | 1       |
|    | C14-793               | 85W10            | O-ring, rear insulator                   | 3       |
|    | C10-W99               | 86W99            | O-ring, electrode holder                 | 5       |
|    | C47-528               | 996528           | O-ring, outside insulator body and torch | 5       |
|    | C47-999               | N/A              | O-ring kit, insulator body               | 1       |
|    | C10-106               | 2064106          | O-ring, insulator body rear edge, red    | 5       |
|    | C47-W85               | 86W85            | O-ring, insulator body center            | 5       |
|    | C47-526               | 996526           | O-ring, insulator body small             | 5       |
|    | C47-527               | 996527           | O-ring, inside insulator body            | 5       |
|    | C10-483               | 19483            | Double threaded mounting tube            | 1       |
|    | L47-551               | 21551            | Air curtain sleeve                       | 1       |
|    | L10-408               | 20408            | High frequency connector                 | 1       |
|    | L10-4775              | 34775            | Power cable, 4.5 ft.                     | 1       |
|    | L10-568               | 996568           | Electrode removal tool                   | 1       |
|    | C47-006               | 181W89           | O-ring, nozzle                           | 5       |
|    | 027055                | N/A              | Lubricant .25 oz. (7 ml) tube            | 1       |



**Hypertherm technology –  
SilverLine electrodes**



System: ESP®-200/300/400/600C/1000, PCM®-150/1500/8XL

### Consumables



|   | Centricut part number | Reference number | Description              | Pkg qty |
|---|-----------------------|------------------|--------------------------|---------|
| 1 | L47-801               | 21801            | Shield retainer assembly | 1       |
| 2 | L47-795               | 21795            | Shield, 50 amp           | 5       |
| 3 | C47-802               | 21802            | Shield, 100-250 amp      | 1       |
|   | C47-945               | 21945            | Shield, 300-400 amp      | 1       |
| 4 | L47-796               | 21796            | Diffuser, 50 amp         | 1       |
| 5 | C47-944               | 21944            | Diffuser, 100-600 amp    | 1       |
| 6 | L47-982               | 21982            | Nozzle retaining cup     | 1       |

\*Centricut part features a unique Hypertherm design that differs from the OEM design.

**See PT-19XL (page 10) for remaining consumables for the PT-19XL+S.**

System: ESP®-200/300/400/600C/1000, PCM®-150/1500/8XL

### Consumables

|         | Centricut part number | Reference number | Description   | Pkg qty               |   |
|---------|-----------------------|------------------|---|-----------------------|---|
| 1       | C47-081               | 37081            | Shield retainer, copper                               | 1                     |   |
|         | L122-616              | 0558004616       | Shield retainer, plastic                              | 1                     |   |
| 2       | L47-795               | 21795            | Shield, 50 amp  | 5                     |   |
| 3       | C47-802               | 21802            | Shield, 100-250 amp                                   | 1                     |   |
|         | C47-945               | 21945            | Shield, 325-600 amp                                   | 1                     |   |
| 4       | L47-796               | 21796            | Diffuser, 50 amp                                      | 1                     |   |
| 5       | C47-944               | 21944            | Diffuser, 100-600 amp                                 | 1                     |   |
|         | C47-496               | 22496            | Diffuser, 100-600 amp, reverse                        | 1                     |   |
| 6       | C47-082               | 37082            | Nozzle retaining cap                                  | 1                     |   |
|         | L47-431               | 37431            | Nozzle retaining cap, air curtain                     | 1                     |   |
| 7       | C47-027               | 22027            | Nozzle base, 50 amp                                   | 1                     |   |
| 8       | C47-028               | 22028            | Nozzle base, 100-400 amp                              | 1                     |   |
| 9       | C47-026               | 22026            | Nozzle tip, .041, 50 amp                              | 1                     |   |
| 10      | C47-029               | 22029            | Nozzle tip, .071, 100 amp                             | 1                     |   |
|         | C47-030               | 22030            | Nozzle tip, .082, 150 amp                             | 1                     |   |
|         | C47-031               | 22031            | Nozzle tip, .091, 200 amp                             | 1                     |   |
|         | C47-922               | 22032            | Nozzle tip, 250 amp                                   | 1                     |   |
|         | C47-985               | 22034            | Nozzle tip, 360 amp                                   | 1                     |   |
|         | C47-995               | 22033            | Nozzle tip, 400 amp                                   | 1                     |   |
|         | 11                    | C47-822          | 21822   | Nozzle, .099, 250 amp | 1 |
|         |                       | C47-885          | 35885   | Nozzle, .120, 360 amp | 1 |
| C47-195 |                       | 22195            | Nozzle, .130, 400 amp                                 | 1                     |   |
| L47-401 |                       | 22401            | Nozzle, 600 amp                                       | 1                     |   |
| 12      | C47-1096              | 34086            | SilverLine® electrode, 50-250 amp                     | 1                     |   |
| 13      | C47-1086              | 35886            | SilverLine electrode, 360 amp                         | 1                     |   |
|         | C47-996               | 34086            | Electrode, CopperLine®, 250 amp                       | 1                     |   |
|         | L47-196               | 22196            | Electrode, 400 amp                                    | 1                     |   |
|         | L47-403               | 22403            | Electrode, N <sub>2</sub> /ArH <sub>2</sub> , 600 amp | 5                     |   |



Hypertherm technology -  
SilverLine electrodes

Centricut, SilverLine and CopperLine are registered trademarks of Hypertherm, Inc. and may be registered in the United States and/or other countries. All other trademarks are the properties of their respective owners. Centricut is in no way affiliated with ESAB.

System: ESP®-200/300/400/600C/1000, PCM®-150/1500/8XL

### Maintenance items

|    | Centricut part number | Reference number | Description                                | Pkg qty |
|----|-----------------------|------------------|--|---------|
| 14 | C47-068               | 37068            | Electrode holder                           | 1       |
| 15 | C47-142               | 948142           | Gas baffle, 4 x .032, 50-200 amp           | 1       |
|    | L47-143               | 948143           | Gas baffle, 4 x .032, rev, 50-200 amp      | 1       |
| 16 | C10-660               | 35660            | Gas baffle, 8 X .047, 250-600 amp          | 1       |
|    | L47-194               | 22194            | Gas baffle, 32 X .023, 400 amp             | 1       |
|    | C122-530R             | 0558002530R      | Gas baffle, 8 x .047, reverse, 250-600 amp | 1       |
| 17 | C47-071               | 37071            | Contact ring assembly                      | 1       |
| 18 | C47-083               | 37083            | Insulator body                             | 1       |
| 19 | C47-066               | 37066            | Torch body                                 | 1       |
| 20 | C47-900               | N/A              | Insulating tube kit, PT-19XLS/PT-600       | 1       |
|    | C10-483               | 19483            | Double threaded mounting tube              | 1       |
|    | C10-033               | 951000           | O-ring, PTFE* tubes                        | 5       |
|    | C47-528               | 996528           | O-ring, outside insulator body and torch   | 5       |
|    | C10-W85               | 86W85            | O-ring, insulator body center              | 1       |
|    | C10-106               | 2064106          | O-ring, insulator body rear edge, red      | 5       |
|    | C47-998               | N/A              | O-ring kit, insulator body                 | 1       |
|    | C47-006               | 181W89           | O-ring, nozzle                             | 1       |
|    | L47-110               | 37110            | Electrode holder removal tool              | 1       |
|    | L10-408               | 20408            | High frequency connector                   | 1       |
|    | L47-063               | 37063            | Locating pin                               | 1       |
|    | L47-075               | 37075            | P.A. collet and wire assembly              | 1       |
|    | 027055                | N/A              | Lubricant .25 oz. (7 ml) tube              | 1       |

\*PolyTetraFluoroEthylene is a fluorocarbon-based polymer and is commonly abbreviated PTFE. The Teflon® brand of PTFE is manufactured only by DuPont and is not sold by Hypertherm. Hypertherm purchases other brands of PTFE from various high quality manufacturers.



System: ESP®-200/300/400/600C/1000, PCM®-150/1500/8XL®

### Consumables



|    | Centricut part number | Reference number | Description                            | Pkg qty |
|----|-----------------------|------------------|--|---------|
| 1  | C47-081               | 37081            | Shield retainer, copper                | 1       |
|    | L122-616              | 0558004616       | Shield retainer, plastic               | 1       |
| 2  | L47-795               | 21795            | Shield, 50 amp                         | 5       |
| 3  | C47-802               | 21802            | Shield, 100-250 amp                    | 1       |
|    | C47-945               | 21945            | Shield, 325-600 amp                    | 1       |
|    | L96-4678              | 0558004678       | Shield                                 | 5       |
| 4  | L47-796               | 21796            | Diffuser, 50 amp                       | 1       |
| 5  | C47-944               | 21944            | Diffuser, 100-600 amp                  | 1       |
|    | C47-496               | 22496            | Diffuser, 100-600 amp, reverse         | 1       |
| 6  | C47-082               | 37082            | Nozzle retaining cap                   | 1       |
|    | L47-431               | 37431            | Nozzle retaining cap, air curtain      | 1       |
| 7  | C47-027               | 22027            | Nozzle base, 50 amp                    | 1       |
| 8  | C47-028               | 22028            | Nozzle base, 100-400 amp               | 1       |
| 9  | C47-026               | 22026            | Nozzle tip, .041, 50 amp               | 1       |
| 10 | C47-029               | 22029            | Nozzle tip, .071, 100 amp              | 1       |
|    | C47-030               | 22030            | Nozzle tip, .082, 150 amp              | 1       |
|    | C47-031               | 22031            | Nozzle tip, .091, 200 amp              | 1       |
|    | C47-922               | 22032            | Nozzle tip, 250 amp                    | 1       |
|    | C47-985               | 22034            | Nozzle tip, 360 amp                    | 1       |
|    | C47-995               | 22033            | Nozzle tip, 400 amp                    | 1       |
|    | L96-5306              | 0558005306       | Nozzle, 70-110 amp                     | 1       |
| 11 | C47-822               | 0558001623       | Nozzle, .099, 250 amp                  | 1       |
|    | C47-885               | 0558001885       | Nozzle, .120, 360 amp                  | 1       |
|    | C47-195               | 0558001886       | Nozzle, .130, 400 amp                  | 1       |
|    | L47-401               | 0558001887       | Nozzle, 600 amp                        | 1       |
| 12 | C96-1024*             | 0558001624       | SilverLine® electrode, 250 amp         | 1       |
| 13 | C96-1016*             | 0558002516       | SilverLine electrode, 360/400 amp      | 1       |
|    | L96-2499              | 0558002499       | Electrode, N <sub>2</sub>              | 5       |
| 15 | C47-142               | 0558002533       | Gas baffle, 4 x .032, 50-200 amp       | 1       |
|    | L47-143               | 0558002534       | Gas baffle, 4 x .032, rev, 50-200 amp  | 1       |
|    | C122-530R             | 0558002530R      | Gas baffle, 8 X .047, rev, 250-600 amp | 1       |
| 16 | C10-660               | 0558001625       | Gas baffle, 8 X .047, 300-600 amp      | 1       |
|    | L47-194               | 22194            | Gas baffle, 32 X .023, 400 amp         | 1       |

**Hypertherm technology –  
SilverLine electrodes**

System: ESP®-200/300/400/600C/1000, PCM®-150/1500/8XL

### Maintenance items

|    | Centricut part number | Reference number | Description                                  | Pkg qty |
|----|-----------------------|------------------|--|---------|
| 14 | C96-621               | 0558001621       | Electrode holder                             | 1       |
| 15 | C47-142               | 0558002533       | Gas baffle, 4 x .032, 50-200 amp             | 1       |
|    | L47-143               | 0558002534       | Gas baffle, 4 x .032, rev, 50-200 amp        | 1       |
|    | C122-530R             | 0558002530R      | Gas baffle, 8 X .047, rev, 250-600 amp       | 1       |
| 16 | C10-660               | 0558001625       | Gas baffle, 8 X .047, 300-600 amp            | 1       |
|    | L47-194               | 22194            | Gas baffle, 32 X .023, 400 amp               | 1       |
|    | C47-073               | 37073            | Screw, contact ring                          | 1       |
| 17 | C47-071               | 37071            | Contact ring assembly                        | 1       |
|    | C47-528               | 996528           | O-ring, outside insulator body and torch     | 5       |
|    | C47-998               | N/A              | O-ring, kit, insulator body                  | 1       |
|    | C10-483               | 19483            | Double threaded mounting tube                | 1       |
| 18 | C47-083               | 37083            | Insulator body use with C47-066              | 1       |
| 19 | C47-066               | 37066            | Torch body                                   | 1       |
|    | C96-925               | 0558001825       | Torch body assembly, modular, with insulator | 1       |
| 20 | C47-900               | N/A              | Insulating tube kit, PT-19XLS/PT-600         | 1       |
|    | L96-4611              | 0558004611       | Electrode holder tool                        | 1       |
|    | L10-4775              | 34775            | Power cable, 4.5 ft.                         | 1       |
|    | 027055                | N/A              | Lubricant .25 oz. (7 ml) tube                | 1       |

\*Centricut part features a unique Hypertherm design that differs from the OEM design.



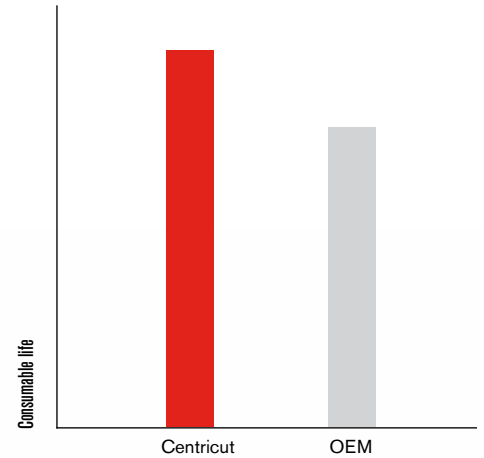


# Enhanced performance for ESAB PT-600® and PT-19XLS®

Centricut heavy duty consumables for ESAB torches deliver superior consumable life for all cutting processes and provide excellent cut quality and cut speed.

- Up to 30% longer consumable life compared to ESAB UL electrode
- Cutting speed and cut quality equal to ESAB
- Full product line covers all cutting amperages and processes – including 200A EPP
- High-quality parts – set to set consistency

Consumable life as measured in customer applications

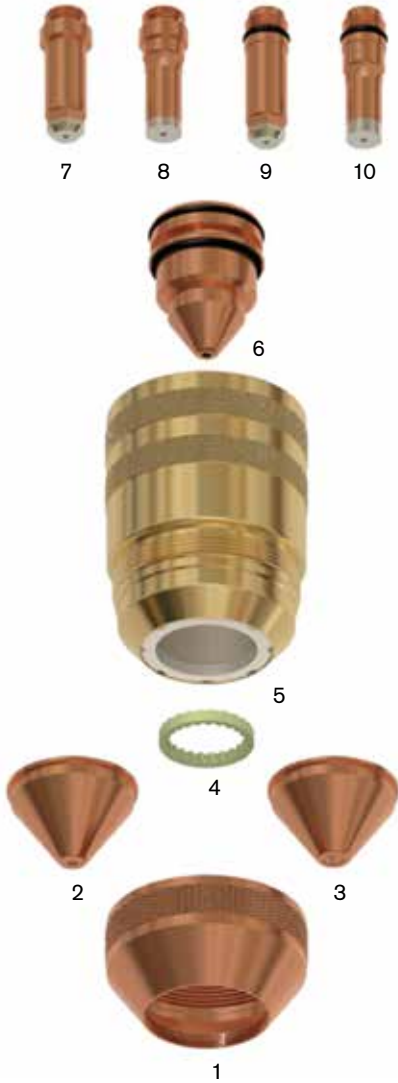


High performing consumables for ESAB PT-600 and PT-19XLS torches.

System: ESP®-200/300/400/600C/1000, PCM®-150/1500/8XL

## Consumables

| Centricut part number | Reference numbers |            |            | Description | Pkg qty                                      |   |
|-----------------------|-------------------|------------|------------|-------------|--|---|
|                       |                   |            |            |             |  |   |
| 1                     | C47-081           | 37081      | N/A        | N/A         | Shield retainer, copper                      | 1 |
|                       | L122-616          | N/A        | 0558004616 | N/A         | Shield retainer, plastic                     | 1 |
| 2                     | C122-130          | 21795      | N/A        | 0004470027  | Shield, 3.0 mm, 35-50 amp                    | 1 |
|                       | C122-141          | N/A        | 0558004678 | N/A         | Shield, 4.1 mm, 200 amp (PT-600 EPP Process) | 1 |
| 3                     | C122-166          | 21802      | N/A        | 0004470028  | Shield, 6.6 mm, 100-250 amp                  | 1 |
|                       | C122-199          | 21945      | N/A        | 0004470029  | Shield, 9.9 mm, 325-600 amp                  | 1 |
|                       | L47-796           | 21796      | N/A        | 0004470030  | Diffuser, 50 amp                             | 1 |
| 4                     | C47-944           | 21944      | N/A        | 0004470031  | Diffuser, 100-600 amp                        | 1 |
|                       | C47-496           | 22496      | N/A        | 0004470115  | Diffuser, reverse, 100-600 amp               | 1 |
| 5                     | C47-082           | 37082      | N/A        | 0004470045  | Nozzle retaining cap                         | 1 |
| 6                     | C122-6010         | N/A        | 0558001881 | N/A         | CoolFlow™ nozzle, 1.0 mm, 50 amp             | 1 |
|                       | C122-018          | N/A        | 0558001882 | N/A         | CoolFlow nozzle, 1.8 mm, 100 amp             | 1 |
|                       | C122-020          | N/A        | 0558001883 | N/A         | CoolFlow nozzle, 2.0 mm, 150-200 amp         | 1 |
|                       | C122-023          | N/A        | 0558001884 | N/A         | CoolFlow nozzle, 2.3 mm, 200 amp             | 1 |
|                       | C122-025          | 21822      | 0558001623 | N/A         | CoolFlow nozzle, 2.5 mm, 250 amp             | 1 |
|                       | C122-030          | 35885      | 0558001885 | N/A         | CoolFlow nozzle, 3.0 mm, 360 amp             | 1 |
|                       | C122-036          | 22195      | 0558001886 | N/A         | CoolFlow nozzle, 3.6 mm, 400 amp             | 1 |
|                       | C122-041          | 22401      | 0558001887 | N/A         | CoolFlow nozzle, 4.1 mm, 600 amp             | 1 |
| 7                     | C47-1096          | 34086      | 0558004458 | 0004485684  | SilverLine® electrode, 50-250 amp, PT-19XLS  | 1 |
| 8                     | C47-1086          | 35886      | 0558004460 | 0004485829  | SilverLine electrode, 360 amp, PT-19XLS      | 1 |
| 9                     | C96-1024          | 0558004461 | 0558001624 | N/A         | SilverLine electrode, 250 amp, PT-600        | 1 |
| 10                    | C96-1016          | 0558004462 | 0558002516 | N/A         | SilverLine electrode, 360/400 amp, PT-600    | 1 |



### Hypertherm technology -

SilverLine electrodes  
and CoolFlow nozzles



System: ESP®-200/300/400/600C/1000, PCM®-150/1500/8XL

### Maintenance items

|    | Centricut part number | Reference number |             |            | Description                            | Pkg qty |
|----|-----------------------|------------------|-------------|------------|--|---------|
| 11 | C47-068               | 37068            | N/A         | 0004470037 | Electrode holder, PT-19XLS             | 1       |
| 12 | C96-621               | N/A              | 0558001621  | N/A        | Electrode holder, PT-600               | 1       |
| 13 | C47-142               | 948142           | 0558002533  | 0004485612 | Gas baffle, 4 x .032, 50-200 amp       | 1       |
|    | L47-143               | 948143           | 0558002534  | 0004485613 | Gas baffle, 4 x .032, rev, 50-200 amp  | 1       |
|    | C10-660               | 35660            | 0558001625  | 0004485827 | Gas baffle, 8 x .047, 250-600 amp      | 1       |
|    | C122-530R             | 35661            | 0558002530R | N/A        | Gas baffle, 8 x .047, rev, 250-600 amp | 1       |
|    | L47-194               | 22194            | 0558002532  | 0004470097 | Gas baffle, 32 x .023, 400 amp         | 1       |
| 14 | C47-071               | 37071            | 0558003858  | N/A        | Contact ring assembly                  | 1       |
|    | C47-066               | 37066            | N/A         | 0004470040 | Torch body, PT-19XLS                   | 1       |
| 15 | C96-925               | N/A              | 0558001825  | N/A        | Torch body, PT-600                     | 1       |
|    | 027055                | N/A              | N/A         | N/A        | Lubricant .25 oz. (7 ml) tube          | 1       |

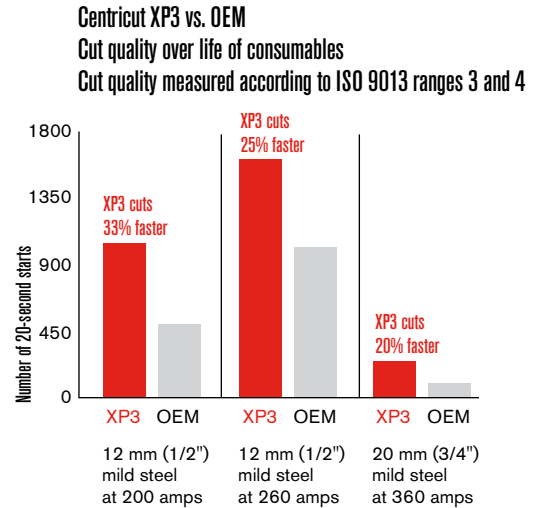




# Best performance for ESAB® PT-600® and PT-19XLS®

For optimum consumable life, cut quality and speed for your ESAB cutting process, use Centricut's best performing XP3 consumables which utilize Hypertherm's latest plasma technologies.

- On average, doubled consumable life compared to ESAB UL electrode
- 25% cutting speed increase on average
- Lower dross and better cut quality than ESAB over the life of the consumables
- High-quality parts – set to set consistency



Highest performing consumables for ESAB® PT-600® and PT-19XLS® torches.

System: ESP®-200/300/400/600C/1000, PCM®-150/1500/8XL

### Consumables

|   | Centricut part number | Reference number | Description                           | Pkg qty |
|---|-----------------------|------------------|---------------------------------------|---------|
| 1 | C47-081               | 37081            | Shield retainer, copper               | 1       |
|   | L122-616              | 0558004616       | Shield retainer, plastic              | 1       |
| 2 | C120-920*             | N/A              | MultiPort shield, 200 amp             | 1       |
|   | C120-900              | N/A              | MultiPort shield, 260 amp             | 1       |
|   | C120-936              | N/A              | MultiPort shield, 360 amp             | 1       |
| 3 | C47-944               | 21944            | Diffuser, 100-600 amp                 | 1       |
|   | C47-496               | 22496            | Diffuser, rev, 100-600 amp            |         |
| 4 | C47-082               | 37082            | Nozzle retaining cap                  | 1       |
| 5 | C120-200              | N/A              | CoolFlow™ nozzle tip, 200 amp         | 1       |
|   | C120-260              | N/A              | CoolFlow nozzle tip, 260 amp          | 1       |
|   | C120-360              | N/A              | CoolFlow nozzle tip, 360 amp          | 1       |
|   | C120-2200*            | N/A              | CoolFlow nozzle kit, 200 amp, 20 pack | 1       |
|   | C120-2260*            | N/A              | CoolFlow nozzle kit, 260 amp, 20 pack | 1       |
|   | C120-2360*            | N/A              | CoolFlow nozzle kit, 360 amp, 20 pack | 1       |
| 6 | C120-010*             | N/A              | CoolFlow nozzle base                  | 1       |
| 7 | C120-020*             | N/A              | Nozzle coolant baffle                 | 1       |
| 8 | C120-030*             | N/A              | CoolFlow nozzle base assembly         | 1       |
| 9 | C120-1010*            | N/A              | SilverLine® electrode                 | 1       |

\*Centricut part features a unique Hypertherm design that differs from the OEM design.

**Note: CoolFlow nozzle kits contain 20 CoolFlow nozzle tips and one CoolFlow nozzle base assembly.**



**Hypertherm technology –  
SilverLine electrodes and CoolFlow™  
nozzles and MultiPort shield**

System: ESP<sup>®</sup>-200/300/400/600C/1000, PCM<sup>®</sup>-150/1500/8XL

### Maintenance items

|    | Centricut part number | Reference number   | Description                       | Pkg qty |
|----|-----------------------|--------------------|-----------------------------------|---------|
| 10 | C96-621               | 0558001621         | Electrode holder                  | 1       |
| 11 | C10-660               | 0558001625, 35660  | Gas baffle, 8 X .047, 300-600 amp | 1       |
|    | C47-142               | 0558002533, 948142 | Gas baffle, 4 x .032, 50-200 amp  | 1       |
|    | C47-073               | 37073              | Screw, contact ring assembly      | 1       |
| 12 | C47-071               | 37071              | Contact ring assembly             | 1       |
|    | C47-083               | 37083              | Insulator body - use with C47-066 | 1       |
|    | C47-066               | 37066              | Torch body                        | 1       |
| 13 | C96-925               | 0558001825         | Torch body modular                | 1       |
|    | C47-006               | 181W89             | O-ring, nozzle                    | 5       |
|    | C47-998               | N/A                | O-ring, kit, insulator bod        | 1       |
|    | C120-012              | N/A                | Wrench, elec/nozzle               | 1       |
|    | C120-013              | N/A                | Wrench, nozzle base               | 1       |
|    | 027055                | N/A                | Lubricant .25 oz. (7 ml) tube     | 1       |

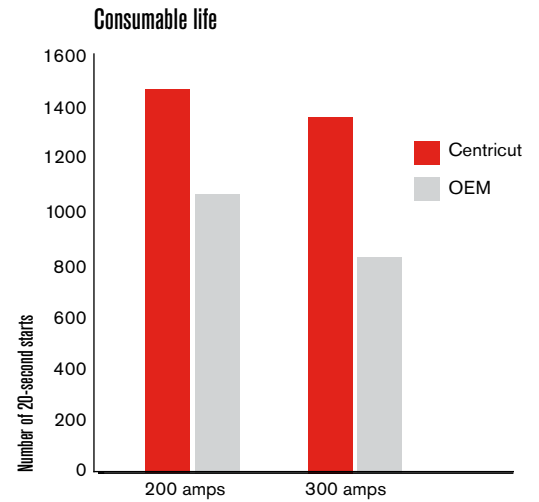




# Consumable technology for ESAB® PT-36® (m<sup>3</sup>® system)

Centricut consumables lower your cost of cutting without sacrificing quality or productivity.

- Up to double the life of ESAB consumables as tested in the lab and field
- Cutting speed and cut quality equal to ESAB
- Full product line covers all cutting amperages and metals
- High-quality parts – set to set consistency



Long life consumables from Centricut reduce the number of consumables purchased each year.

System: ESP®-200/300/400/600C/1000, EPP-200, 360

## Consumables



|   | Centricut part number | Reference number       | Description  | Pkg qty |
|---|-----------------------|------------------------|--|---------|
| 1 | C47-081               | 37081                  | Shield retainer, copper                            | 1       |
|   | L122-616              | 0558009395             | Shield retainer, plastic                           | 1       |
| 2 | C122-624              | 0558007624             | Shield, 2.4 mm, 45-55 amp                          | 1       |
|   | C122-130              | 0558006130             | Shield, 3.0 mm, 35-50 amp                          | 1       |
|   | C122-141              | 0558006141             | Shield, 4.1 mm, 100-280 amp                        | 1       |
|   | C122-166              | 0558006166             | Shield, 6.6 mm, 260-450 amp                        | 1       |
|   | C122-199              | 0558006199             | Shield, 9.9 mm, 360-600 amp                        | 1       |
|   | L47-796               | 21796                  | Diffuser, 50 amp                                   | 1       |
| 3 | C47-944               | 21944                  | Diffuser, 100-600 amp                              | 1       |
|   | C47-496               | 22496                  | Diffuser, rev, 100-600 amp                         | 1       |
| 4 | C47-082               | 37082                  | Nozzle retaining cap                               | 1       |
| 5 | C122-908              | 0558006908             | CoolFlow™ nozzle, .08 mm, 35 amp                   | 1       |
|   | C122-8010             | 0558008010             | CoolFlow nozzle, 1.0 mm, PR, 45-55 amp             | 1       |
|   | C122-6010             | 0558006010             | CoolFlow nozzle, 1.0 mm, 50 amp                    | 1       |
|   | C122-014              | 0558006014             | CoolFlow nozzle, 1.4 mm, 100 amp                   | 1       |
|   | C122-018              | 0558006018             | CoolFlow nozzle, 1.8 mm, 130 amp                   | 1       |
|   | C122-020              | 0558006020             | CoolFlow nozzle, 2.0 mm, 200 amp                   | 1       |
|   | C122-023              | 0558006023             | CoolFlow nozzle, 2.3 mm, 280 amp                   | 1       |
|   | C122-025              | 0558006025             | CoolFlow nozzle, 2.5 mm, 300 amp                   | 1       |
|   | C122-030              | 0558006030             | CoolFlow nozzle, 3.0 mm, 360 amp                   | 1       |
|   | C122-036              | 0558006036             | CoolFlow nozzle, 3.6 mm, 450 amp                   | 1       |
|   | C122-041              | 0558006041             | CoolFlow nozzle, 4.1 mm, 600 amp                   | 1       |
| 6 | C122-1059             | 0558005459, 0558003914 | SilverLine® electrode, O <sub>2</sub> , 45-130 amp | 1       |
| 7 | C122-1091             | 0558007791, 0558003914 | SilverLine electrode, O <sub>2</sub> , 200-450 amp | 1       |
| 8 | C122-1014             |                        | SilverLine electrode, O <sub>2</sub>               | 1       |
| 9 | C122-928              | 0558003928             | Electrode, SS/AL, 600 amp                          | 1       |

**Hypertherm technology –  
SilverLine electrodes  
and CoolFlow nozzles**



System: ESP®-200/300/400/600C/1000, EPP-200, 360

### Maintenance items

|    | Centricut part number | Reference number | Description                              | Pkg qty               |
|----|-----------------------|------------------|--|-----------------------|
| 10 | C122-924              | 0558003924       | Electrode holder                         | 1                     |
| 11 | C122-457              | 0558005457       | Gas baffle, 4X.022, 35-70 amp            | 1                     |
|    | C122-533              | 0558002533       | Gas baffle, 4X.032, 100-280 amp          | 1                     |
|    | C122-530R             | 0558002530R      | Gas baffle, 8X.047, reverse, 300-600 amp | 1                     |
|    | C10-660               | 0558001625       | Gas baffle, 8X.047, 300-600 amp          | 1                     |
|    | L122-3918             | 0558003918       | Electrode nut driver                     | 1                     |
|    | C47-073               | 37073            | Screw, contact ring                      | 1                     |
|    | 12                    | C47-071          | 0558003858                               | Contact ring assembly |
| 13 | C10-483               | 0558001626       | Double threaded mounting tube            | 1                     |
|    | C122-804              | 0558003804       | Torch body                               | 1                     |
|    | 027055                | N/A              | Lubricant .25 oz. (7 ml) tube            | 1                     |



System: FineLine™ 200PC and 150PC

## Consumables

|   | Centricut part number | Reference number | Description                          | Pkg qty |
|---|-----------------------|------------------|--------------------------------------|---------|
| 1 | C104-210              | 200210           | Outer cap                            | 1       |
| 2 | I104-230              | 200230           | Shield cap, 30 amp, MS/AL            | 1       |
|   | I104-233              | 200233           | Shield cap, 30 amp, SS               | 1       |
|   | I104-237              | 200237           | Shield cap, 50 amp, SS               | 1       |
|   | C104-231              | 200231           | Shield cap, 50-70 amp, MS/SS/AL      | 1       |
|   | C104-232              | 200232           | Shield cap, 100 amp, MS/SS/AL        | 1       |
|   | C104-234              | 200234           | Shield cap, 200 amp, MS/SS/AL        | 1       |
| 3 | C104-217              | 200217           | Retaining cap, 30/50/70 amp, MS      | 1       |
|   | C104-218              | 200218           | Retaining cap, 100 amp, MS           | 1       |
|   | C107-266              | 277266, 200219   | Retaining cap, 200/275 amp, MS/SS/AL | 1       |
|   | I104-222              | 200222           | Nozzle, 30 amp, MS/AL                | 1       |
|   | I104-228              | 200228           | Nozzle, 30 amp, SS                   | 1       |
|   | I104-229              | 200229           | Nozzle, 50 amp, SS                   | 1       |
| 4 | C104-223              | 200223           | Nozzle, 50 amp, MS/AL                | 1       |
|   | C104-224              | 200224           | Nozzle, 70 amp, MS                   | 1       |
|   | I104-240              | 200240           | Nozzle, 70 amp, AL/SS                | 1       |
|   | C104-225              | 200225           | Nozzle, 100 amp, MS                  | 1       |
|   | C104-239              | 200239           | Nozzle, 100 amp, AL/SS               | 1       |
|   | C104-227              | 200227           | Nozzle, 200 amp, MS/SS/AL            | 1       |
| 5 | I104-0274             | 200274           | Nozzle, 200 amp, SS                  | 1       |
|   | I104-279              | 200279           | Swirl ring, 30 amp, SS               | 1       |
|   | C104-277              | 200277           | Swirl ring, 100 amp, MS              | 1       |
| 6 | C104-221              | 200221           | Swirl ring, 200 amp, MS              | 1       |
|   | I104-213              | 200213           | Electrode, 30 amp, MS/AL             | 1       |
|   | I104-238              | 200238           | Electrode, 30-50 amp, SS             | 1       |
| 7 | C104-214              | 200214           | Electrode, 50-70 amp, MS             | 1       |
|   | C104-1005             | 200215           | SilverLine® electrode, 100 amp, MS   | 1       |
|   | C104-215              | 200215           | Electrode, 100 amp, MS               | 1       |
|   | C104-115              | 202115           | Electrode, 200 amp, MS               | 1       |
| 8 | I104-111              | 202111           | Electrode, 200 amp, SS               | 1       |
|   | C104-1015             | 202115           | SilverLine electrode, 200 amp, MS    | 1       |

## Maintenance items

|    | Centricut part number | Reference number | Description                   | Pkg qty |
|----|-----------------------|------------------|-------------------------------|---------|
| 10 | C104-112              | 200112           | Cooling tube                  | 1       |
|    | C104-109              | 200109           | Wrench, cooling tube          | 1       |
| 11 | I104-390              | 200390           | Nozzle removal tool           | 1       |
|    | C104-017              | N/A              | O-ring                        | 5       |
|    | I104-024              | 500024           | O-ring                        | 1       |
|    | I104-018              | 500018           | O-ring                        | 1       |
|    | I104-209              | 820209           | O-ring                        | 1       |
|    | I104-200              | 200000           | Torch body                    | 1       |
|    | 027055                | N/A              | Lubricant .25 oz. (7 ml) tube | 1       |

If the FineLine torch has been upgraded to Spirit, see pages 33 to 35 for consumables.

**Hypertherm technology –  
SilverLine electrodes**

System: SR-45i®

### Consumables

|   | Centricut part number | Reference number | Description        | Pkg qty |
|---|-----------------------|------------------|--------------------|---------|
| 1 | I36-098               | 770098           | Retaining cap      | 1       |
| 2 | C36-030               | 770030           | Nozzle, insulation | 5       |
| 3 | C36-104               | 770104           | Nozzle, tapered    | 5       |
| 4 | C36-000               | 770000           | Nozzle, Air        | 5       |
| 5 | C36-012               | 770012           | Swirl ring         | 1       |
| 6 | C36-715*              | 770015/ 770017   | Electrode, Air     | 5       |

### Maintenance Items

|   | Centricut part number | Reference number | Description                   | Pkg qty |
|---|-----------------------|------------------|-------------------------------|---------|
| 7 | I36-073               | 770073           | Torch body                    | 1       |
|   | 136-072               | 770072           | O-ring                        | 5       |
|   | 027055                | N/A              | Lubricant .25 oz. (7 ml) tube | 1       |

\*Centricut part features a unique Hypertherm design that differs from the OEM design.



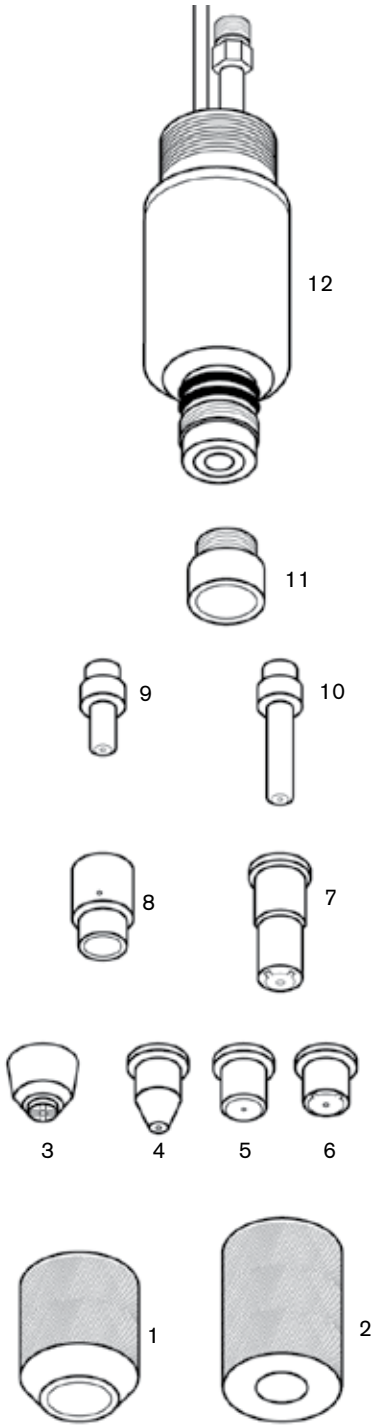
System: SR-45i®

### Consumables

|    | Centricut part number | Reference number | Description                    | Pkg qty |
|----|-----------------------|------------------|--------------------------------|---------|
| 1  | 020200                | 020200           | Retaining cap, high visibility | 1       |
| 2  | C02-104               | 020104           | Retaining cap                  | 1       |
| 3  | 020197                | 020197           | Nozzle, high visibility        | 5       |
| 4  | C02-102               | 020102           | Nozzle                         | 10      |
| 5  | C02-131               | 020131           | Nozzle, pipe                   | 10      |
| 6  | C02-115               | 020115           | Nozzle                         | 10      |
| 7  | 020466                | 020466           | Nozzle, extended               | 5       |
|    | 020340                | 020340           | Nozzle, gouging                | 5       |
| 8  | C02-101               | 020101           | Swirl ring                     | 2       |
| 9  | C02-103               | 020103           | Electrode, Air                 | 10      |
|    | 020167                | 020167           | Electrode, N <sub>2</sub>      | 5       |
| 10 | 020467                | 020467           | Electrode, Air, extended       | 5       |

### Maintenance items

|    | Centricut part number | Reference number | Description                   | Pkg qty |
|----|-----------------------|------------------|-------------------------------|---------|
|    | C02-016               | 044016           | O-ring                        | 5       |
| 11 | C02-043               | N/A              | Insulator, replaceable        | 1       |
| 12 | C36-973               | N/A              | Retrofit modular torch body   | 1       |
|    | 027055                | N/A              | Lubricant .25 oz. (7 ml) tube | 1       |





Centricut also manufactures the broadest line of CO<sub>2</sub> laser consumables available on the market



To learn more about Centricut's full line of CO<sub>2</sub> laser consumables, visit: [www.hypertherm.com/centricut](http://www.hypertherm.com/centricut)

Centricut CO<sub>2</sub> laser consumables deliver equal performance to the laser OEM, the quality you have come to expect from Hypertherm and a competitive Centricut price.

***Hypertherm***<sup>®</sup>  
***Cut with confidence***<sup>®</sup>

PLASMA | LASER | WATER JET | AUTOMATION | SOFTWARE | CONSUMABLES

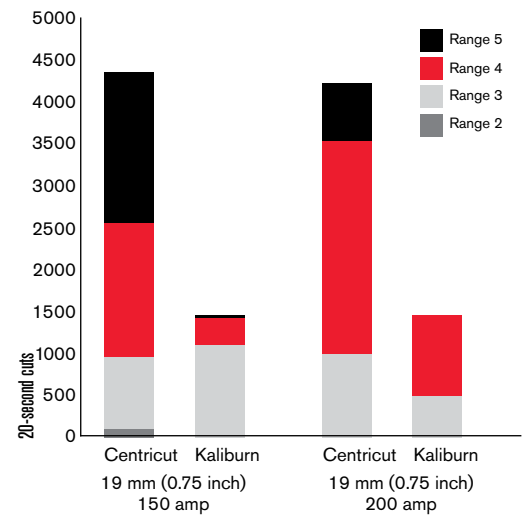


# Superior performance for Kaliburn® Spirit® and ProLine® systems

Centricut torches and consumables lower your cost of cutting, improve cut quality, increase productivity and ensure process reliability.

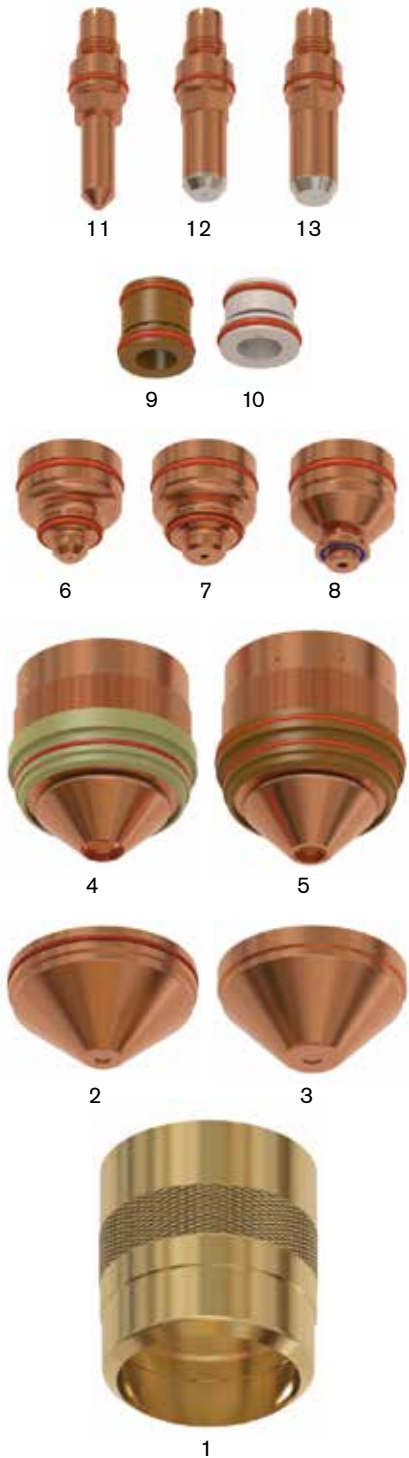
- Two to three times longer consumable life with improved cut quality up to 275 A
- 50% longer consumable life cutting at 400 A
- Improved swirl ring design is more robust than Kaliburn
- High-quality parts – set to set consistency
- Centricut quick disconnect torch gives fast job changeover and easy consumables change
- Superior performance at a lower price for your Kaliburn Spirit and ProLine systems

Consumable life with ISO 9013.2002 (E) cut quality ranges noted



System: Spirit 150a, 200a, 275a, 400a, ProLine 2150, 2200, 2260

## Consumables



|            | Centricut part number | Reference number                        | Description                             | Pkg qty  |   |
|------------|-----------------------|---|---|--|---|
| 1          | C107-154              | 277154                                  | Outer cap, 30-275 amp                   | 1  |   |
|            | C107-050              | 284150                                  | Outer cap, 400 amp                      | 1  |   |
| 2          | C107-145              | 277145                                  | Shield cap, 30 amp, MS/AL               | 1  |   |
|            | C107-144              | 277144                                  | Shield cap, 30 amp, SS, Air             | 1  |   |
|            | C107-115              | 277115                                  | Shield cap, 50 amp, MS                  | 1  |   |
|            | C107-149              | 277149                                  | Shield cap, 50 amp, SS, Air             | 1  |   |
|            | C107-150              | 277150                                  | Shield cap, 70 amp, MS/SS/AL            | 1  |   |
|            | C107-286              | 277286                                  | Shield cap, 100 amp, MS/SS/AL, Air      | 1  |   |
|            | C107-117              | 277117                                  | Shield cap, 150 amp, MS/SS/AL           | 1  |   |
|            | C107-274              | 277274                                  | Shield cap, 200 amp, MS/SS/AL           | 1  |   |
|            | C107-263              | 277263                                  | Shield cap, 275 amp, MS/SS/AL           | 1  |   |
|            | 3                     | C107-123                                | 284123                                  | Shield cap, 400 amp, MS                              | 1 |
| C107-153   |                       | 277153                                  | Retaining cap, 30/50/070 amp, MS/SS/AL  | 1  |   |
| 4          | C107-110              | 277110                                  | Retaining cap, 30/150 amp SS, Air       | 1  |   |
|            | C107-151              | 277151                                  | Retaining cap, 100/150 amp, MS/SS/AL    | 1  |   |
|            | C107-152              | 277152                                  | Retaining cap, 150 amp, MS/SS/AL        | 1  |   |
|            | I107-113              | 277113                                  | Retaining cap, 200 amp SS, H17          | 1  |   |
|            | C107-266              | 277266                                  | Retaining cap, 200/275 amp, MS/SS/AL    | 1  |   |
|            | C107-121              | 284121                                  | Retaining cap, 400 amp, MS              | 1  |   |
| 6          | C107-120*             | 277120                                  | CoolFlow™ nozzle, 30 amp, MS/AL         | 1  |   |
|            | C107-021*             | 277121                                  | CoolFlow nozzle, 30 amp, SS, Air        | 1  |   |
|            | C107-122*             | 277122                                  | CoolFlow nozzle, 50 amp, MS/AL          | 1  |   |
|            | C107-023*             | 277123                                  | CoolFlow nozzle, 50 amp, SS, Air        | 1  |   |
|            | C107-125*             | 277125                                  | CoolFlow nozzle, 70 amp, MS/SS/AL       | 1  |   |
|            | C107-284*             | 277284                                  | CoolFlow nozzle, 100 amp, MS/SS/AL, Air | 1  |   |
|            | I107-126              | 277126                                  | Nozzle, 100 amp, SS, H17                | 1  |   |
|            | 7                     | C107-293*                               | 277293                                  | CoolFlow nozzle, 150 amp, MS/SS/AL, Air              | 1 |
|            |                       | C107-289*                               | 277289                                  | CoolFlow nozzle, 200 amp, MS/SS/AL, Air              | 1 |
|            |                       | C107-269*                               | 277269                                  | CoolFlow nozzle, 275 amp, MS                         | 1 |
| C107-276*  |                       | 277276                                  | CoolFlow nozzle, 275 amp, SS/AL         | 1  |   |
| 8          | C107-025*             | 284125                                  | CoolFlow nozzle, 400 amp, MS            | 1  |   |
|            | 9                     | C107-140                                | 277140                                  | Swirl ring, 30/50/70 amp, MS/SS/AL, H17              | 1 |
|            |                       | C107-138                                | 277138                                  | Swirl ring, 30 amp, SS, Air                          | 1 |
|            |                       | C107-142                                | 277142                                  | Swirl ring, 50/70/100 amp                            | 1 |
|            |                       | C107-283*                               | 277283                                  | Swirl ring, 100 amp, MS/SS/AL, Air                   | 1 |
| 10         | C107-139*             | 277139                                  | Swirl ring, 150 amp, MS/SS/AL           | 1  |   |
|            | C107-143*             | 277143                                  | Swirl ring, 200 amp, MS/SS/AL           | 1  |   |
|            | C107-259*             | 277259                                  | Swirl ring, 200 amp, SS, H17            | 1  |   |
|            | C107-258*             | 277258                                  | Swirl ring, 275 amp, MS/SS/AL           | 1  |   |
|            | C107-022*             | 284122                                  | Swirl ring, 400 amp, MS/SS/AL           | 1  |   |
|            | 11                    | C107-130                                | 277130                                  | Electrode, 30 amp, MS/AL                             | 1 |
| C107-137   |                       | 277137                                  | Electrode, 30/50 amp, SS, Air           | 1  |   |
| C107-131   |                       | 277131                                  | Electrode, 50/70 amp, MS/SS/AL          | 1  |   |
| 12         |                       | C107-1082*                              | 277282                                  | SilverLine <sup>®</sup> electrode, 100 amp, MS/SS/AL | 1 |
|            |                       | I107-133                                | 277133                                  | Electrode, 100 amp, SS, H17                          | 1 |
|            |                       | C107-1092*                              | 277292                                  | SilverLine electrode, 150 amp, MS/SS/AL              | 1 |
|            |                       | I107-135                                | 277135                                  | Electrode, 150 amp, SS, H17                          | 1 |
| C107-1091* | 277291                | SilverLine electrode, 200 amp, MS/SS/AL | 1                                       |  |   |
| C107-1070* | 277270                | SilverLine electrode, 275 amp, MS/SS/AL | 1                                       |  |   |
| 13         | C107-1024*            | 284124                                  | SilverLine electrode, 400 amp, MS       | 1  |   |

\*Centricut part features a unique Hypertherm design that differs from the OEM design.

**Hypertherm technology –**  
**SilverLine electrodes**  
**and CoolFlow nozzles**



System: Spirit 150a, 200a, 275a, 400a, ProLine 2150, 2200, 2260

### Maintenance Items

|    | Centricut part number | Reference number | Description                                  | Pkg qty |
|----|-----------------------|------------------|--|---------|
|    | C23-001               | N/A              | Swirl ring removal tool (up to 275 amp only) | 1       |
|    | C107-007              | 277007           | Cooling tube                                 | 1       |
|    | C107-091              | N/A              | O-ring kit, torch head                       | 1       |
| 14 | C107-9150             | 279150           | Torch head, Spirit 150-275 amp               | 1       |
|    | C107-9100             | 279100           | Torch head, Spirit 400 amp                   | 1       |
| 15 | C107-9050             | 279050           | Torch base, Spirit 150-275 amp               | 1       |
|    | C107-9000             | 279000           | Torch base, Spirit 400 amp                   | 1       |
|    | C107-1050             | N/A              | Torch kit, Spirit 150-275 amp                | 1       |
|    | C107-1000             | N/A              | Torch kit, Spirit 400 amp                    | 1       |
|    | C107-300              | N/A              | Plasma gas tube                              | 1       |
|    | I107-056              | 277056           | Nozzle removal tool                          | 1       |
|    | I107-7087             | 277087           | Kaliburn electrode tool                      | 1       |
|    | Q27055                | N/A              | Lubricant .25 oz. (7 ml) tube                | 1       |



### C107-1050 Torch kit, Spirit 150-275 amp includes:

| Centricut part number | Description                    | Pkg qty |
|-----------------------|--------------------------------|---------|
| C107-9050             | Torch base, Spirit 150-275 amp | 1       |
| C107-9150             | Torch head, Spirit 150-275 amp | 1       |
| C107-300              | Plasma gas tube                | 1       |
| N/A                   | Insulation material            | 1       |
| 808040                | Field service bulletin         | 1       |

### C107-1000 Torch kit, Spirit 400 amp includes:

| Part number | Description                | Pkg qty |
|-------------|----------------------------|---------|
| C107-9000   | Torch base, Spirit 400 amp | 1       |
| C107-9100   | Torch head, Spirit 400 amp | 1       |
| C107-300    | Plasma gas tube            | 1       |
| N/A         | Insulation material        | 1       |
| 808040      | Field service bulletin     | 1       |

**Note:** Part numbers listed below reference ProLine parts that have been discontinued by Kaliburn. Centricut carries these parts for existing customers only. New customers with Kaliburn ProLine systems should use the Spirit consumables listed on the previous page (pg. 34). Please contact a Centricut product specialist at 1-800-752-7623 or at 1-603-298-7849 with questions on parts selection.

### Consumables

| Centricut part number | Reference number | Description                           | Pkg qty |
|-----------------------|------------------|---------------------------------------|---------|
| C107-147              | 277147           | Shield cap, 100 amp                   | 1       |
| C107-148              | 277148           | Shield cap, 200 amp, SS               | 1       |
| C107-127              | 277127           | CoolFlow™ nozzle, 100 amp, MS         | 1       |
| C107-119              | 277119           | CoolFlow nozzle, 150 amp, MS          | 1       |
| C107-268              | 277268           | CoolFlow nozzle, 200 amp, MS          | 1       |
| C107-1034             | 277134           | SilverLine® electrode, 100 amp, MS    | 1       |
| C107-1036             | 277136           | SilverLine electrode, 150/200 amp, MS | 1       |

Centricut, CoolFlow and SilverLine are registered trademarks of Hypertherm, Inc. and may be registered in the United States and/or other countries. All other trademarks are the properties of their respective owners. Centricut is in no way affiliated with Kaliburn.

Torch: PerCut 101®

### Consumables – Carbon steel



|    | Centricut part number | Reference number | Alternate reference | Description                  | Pkg qty |
|----|-----------------------|------------------|---------------------|------------------------------|---------|
| 1  | C106-081              | .11.835.201.081  | Z501                | Protection cap               | 1       |
| 2  | C106-561              | .11.835.201.1561 | Z4015               | Swirl gas cap, 1.5 mm        | 1       |
|    | C106-571              | .11.835.201.1571 | Z4020               | Swirl gas cap, 2.0 mm        | 1       |
|    | C106-581              | .11.835.201.1581 | Z4025               | Swirl gas cap, 2.5 mm        | 1       |
|    | C106-591              | .11.835.201.1591 | Z4030               | Swirl gas cap, 3.0 mm        | 1       |
|    | C106-171              | .11.835.401.1571 | Z4140               | Swirl gas cap, 4.0 mm        | 1       |
| 5  | C106-406              | .11.835.221.406  | Z2006               | Nozzle, 0.6 mm               | 10      |
|    | C106-407              | .11.835.221.407  | Z2007               | Nozzle, 0.7 mm               | 10      |
|    | C106-408              | .11.835.221.408  | Z2008               | Nozzle, 0.8 mm               | 10      |
|    | C106-409              | .11.836.221.409  | Z2009               | Nozzle, 0.9 mm               | 10      |
|    | C106-410              | .11.835.221.410  | Z2010               | Nozzle, 1.0 mm               | 10      |
|    | C106-411              | .11.835.221.411  | Z2011               | Nozzle, 1.1 mm               | 10      |
|    | C106-412              | .11.835.421.412  | Z2112               | Nozzle, 1.2 mm               | 10      |
|    | C106-112              | .11.835.221.412  | Z2012               | Nozzle, 1.2 mm               | 10      |
|    | C106-414              | .11.835.421.414  | Z2114               | Nozzle, 1.4 mm               | 10      |
| 4  | C106-160              | .11.835.201.160  | Z3004               | Nozzle cap, complete, 0.4 mm | 1       |
|    | C106-162              | .11.835.201.162  | Z3008               | Nozzle cap complete, 0.8 mm  | 1       |
| 7  | C106-153              | .11.835.221.153  | Z101                | Gas guide cap, 0.4 mm        | 1       |
| 8  | K106-253              | .11.834.321.153  | Z111                | Gas guide cap                | 1       |
| 9  | C106-303              | .11.835.421.303  | Z111A               | Spacer                       | 1       |
| 10 | C106-1021*            | .11.835.421.3101 | Z012                | SilverLine® electrode        | 1       |
|    | C106-1001*            | .11.835.221.3101 | Z002                | SilverLine electrode         | 1       |

### Consumables – Stainless steel and aluminum

|    | Centricut part number | Reference number | Alternate reference | Description                 | Pkg qty |
|----|-----------------------|------------------|---------------------|-----------------------------|---------|
| 1  | C106-081              | .11.835.201.081  | Z501                | Protection cap              | 1       |
| 3  | C106-1571             | .11.835.411.1571 | Z4520               | Swirl gas cap, 2.0 mm       | 1       |
|    | C106-1581             | .11.835.411.1581 | Z4530               | Swirl gas cap, 3.0 mm       | 1       |
|    | C106-1591             | .11.835.411.1591 | Z4540               | Swirl gas cap, 4.0 mm       | 1       |
| 4  | C106-162              | .11.835.201.162  | Z3008               | Nozzle cap complete, 0.8 mm | 1       |
| 5  | C106-406              | .11.835.221.406  | Z2006               | Nozzle, 0.6 mm              | 10      |
|    | C106-407              | .11.835.221.407  | Z2007               | Nozzle, 0.7 mm              | 10      |
|    | C106-408              | .11.835.221.408  | Z2008               | Nozzle, 0.8 mm              | 10      |
|    | C106-410              | .11.835.221.410  | Z2010               | Nozzle, 1.0 mm              | 10      |
| 6  | C106-610              | .11.835.411.610  | Z2510               | Nozzle, 1.0 mm              | 5       |
|    | C106-612              | .11.835.411.612  | Z2512               | Nozzle, 1.2 mm              | 5       |
|    | C106-614              | .11.835.411.614  | Z2514               | Nozzle, 1.4 mm              | 5       |
|    | C106-616              | .11.835.411.616  | Z2516               | Nozzle, 1.6 mm              | 5       |
| 7  | C106-153              | .11.835.221.153  | Z101                | Gas guide cap, 0.4 mm       | 1       |
| 8  | K106-253              | .11.834.321.153  | Z111                | Gas guide cap               | 1       |
| 9  | C106-303              | .11.835.421.303  | Z111A               | Spacer                      | 1       |
| 11 | C106-101              | .11.835.211.5101 | Z042                | Electrode                   | 1       |
|    | C106-5101             | .11.835.411.5101 | Z052                | Electrode                   | 1       |

**Hypertherm technology –  
SilverLine electrodes**

### Maintenance items

|  | Centricut part number | Reference number | Alternate reference | Description                   | Pkg qty |
|--|-----------------------|------------------|---------------------|-------------------------------|---------|
|  | 027055                | N/A              |                     | Lubricant .25 oz. (7 ml) tube | 1       |

\*Centricut part features a unique Hypertherm design that differs from the OEM design.

Torch: PerCut 160/170®

### Consumables – Carbon steel



|    | Centricut part number | Reference number | Alternate reference | Description                 | Pkg qty |
|----|-----------------------|------------------|---------------------|-----------------------------|---------|
| 1  | C106-081              | .11.835.201.081  | Z501                | Protection cap              | 1       |
| 2  | C106-561              | .11.835.201.1561 | Z4015               | Swirl gas cap, 1.5 mm       | 1       |
|    | C106-571              | .11.835.201.1571 | Z4020               | Swirl gas cap, 2.0 mm       | 1       |
|    | C109-551              | .11.835.201.1551 | Z4022               | Swirl gas cap, 2.2 mm       | 1       |
|    | C106-581              | .11.835.201.1581 | Z4025               | Swirl gas cap, 2.5 mm       | 1       |
|    | C106-591              | .11.835.201.1591 | Z4030               | Swirl gas cap, 3.0 mm       | 1       |
|    | C106-171              | .11.835.401.1571 | Z4140               | Swirl gas cap, 4.0 mm       | 1       |
| 4  | K109-160              | .11.842.401.160  | S3004               | Nozzle cap, 0.4 mm          | 1       |
|    | C109-162              | .11.842.401.162  | S3008               | Nozzle cap, 0.8 mm          | 1       |
|    | C109-622              | .11.842.401.1622 | S3028               | Nozzle cap, 0.8 mm          | 1       |
| 5  | C109-406              | .11.843.021.406  | S2006X              | Nozzle, 0.6 mm, 25 amp      | 10      |
|    | C109-407              | .11.843.021.407  | S2007X              | Nozzle, 0.7 mm, 35 amp      | 10      |
|    | C109-408              | .11.843.021.408  | S2008X              | Nozzle, 0.8 mm, 50/60 amp   | 10      |
|    | C109-409              | .11.843.021.409  | S2009X              | Nozzle, 0.9 mm, 70/80 amp   | 10      |
|    | C109-410              | .11.843.021.410  | S2010X              | Nozzle, 1.0 mm, 80/90 amp   | 10      |
|    | C109-411              | .11.843.021.411  | S2011X              | Nozzle, 1.1 mm, 90/100 amp  | 10      |
|    | C109-112              | .11.843.121.412  | S2112X              | Nozzle, 1.2 mm, 100 amp     | 10      |
|    | C109-412              | .11.843.021.412  | S2012X              | Nozzle, 1.2 mm, 100/130 amp | 10      |
|    | C109-414              | .11.843.021.414  | S2014X              | Nozzle, 1.4 mm, 130/160 amp | 10      |
|    | C109-114              | .11.843.121.414  | S2114X              | Nozzle, 1.4 mm, 130 amp     | 10      |
|    | C109-416              | .11.843.021.416  | S2016X              | Nozzle, 1.6 mm, 160 amp     | 10      |
|    | C109-116              | .11.843.121.416  | S2116X              | Nozzle, 1.6 mm, 160 amp     | 10      |
| 7  | C106-153              | .11.835.221.153  | Z101                | Gas guide cap, 0.4 mm       | 1       |
|    | C109-154              | .11.835.221.154  | Z102                | Gas guide cap               | 1       |
| 8  | K106-253              | .11.834.321.153  | Z111                | Gas guide cap               | 1       |
| 9  | C106-303              | .11.835.421.303  | Z111A               | Spacer                      | 1       |
| 10 | C109-1010*            | .11.843.021.310  | S002X               | SilverLine® electrode, XL   | 1       |
|    | C109-1030*            | .11.843.121.310  | S012X               | SilverLine electrode, XL    | 1       |

### Consumables – Stainless steel and aluminum

|    | Centricut part number | Reference number | Alternate reference | Description               | Pkg qty |
|----|-----------------------|------------------|---------------------|---------------------------|---------|
| 1  | C106-081              | .11.835.201.081  | Z501                | Protection cap            | 1       |
| 3  | C106-1581             | .11.835.411.1581 | Z4530               | Swirl gas cap, 3.0 mm     | 1       |
|    | C109-580              | .11.835.411.1580 | Z4535               | Swirl gas cap, 3.5 mm     | 1       |
|    | C106-1591             | .11.835.411.1591 | Z4540               | Swirl gas cap, 4.0 mm     | 1       |
|    | C109-590              | .11.835.411.1590 | Z4545               | Swirl gas cap, 4.5 mm     | 1       |
| 4  | C109-162              | .11.842.401.162  | S3008               | Nozzle cap, 0.8 mm        | 1       |
|    | C109-621              | .11.842.401.1621 | Z3018               | Nozzle cap, 0.8 mm        | 1       |
| 6  | C109-407              | .11.843.021.407  | S2007X              | Nozzle, 0.7 mm, 35 amp    | 10      |
|    | C109-408              | .11.843.021.408  | S2008X              | Nozzle, 0.8 mm, 50/60 amp | 10      |
|    | C109-614              | .11.843.111.614  | S2514X              | Nozzle, 1.4 mm, 120 amp   | 5       |
|    | C109-616              | .11.843.111.616  | S2516X              | Nozzle, 1.6 mm, 140 amp   | 5       |
|    | C109-618              | .11.843.111.618  | S2518X              | Nozzle, 1.8 mm, 160 amp   | 5       |
| 7  | C106-153              | .11.835.221.153  | Z101                | Gas guide cap, 0.4 mm     | 1       |
| 8  | K106-253              | .11.834.321.153  | Z111                | Gas guide cap             | 1       |
| 11 | C109-510              | .11.842.411.510  | S042                | Electrode                 | 1       |
|    | C109-1510             | .11.842.511.510  | S052                | Electrode                 | 1       |

### Maintenance items

|  | Centricut part number | Reference number | Alternate reference | Description                   | Pkg qty |
|--|-----------------------|------------------|---------------------|-------------------------------|---------|
|  | K109-152              | .11.842.401.152  | S901                | Cooling tube                  | 1       |
|  | O27055                | N/A              |                     | Lubricant .25 oz. (7 ml) tube | 1       |

\*Centricut part features a unique Hypertherm design that differs from the OEM design.

Centricut and SilverLine are registered trademarks of Hypertherm, Inc. and may be registered in the United States and/or other countries. All other trademarks are the properties of their respective owners. Centricut is in no way affiliated with Kjellberg.

**Hypertherm technology –**

**SilverLine electrodes**

## New consumables for Kjellberg® PerCut 210M torch

Centricut consumables lower your cost of cutting and deliver excellent cut speeds and cut quality. Fit all versions of the PerCut 210M torch.

- Equal performance to Kjellberg at a lower price
- Critical to function tolerances and precision manufacturing guarantee consistency of parts set to set
- No special system set up required and Centricut parts fit all PerCut 210M torch designs
- Consumables available for Kjellberg Contour Cut™ processes



Torch: PerCut 210M®

### Consumables – Carbon steel



|   | Centricut part number | Reference number | Alternate reference | Description                              | Pkg qty |
|---|-----------------------|------------------|---------------------|--|---------|
| 1 | C124-081              | .11.848.201.081  | G501                | Protection cap, 20–200 amp               | 1       |
| 2 | C124-520              | .11.848.201.1520 | G4020               | Swirl gas cap, 60 amp                    | 1       |
|   | C124-525              | .11.848.201.1525 | G4025               | Swirl gas cap, 90–130 amp                | 1       |
|   | C124-530              | .11.848.201.1530 | G4030               | Swirl gas cap, 90–200 amp                | 1       |
|   | C124-535              | .11.848.201.1535 | G4035               | Swirl gas cap, 200 amp, Contour Cut™     | 1       |
|   | C124-540              | .11.848.201.1540 | G4040               | Swirl gas cap, 200 amp, Contour Cut™     | 1       |
| 3 | C124-628              | .11.848.201.1628 | G3028               | Nozzle cap, 60–200 amp                   | 1       |
| 4 | C124-408*             | .11.848.221.408  | G2008Y              | CoolFlow™ nozzle, 60 amp                 | 1       |
|   | C124-410*             | .11.848.221.410  | G2010Y              | CoolFlow nozzle, 90 amp                  | 1       |
|   | C124-412*             | .11.848.221.412  | G2012Y              | CoolFlow nozzle, 130 amp                 | 1       |
|   | C124-414*             | .11.848.221.414  | G2014Y              | CoolFlow nozzle, 160 amp                 | 1       |
|   | C124-417*             | .11.848.221.417  | G2017Y              | CoolFlow nozzle, 200 amp                 | 1       |
| 5 | C124-145              | .11.848.221.145  | G101                | Gas guide, Low amperage and Contour Cut™ | 1       |
|   | C124-146              | .11.848.221.146  | G102                | Gas guide, 60–200 amp                    | 1       |
| 6 | C124-1000*            | .11.848.221.300  | G002Y               | SilverLine® electrode, 20–200 amp        | 1       |
|   | C124-142              | .11.848.201.142  | G901Y               | Cooling tube, 20–200 amp                 | 1       |

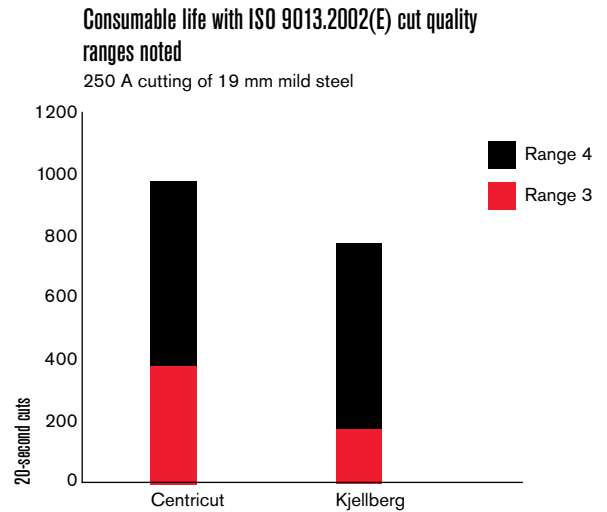
\*Centricut part features a unique Hypertherm design that differs from the OEM design.



# Enhanced consumables for Kjellebrg® PerCut 370 torches

Centricut consumables offer longer life compared to Kjellberg Yellow X-Life consumables while delivering excellent quality and productivity.

- 25% longer consumable life compared to Kjellberg Yellow XLife on mild steel
- Speed and cut quality equal to Kjellberg
- High-quality parts – set to set consistency
- Full product line including consumables for mild steel and stainless steel cutting



Mild steel and stainless steel cutting consumables for HiFocus 280i/360i/440i.

Torch: PerCut 370.1®

### Consumables – Carbon steel

|    | Centricut part number | Reference number | Alternate reference | Description                 | Pkg qty |
|----|-----------------------|------------------|---------------------|-----------------------------|---------|
| 1  | C106-081              | .11.835.201.081  | Z501                | Protection cap              | 1       |
| 2  | C106-561              | .11.835.201.1561 | Z4015               | Swirl gas cap, 1.5 mm       | 1       |
|    | C106-571              | .11.835.201.1571 | Z4020               | Swirl gas cap, 2.0 mm       | 1       |
|    | C109-551              | .11.835.201.1551 | Z4022               | Swirl gas cap, 2.2 mm       | 1       |
|    | C106-581              | .11.835.201.1581 | Z4025               | Swirl gas cap, 2.5 mm       | 1       |
|    | C106-591              | .11.835.201.1591 | Z4030               | Swirl gas cap, 3.0 mm       | 1       |
|    | C106-171              | .11.835.401.1571 | Z4140               | Swirl gas cap, 4.0 mm       | 1       |
|    | C106-1591             | .11.835.411.1591 | Z4540               | Swirl gas cap, 4.0 mm       | 1       |
| 4  | K109-160              | .11.842.401.160  | S3004               | Nozzle cap, 0.4 mm          | 1       |
|    | C109-622              | .11.842.401.1622 | S3028               | Nozzle cap, 0.8 mm          | 1       |
| 5  | C109-406              | .11.843.021.406  | S2006X              | Nozzle, 0.6 mm, 25 amp      | 10      |
|    | C109-407              | .11.843.021.407  | S2007X              | Nozzle, 0.7 mm, 35 amp      | 10      |
|    | C109-408              | .11.843.021.408  | S2008X              | Nozzle, 0.8 mm, 50/60 amp   | 10      |
|    | C109-409              | .11.843.021.409  | S2009X              | Nozzle, 0.9 mm, 70/80 amp   | 10      |
|    | C109-410              | .11.843.021.410  | S2010X              | Nozzle, 1.0 mm, 80/90 amp   | 10      |
|    | C109-411              | .11.843.021.411  | S2011X              | Nozzle, 1.1 mm, 90/100 amp  | 10      |
|    | C109-112              | .11.843.121.412  | S2112X              | Nozzle, 1.2 mm, 100 amp     | 10      |
|    | C109-412              | .11.843.021.412  | S2012X              | Nozzle, 1.2 mm, 100/130 amp | 10      |
|    | C109-114              | .11.843.121.414  | S2114X              | Nozzle, 1.4 mm, 130 amp     | 10      |
|    | C109-414              | .11.843.021.414  | S2014X              | Nozzle, 1.4 mm, 130/160 amp | 10      |
|    | C109-416              | .11.843.021.416  | S2016X              | Nozzle, 1.6 mm, 160 amp     | 10      |
|    | C109-116              | .11.843.121.416  | S2116X              | Nozzle, 1.6 mm, 160 amp     | 10      |
| 7  | C106-153              | .11.835.221.153  | Z101                | Gas guide cap, 0.4 mm       | 1       |
|    | C109-154              | .11.835.221.154  | Z102                | Gas guide cap, 0.4 mm       | 1       |
| 8  | K106-253              | .11.834.321.153  | Z111                | Gas guide cap               | 1       |
| 9  | C106-303              | .11.835.421.303  | Z111A               | Spacer                      | 1       |
| 10 | C109-1010*            | .11.843.021.310  | S002X               | SilverLine® electrode, XL   | 1       |
|    | C109-1030*            | .11.843.121.310  | S012X               | SilverLine electrode, XL    | 1       |
|    | K109-152              | .11.842.401.152  | S901                | Cooling tube                | 1       |

### Consumables – Stainless steel and aluminum

|    | Centricut part number | Reference number | Alternate reference | Description               | Pkg qty |
|----|-----------------------|------------------|---------------------|---------------------------|---------|
| 1  | C106-081              | .11.835.201.081  | Z501                | Protection cap            | 1       |
| 2  | C106-571              | .11.835.201.1571 | Z4020               | Swirl gas cap, 2.0 mm     | 1       |
| 3  | C106-1581             | .11.835.411.1581 | Z4530               | Swirl gas cap, 3.0 mm     | 1       |
|    | C109-580              | .11.835.411.1580 | Z4535               | Swirl gas cap, 3.5 mm     | 1       |
|    | C106-1591             | .11.835.411.1591 | Z4540               | Swirl gas cap, 4.0 mm     | 1       |
|    | C109-590              | .11.835.411.1590 | Z4545               | Swirl gas cap, 4.5 mm     | 1       |
|    | C53-158               | .11.833.101.158  | V4350               | Swirl gas cap, 5.0 mm     | 1       |
| 4  | K109-160              | .11.842.401.160  | S3004               | Nozzle cap, 0.4 mm        | 1       |
|    | C109-162              | .11.842.401.162  | S3008               | Nozzle cap, 0.8 mm        | 1       |
|    | C109-621              | .11.842.401.1621 | S3018               | Nozzle cap, 0.8 mm        | 1       |
| 5  | C109-407              | .11.843.021.407  | S2007X              | Nozzle, 0.7 mm, 35 amp    | 10      |
|    | C109-408              | .11.843.021.408  | S2008X              | Nozzle, 0.8 mm, 50/60 amp | 10      |
| 6  | C109-614              | .11.843.111.614  | S2514X              | Nozzle, 1.4 mm, 120 amp   | 5       |
|    | C109-616              | .11.843.111.616  | S2516X              | Nozzle, 1.6 mm, 140 amp   | 5       |
|    | C109-618              | .11.843.111.618  | S2518X              | Nozzle, 1.8 mm, 160 amp   | 5       |
| 8  | K106-253              | .11.834.321.153  | Z111                | Gas guide cap             | 1       |
| 7  | C106-153              | .11.835.221.153  | Z101                | Gas guide cap, 0.4 mm     | 1       |
| 11 | C109-510              | .11.842.411.510  | S042                | Electrode                 | 1       |
|    | C109-1510             | .11.842.511.510  | S052                | Electrode                 | 1       |
|    | K109-152              | .11.842.401.152  | S901                | Cooling tube              | 1       |



**Hypertherm technology –  
SilverLine electrodes**



Torch: PerCut 370.2®

### Consumables – Carbon steel

|    | Centricut part number | Reference number | Alternate reference | Description                                | Pkg qty |
|----|-----------------------|------------------|---------------------|--|---------|
| 1  | C117-155              | .11.833.101.155  | V4335               | Swirl gas cap, 3.5 mm                      | 1       |
|    | C117-157              | .11.833.101.157  | V4345               | Swirl gas cap, 4.5 mm                      | 1       |
| 2  | C117-081              | .11.841.721.081  | T502                | Protection cap                             | 1       |
| 4  | C117-0271             | .11.836.921.271  | T522                | Swirl gas nozzle                           | 1       |
| 6  | C117-163              | .11.836.901.163  | T3030               | Nozzle cap                                 | 1       |
|    | C117-164              | .11.836.901.164  | T3045               | Nozzle cap                                 | 1       |
|    | C117-165              | .11.836.901.165  | T3060               | Nozzle cap                                 | 1       |
| 8  | C117-015*             | .11.846.921.415  | T2115Y              | CoolFlow™ nozzle, 1.5 mm, 120 amp          | 1       |
|    | C117-020*             | .11.846.921.420  | T2120Y              | CoolFlow nozzle, 2.0 mm, 200 amp           | 1       |
|    | C117-025*             | .11.846.921.425  | T2125Y              | CoolFlow nozzle, 2.5 mm, 250 amp           | 1       |
|    | C117-027*             | .11.846.921.427  | T2127Y              | CoolFlow nozzle, 2.7 mm, 300 amp           | 1       |
|    | C117-030*             | .11.846.921.430  | T2130Y              | CoolFlow nozzle, 3.0 mm, 360 amp           | 1       |
| 10 | C117-153              | .11.836.921.153  | T101                | Gas guide                                  | 1       |
|    | C117-154              | .11.836.921.154  | T102                | Gas guide                                  | 1       |
|    | C117-542              | .11.836.921.1542 | T104                | Gas guide                                  | 1       |
| 11 | C117-1000*            | .11.844.921.300  | T012Y               | SilverLine® electrode, O <sub>2</sub> /Air | 1       |

### Consumables – Stainless steel and aluminum

|    | Centricut part number | Reference number | Alternate reference | Description                       | Pkg qty |
|----|-----------------------|------------------|---------------------|-----------------------------------|---------|
| 1  | C117-550              | .11.833.101.1550 | V4330               | Swirl gas cap, 3.0 mm             | 1       |
|    | C117-156              | .11.833.101.156  | V4340               | Swirl gas cap, 4.0 mm             | 1       |
|    | C117-157              | .11.833.101.157  | V4345               | Swirl gas cap, 4.5 mm             | 1       |
|    | C53-158               | .11.833.101.158  | V4350               | Swirl gas cap, 5.0 mm             | 1       |
| 5  | C117-159              | .11.833.101.159  | V4360               | Swirl gas cap, 6.0 mm             | 1       |
|    | C117-540              | .11.846.901.1540 | T4040               | Swirl gas cap                     | 1       |
|    | C117-545              | .11.846.901.1545 | T4045               | Swirl gas cap                     | 1       |
|    | C117-1550             | .11.846.901.1550 | T4050               | Swirl gas cap                     | 1       |
| 2  | C117-081              | .11.841.721.081  | T502                | Protection cap                    | 1       |
| 3  | C117-1081             | .11.846.901.081  | T503                | Protection cap                    | 1       |
| 4  | C117-0271             | .11.836.921.271  | T522                | Swirl gas nozzle                  | 1       |
| 6  | C117-160              | .11.836.901.160  | T3000               | Nozzle cap                        | 1       |
|    | C117-608              | .11.846.901.1608 | T3208               | Nozzle cap                        | 1       |
|    | C117-609              | .11.846.901.1609 | T3209               | Nozzle cap                        | 1       |
|    | C117-619              | .11.846.901.1619 | T3219               | Nozzle cap                        | 1       |
|    | C117-628              | .11.846.901.1628 | T3228               | Nozzle cap                        | 1       |
| 9  | C117-623*             | .11.836.911.623  | T2523               | CoolFlow™ nozzle, 2.3 mm, 250 amp | 1       |
|    | C117-625*             | .11.836.911.625  | T2525               | CoolFlow nozzle, 2.5 mm, 280 amp  | 1       |
|    | C117-627*             | .11.846.911.627  | T2427               | CoolFlow nozzle, 2.7 mm, 360 amp  | 1       |
|    | C117-629*             | .11.846.911.629  | T2429               | CoolFlow nozzle, 2.9 mm, 440 amp  | 1       |
| 12 | C117-500              | .11.836.911.500  | T051                | Electrode, ArH <sub>2</sub>       | 1       |

### Maintenance Items

|  | Centricut part number | Reference number | Alternate reference | Description                                 | Pkg qty |
|--|-----------------------|------------------|---------------------|---|---------|
|  | C117-152              | .11.844.901.152  | T902Y               | Cooling tube (carbon steel)                 | 1       |
|  | C117-230              | .11.828.911.230  | V951                | Cooling tube (stainless steel and aluminum) | 1       |
|  | Q27055                | N/A              |                     | Lubricant .25 oz. (7 ml) tube               | 1       |

\*Centricut part features a unique Hypertherm design that differs from the OEM design.

**Hypertherm technology –  
SilverLine electrodes and  
CoolFlow™ nozzles**

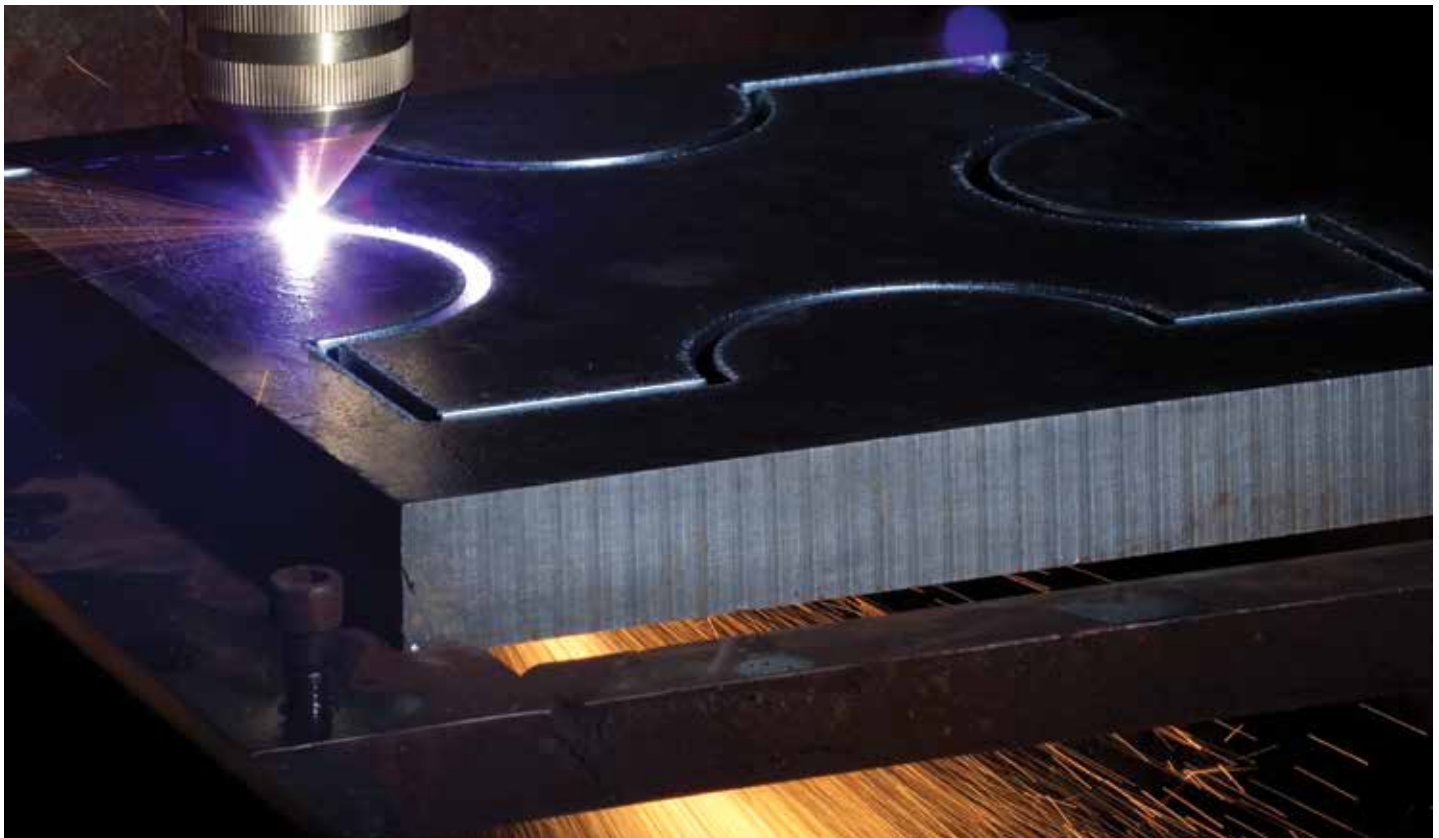
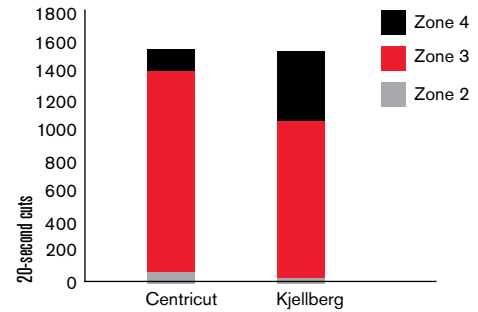
# New consumables for Kjellberg® PerCut 450M® torch

Centricut consumables lower your cost of cutting and deliver excellent cut speeds and cut quality. Fit all versions of the PerCut 450M torch.

- Equal performance to Kjellberg at a lower price
- Improved cut quality over the life of the consumables at 280A
- Critical to function tolerances and precision manufacturing guarantee consistency of parts set to set
- No special system set up required and Centricut parts fit all PerCut 450M torch designs
- Consumables available for Kjellberg Contour Cut™ processes

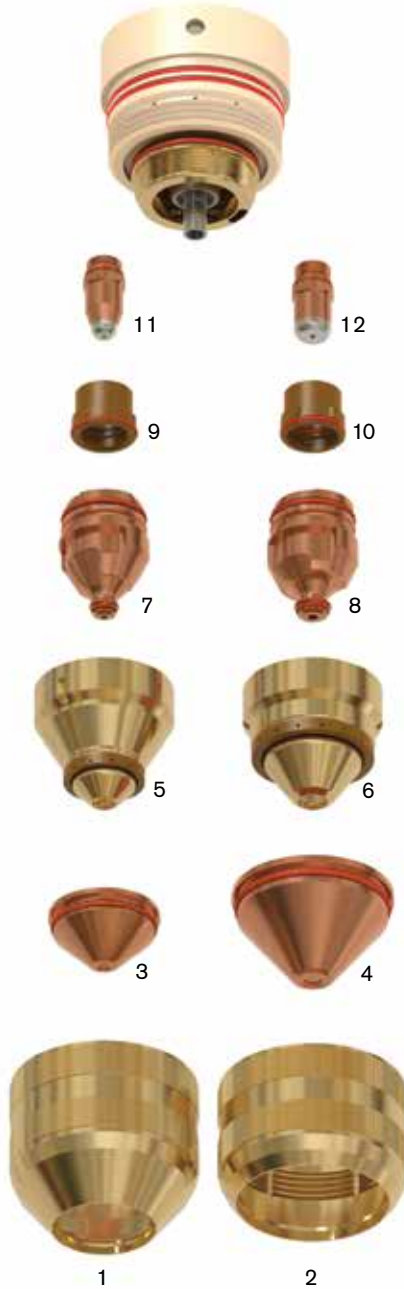
Consumable life with ISO 9013.2002(E) cut quality ranges noted

280 A cutting of 19 mm mild steel



Torch: PerCut 450M®

## Consumables – Carbon steel



|    | Centricut part number | Reference number | Alternate reference | Description                              | Pkg qty |
|----|-----------------------|------------------|---------------------|--|---------|
| 1  | C124-081              | .11.848.201.081  | G501                | Protection cap, 20–200 amp               | 1       |
| 2  | C124-1081             | .11.848.401.081  | G521                | Protection cap, 280–440 amp              | 1       |
| 3  | C124-520              | .11.848.201.1520 | G4020               | Swirl gas cap, 60 amp                    | 1       |
|    | C124-525              | .11.848.201.1525 | G4025               | Swirl gas cap, 90–130 amp                | 1       |
|    | C124-530              | .11.848.201.1530 | G4030               | Swirl gas cap, 90–200 amp                | 1       |
|    | C124-535              | .11.848.201.1535 | G4035               | Swirl gas cap, 200 amp, Contour Cut™     | 1       |
|    | C124-540              | .11.848.201.1540 | G4040               | Swirl gas cap, 200 amp, Contour Cut™     | 1       |
| 4  | C124-550              | .11.848.401.1550 | G4350               | Swirl gas cap, 280–360 amp               | 1       |
|    | C124-555              | .11.848.401.1555 | G4355               | Swirl gas cap, 360 amp                   | 1       |
|    | C124-628              | .11.848.201.1628 | G3028               | Nozzle cap, 60–200 amp                   | 1       |
| 5  | C124-609              | .11.848.401.1609 | G3209               | Nozzle cap, 360 amp                      | 1       |
|    | C124-619              | .11.848.401.1619 | G3219               | Nozzle cap, 280–360 amp                  | 1       |
|    | C124-629              | .11.848.401.1629 | G3229               | Nozzle cap, 360 amp                      | 1       |
| 6  | C124-649              | .11.848.401.1649 | G3249               | Nozzle cap, 280 amp                      | 1       |
|    | C124-408*             | .11.848.221.408  | G2008Y              | CoolFlow™ nozzle, 60 amp                 | 1       |
|    | C124-410*             | .11.848.221.410  | G2010Y              | CoolFlow nozzle, 90 amp                  | 1       |
|    | C124-412*             | .11.848.221.412  | G2012Y              | CoolFlow nozzle, 130 amp                 | 1       |
|    | C124-414*             | .11.848.221.414  | G2014Y              | CoolFlow nozzle, 160 amp                 | 1       |
| 7  | C124-417*             | .11.848.221.417  | G2017Y              | CoolFlow nozzle, 200 amp                 | 1       |
|    | C124-426*             | .11.848.421.426  | G2326Y              | CoolFlow nozzle, 280 amp                 | 1       |
| 8  | C124-430*             | .11.848.421.430  | G2330Y              | CoolFlow nozzle, 360 amp                 | 1       |
|    | C124-145              | .11.848.221.145  | G101                | Gas guide, Low amperage and Contour Cut™ | 1       |
| 9  | C124-146              | .11.848.221.146  | G102                | Gas guide, 60–200 amp                    | 1       |
|    | C124-045              | .11.848.421.145  | G121                | Gas guide, 280–400 amp                   | 1       |
| 10 | C124-1000*            | .11.848.221.300  | G002Y               | SilverLine® electrode, 20–200 amp        | 1       |
| 11 | C124-1010*            | .11.848.421.310  | G032Y               | SilverLine electrode, 280 amp            | 1       |
|    | C124-1030*            | .11.848.421.330  | G034Y               | SilverLine electrode, 360 amp            | 1       |
|    | C124-142              | .11.848.201.142  | G901Y               | Cooling tube, 20–200 amp                 | 1       |
| 12 | C124-042              | .11.848.401.142  | G931Y               | Cooling tube, 280–400 amp                | 1       |

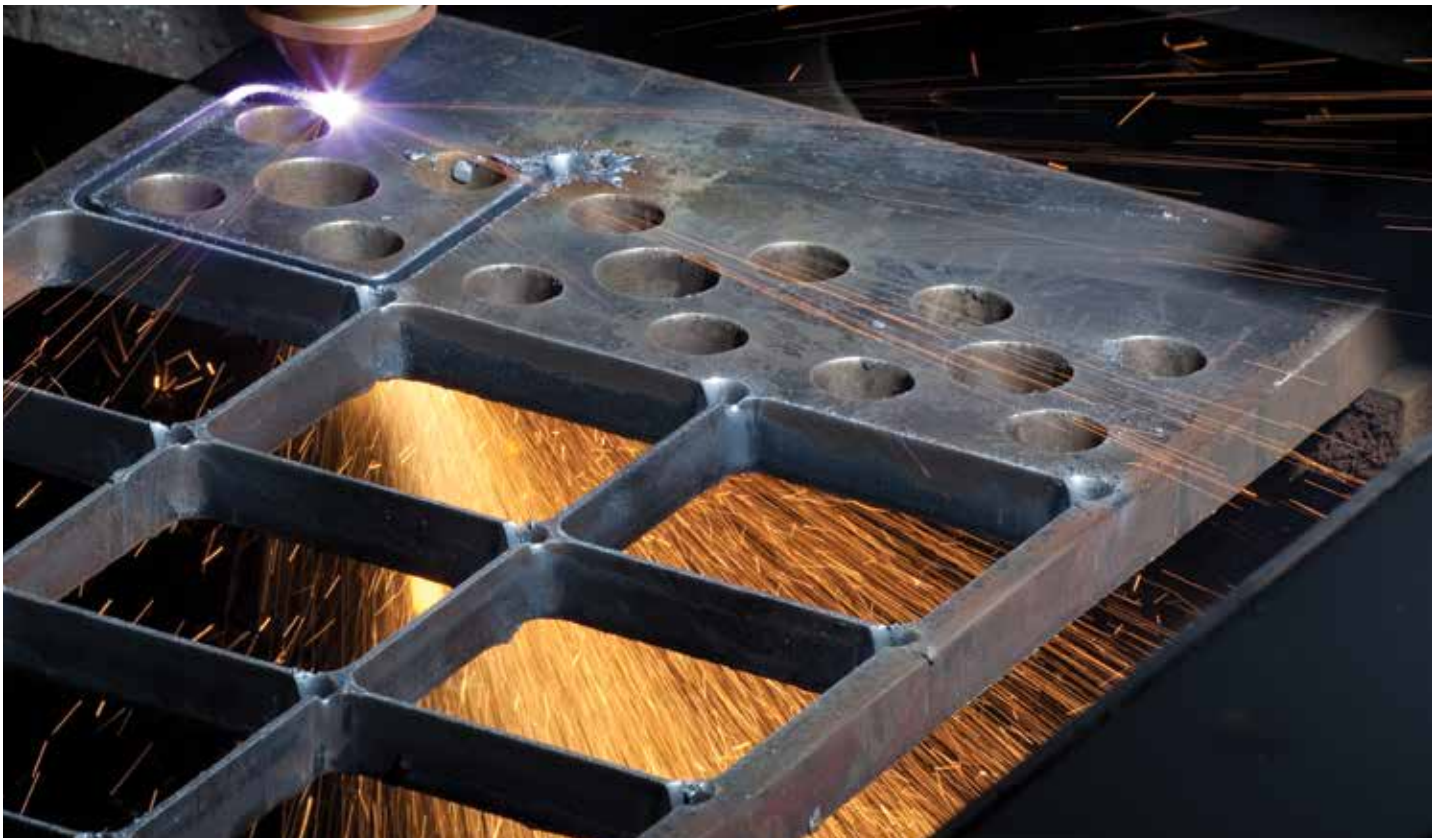
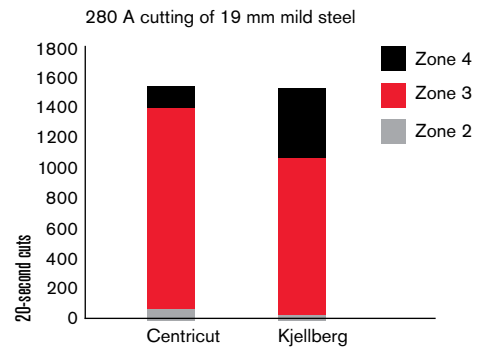
\*Centricut part features a unique Hypertherm design that differs from the OEM design.

# Enhancements for Kjellberg® PB-S80 torch

Centricut consumables lower your cost of cutting without sacrificing cut quality or productivity.

- 25% longer consumable life compared to Kjellberg Yellow XLife on mild steel
- Speed and cut quality equal to Kjellberg
- High quality parts – set to set consistency
- Full product line featuring consumables for both mild steel and stainless steel cutting

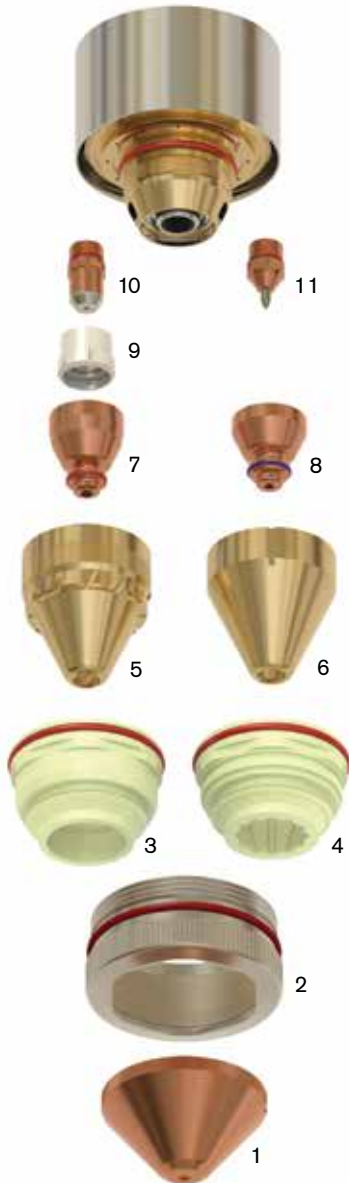
Consumable life with ISO 9013.2002(E) cut quality ranges noted



Torch: PB-S80

### Consumables – Carbon Steel (O<sub>2</sub>)

|    | Centricut part number | Reference number | Alternate reference | Description                       | Pkg qty |
|----|-----------------------|------------------|---------------------|-----------------------------------|---------|
| 1  | C117-155              | .11.833.101.155  | V4335               | Swirl gas cap, 3.5 mm             | 1       |
|    | C117-157              | .11.833.101.157  | V4345               | Swirl gas cap, 4.5 mm             | 1       |
| 2  | C53-261               | .11.833.101.261  | V501                | Protective cap                    | 1       |
|    | C117-261              | .11.833.121.261  | V502                | Protective cap                    | 1       |
| 3  | C117-271              | .11.836.901.271  | T521                | Swirl gas nozzle                  | 1       |
|    | C117-0271             | .11.836.921.271  | T522                | Swirl gas nozzle                  | 1       |
|    | C117-1271             | .11.833.121.271  | V522                | Swirl gas nozzle                  | 1       |
| 5  | C117-163              | .11.836.901.163  | T3030               | Nozzle cap                        | 1       |
|    | C117-164              | .11.836.901.164  | T3045               | Nozzle cap                        | 1       |
|    | C117-165              | .11.836.901.165  | T3060               | Nozzle cap                        | 1       |
| 7  | C117-015*             | .11.846.921.415  | T2115Y              | CoolFlow™ nozzle, 1.5 mm, 120 amp | 1       |
|    | C117-020*             | .11.846.921.420  | T2120Y              | CoolFlow nozzle, 2.0 mm, 200 amp  | 1       |
|    | C117-025*             | .11.846.921.425  | T2125Y              | CoolFlow nozzle, 2.5 mm, 250 amp  | 1       |
|    | C117-027*             | .11.846.921.427  | T2127Y              | CoolFlow nozzle, 2.7 mm, 300 amp  | 1       |
|    | C117-030*             | .11.846.921.430  | T2130Y              | CoolFlow nozzle, 3.0 mm, 360 amp  | 1       |
| 9  | C117-153              | .11.836.921.153  | T101                | Gas guide                         | 1       |
|    | C117-154              | .11.836.921.154  | T102                | Gas guide                         | 1       |
|    | C117-542              | .11.836.921.1542 | T104                | Gas guide                         | 1       |
| 10 | C117-1000*            | .11.844.921.300  | T012Y               | SilverLine® electrode             | 1       |
|    | C117-152              | .11.844.901.152  | T902Y               | Water tube                        | 1       |



**Hypertherm technology –  
SilverLine electrodes and  
CoolFlow™ nozzles**

### Consumables – Carbon Steel/Stainless Steel (Air)

|   | Centricut part number | Reference number | Alternate reference | Description               | Pkg qty |
|---|-----------------------|------------------|---------------------|---------------------------|---------|
| 1 | C53-158               | .11.833.101.158  | V4350               | Swirl gas cap, 5.0        | 1       |
| 2 | C117-261              | .11.833.121.261  | V502                | Protective cap            | 1       |
|   | C117-081              | .11.841.721.081  | T502                | Protective cap            | 1       |
| 4 | C117-1271             | .11.833.121.271  | V522                | Swirl gas nozzle          | 1       |
| 6 | C53-790               | .12.37790        | V3000               | Nozzle cap                | 1       |
|   | C53-850               | .12.40850        | L2                  | Nozzle, 250 amp           | 5       |
|   | C53-860               | .12.40860        | V101                | Gas guide                 | 5       |
|   | C53-870               | .12.40870        | K2                  | Electrode, Air            | 5       |
|   | K53-440               | .12.51440        | V931                | Cooling tube, PB-S75, Air | 1       |

### Consumables – Stainless Steel/Aluminum (ArH<sub>2</sub>)

|    | Centricut part number | Reference number | Alternate reference | Description   | Pkg qty |
|----|-----------------------|------------------|---------------------|---|---------|
| 1  | C117-550              | .11.833.101.1550 | V4330               | Swirl gas cap, 3.0 mm                               | 1       |
|    | C117-155              | .11.833.101.155  | V4335               | Swirl gas cap, 3.5 mm                               | 1       |
|    | C117-156              | .11.833.101.156  | V4340               | Swirl gas cap, 4.0 mm                               | 1       |
|    | C117-157              | .11.833.101.157  | V4345               | Swirl gas cap, 4.5 mm                               | 1       |
|    | C53-158               | .11.833.101.158  | V4350               | Swirl gas cap, 5.0 mm                               | 1       |
|    | C117-159              | .11.833.101.159  | V4360               | Swirl gas cap, 6.0 mm                               | 1       |
| 2  | C117-261              | .11.833.121.261  | V502                | Protective cap                                      | 1       |
|    | C117-081              | .11.841.721.081  | T502                | Protective cap                                      | 1       |
| 4  | C117-1271             | .11.833.121.271  | V522                | Swirl gas nozzle                                    | 1       |
| 6  | C53-790               | .12.37790        | V3000               | Nozzle cap  | 1       |
| 8  | C117-780*             | .12.37780        | A1                  | CoolFlow™ nozzle, 1.5 mm, 120 amp, ArH <sub>2</sub> | 1       |
|    | C117-620*             | .11.828.511.620  | A3                  | CoolFlow nozzle, 2.0 mm, 180 amp, ArH <sub>2</sub>  | 1       |
|    | C117-910*             | .12.40910        | A2                  | CoolFlow nozzle, 2.3 mm, 300 amp, ArH <sub>2</sub>  | 1       |
| 11 | C117-0550             | .11.828.911.550  | K5                  | Electrode, ArH <sub>2</sub>                         | 1       |
|    | C117-230              | .11.828.911.230  | V951                | Cooling tube  | 1       |

### Maintenance items

|  | Centricut part number | Reference number | Alternate reference | Description | Pkg qty |
|--|-----------------------|------------------|---------------------|-------------|---------|
|  | O27055                | N/A              |                     | O-ring lube | 1       |

Centricut, CoolFlow and SilverLine are registered trademarks of Hypertherm, Inc. and may be registered in the United States and/or other countries. All other trademarks are the properties of their respective owners. Centricut is in no way affiliated with Kjellberg.

Torch: PB-S70/75/77®

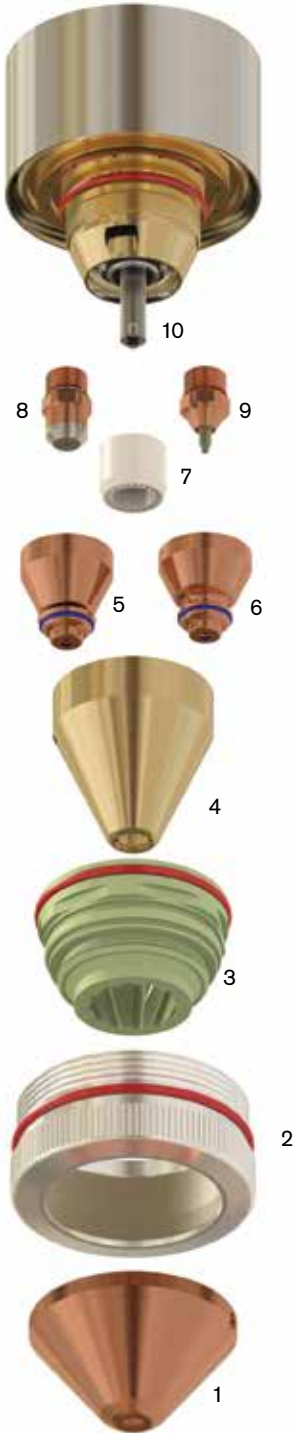
### Consumables

|           | Centricut part number | Reference number | Alternate reference | Description   | Pkg qty   |
|-----------|-----------------------|------------------|---------------------|---|---|
| 1         | K53-1156              | .11.833.111.156  | V4540               | Swirl gas cap, 4.0 mm                               | 1   |
|           | C53-158               | .11.833.101.158  | V4350               | Swirl gas cap, 5.0 mm                               | 1   |
| 2         | C53-261               | .11.833.101.261  | V501                | Protection cap                                      | 1   |
|           | K53-160               | .11.828.701.160  |                     | Protection cap, PB-S75                              | 1   |
| 3         | K53-271               | .11.833.101.271  | V521                | Swirl gas nozzle                                    | 1   |
|           | C53-790               | .12.37790        | V3000               | Nozzle cap  | 1   |
| 5         | C53-920*              | .11.828.901.420  | L1-XL               | CoolFlow™ nozzle, 160 amp                           | 1   |
|           | C53-925*              | .11.828.901.425  | L2-XL               | CoolFlow nozzle, 250 amp                            | 1   |
|           | C53-927*              | .11.828.901.427  | L4-XL               | CoolFlow nozzle, 300 amp                            | 1   |
|           | C53-050               | .12.43050        | L1                  | Nozzle, 160 amp, Air                                | 5   |
| 5         | C53-850               | .12.40850        | L2                  | Nozzle, 250 amp, Air                                | 5   |
|           | 6                     | C117-780*        | .12.37780           | A1  | CoolFlow, nozzle, 1.5 mm, 120 amp, ArH <sub>2</sub> |
| C117-620* |                       | .11.828.511.620  | A3                  | CoolFlow, nozzle, 2.0 mm, 180 amp, ArH <sub>2</sub> | 1   |
| C117-910* |                       | .12.40910        | A2                  | CoolFlow, nozzle, 2.3 mm, 300 amp, ArH <sub>2</sub> | 1   |
| 7         | C53-860               | .12.40860        | V101                | Gas guide   | 1   |
| 8         | C53-1000*             | .11.828.921.300  | K2-XL               | SilverLine® electrode, O <sub>2</sub>               | 1   |
|           | C53-870               | .12.40870        | K2                  | Electrode, Air                                      | 5   |
| 9         | C117-0550             | .11.828.911.550  | K5                  | Electrode, ArH <sub>2</sub>                         | 1   |

### Maintenance items

|    | Centricut part number | Reference number | Alternate reference | Description                            | Pkg qty |
|----|-----------------------|------------------|---------------------|--|---------|
|    | K53-923               | .10.505.923      |                     | O-ring, nozzle cap/torch seal, 28x2 mm | 1       |
|    | K53-908               | .10.505.908      |                     | O-ring, nozzle/torch, 18x2 mm          | 1       |
| 10 | C117-230              | .11.828.911.230  |                     | Cooling tube PB-S75 ArH <sub>2</sub>   |         |
|    | K53-440               | .12.51440        | V931                | Cooling tube, PB-S75, Air              | 1       |
|    | K53-500               | .12.48500        |                     | Removal tool, nozzle cap               | 1       |
|    | C23-001               | N/A              |                     | Removal tool, swirl ring               | 1       |
|    | 027055                |                  |                     | Lubricant .25 oz. (7 ml) tube          | 1       |

\*Centricut part features a unique Hypertherm design that differs from the OEM design.



**Hypertherm technology –  
SilverLine electrodes and  
CoolFlow™ nozzles**

System: Super-400 Plus®

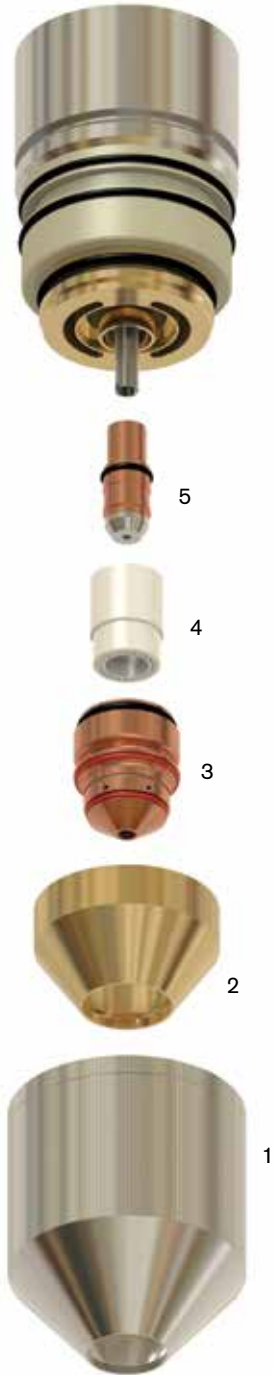
### Consumables

|   | Centricut part number | Reference number | Description            | Pkg qty |
|---|-----------------------|------------------|------------------------|---------|
| 1 | C121-503              | 40020503         | Protection cap         | 1       |
| 2 | C121-366              | 40016366         | Shield                 | 1       |
| 3 | C121-359*             | 40016359         | CoolFlow™ nozzle, 1.7R | 1       |
|   | C121-362*             | 40016362         | CoolFlow nozzle, 1.7L  | 1       |
|   | C121-360*             | 40016360         | CoolFlow nozzle, 2.3R  | 1       |
|   | C121-363*             | 40016363         | CoolFlow nozzle, 2.3L  | 1       |
|   | C121-233*             | 40017233         | CoolFlow nozzle, 2.9R  | 1       |
|   | C121-234*             | 40017234         | CoolFlow nozzle, 2.9L  | 1       |
| 4 | C121-899              | 40001899         | Swirl ring, R          | 1       |
|   | C121-567              | 40004567         | Swirl ring, L          | 1       |
| 5 | C121-1058*            | 40016358         | SilverLine® electrode  | 1       |

### Maintenance items

|  | Centricut part number | Reference number | Description                   | Pkg qty |
|--|-----------------------|------------------|-------------------------------|---------|
|  | 027055                | N/A              | Lubricant .25 oz. (7 ml) tube | 1       |

\*Centricut part features a unique Hypertherm design that differs from the OEM design.



**Hypertherm technology –  
SilverLine electrodes and  
CoolFlow™ nozzles**

System: Razor® 40 amp

### Consumables

|   | Centricut part number | Reference number | Description                               | Pkg qty |
|---|-----------------------|------------------|---|---------|
|   | C33-008T              | N/A              | Cap #1 with tab                           | 1       |
| 1 | C33-008               | 65-0432-001      | Cap #1                                    | 1       |
| 2 | C33-140               | 65-0432-003      | CoolFlow™ nozzle, O <sub>2</sub> , 0.4 mm | 5       |
|   | C33-130               | 65-0432-002      | CoolFlow nozzle, O <sub>2</sub> , 0.6 mm  | 5       |
|   | C33-160               | 65-0432-013      | CoolFlow nozzle, O <sub>2</sub> , 0.7 mm  | 5       |
| 3 | C33-006               | 65-0432-006      | Swirler, standard, CCW                    | 1       |
|   | C33-066               | 65-0432-066      | Swirler, reverse, CW                      | 1       |
| 4 | C33-021               | 65-0432-021      | Ceramic guide                             | 1       |
| 5 | C33-930               | 65-0432-005      | Electrode with o-ring                     | 5       |

### Maintenance items

|  | Centricut part number | Reference number | Description                           | Pkg qty |
|--|-----------------------|------------------|---------------------------------------|---------|
|  | C33-007               | 65-0432-007      | O-ring kit                            | 3       |
|  | K33-010               | 969-94-41010     | Razor 40 torch body                   | 1       |
|  | K33-420               | 65-0432-020      | Razor 40 torch body with 1.8 mm leads | 1       |
|  | L70-765               | 21765            | Nozzle removal tool                   | 1       |
|  | 027055                | N/A              | Lubricant .25 oz. (7 ml) tube         | 1       |

\*Centricut part features a unique Hypertherm design that differs from the OEM design.



**Hypertherm technology –  
CoolFlow™ nozzles**



System: Razor® 90/120 amp

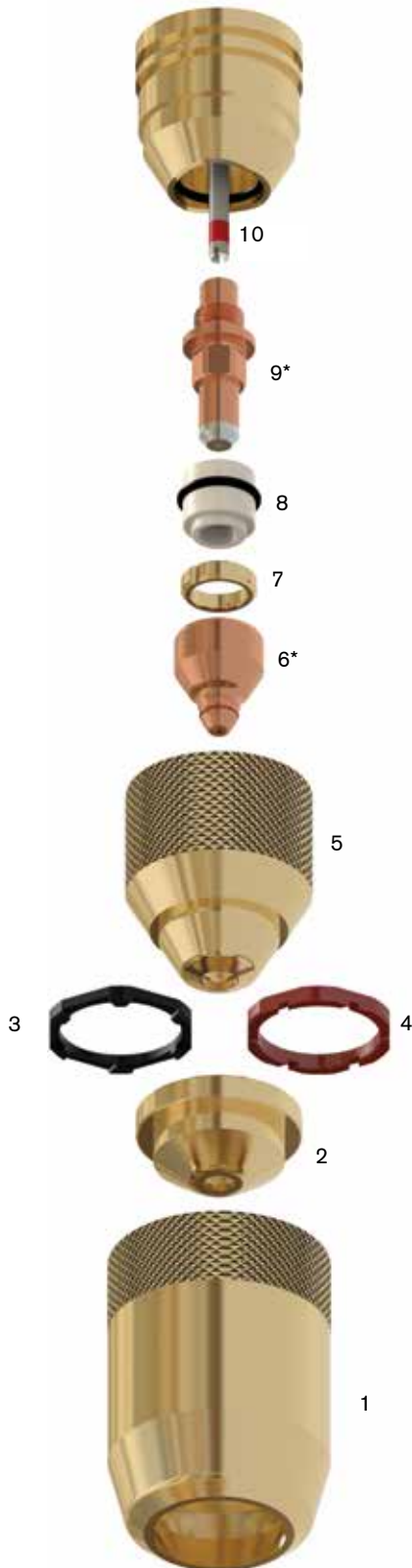
### Consumables

|   | Centricut part number | Reference number | Description                               | Pkg qty |
|---|-----------------------|------------------|---|---------|
| 1 | C35-016               | 65-0434-016      | Cap #2                                    | 1       |
| 2 | C35-019               | 65-0434-019      | Shield cap, 90 amp                        | 1       |
|   | C35-905               | 65-0442-005      | Shield cap, 120 amp                       | 1       |
|   | C35-004               | 65-0438-004      | Shield cap, quicksilver                   | 1       |
| 3 | C35-540               | 65-0434-022      | Spacer ring, 90 amp                       | 1       |
| 4 | C35-250               | 65-0442-004      | Spacer ring, 120 amp                      | 1       |
| 5 | C35-015               | 65-0434-015      | Cap #1                                    | 1       |
|   | C35-020               | 65-0438-005      | Cap #2, quick silver                      | 1       |
| 6 | C35-160               | 65-0434-017      | CoolFlow™ nozzle, O <sub>2</sub> , 0.8 mm | 5       |
|   | C35-180               | 65-0434-007      | CoolFlow nozzle, O <sub>2</sub> , 1.1 mm  | 5       |
|   | C35-002               | 65-0442-002      | CoolFlow nozzle, O <sub>2</sub> , 1.3 mm  | 5       |
|   | C35-8002              | 65-0438-002      | CoolFlow nozzle, "S", 0.8 mm, quicksilver | 5       |
|   | C35-8003              | 65-0438-003      | CoolFlow nozzle, "S", 1.1 mm, quicksilver | 5       |
| 7 | C35-018               | 65-0434-018      | Swirler, 90 amp, CCW                      | 1       |
|   | C35-003               | 65-0442-003      | Swirler, 120 amp, CW                      | 1       |
| 8 | C35-350               | 65-0434-020      | Ceramic guide with o-ring                 | 1       |
| 9 | C35-1020*             | 65-0442-001      | SilverLine® electrode, 90-120 amp         | 1       |

### Maintenance items

|    | Centricut part number | Reference number | Description                             | Pkg qty |
|----|-----------------------|------------------|---|---------|
| 10 | C35-110               | 65-0442-009      | Cooling tube, 90/120 amp                | 1       |
|    | K35-021               | 65-0434-021      | O-ring kit                              | 1       |
|    | K35-006               | 65-0442-006      | Razor 90/120 torch body without o-rings | 1       |
|    | K35-690               | 969-94-49690     | Razor 90/120 torch body with 6' leads   | 1       |
|    | 027055                | N/A              | Lubricant .25 oz. (7 ml) tube           | 1       |

\*Centricut part features a unique Hypertherm design that differs from the OEM design.



**Hypertherm technology –  
SilverLine electrodes and  
CoolFlow™ nozzles**

System: Razor®300 amp

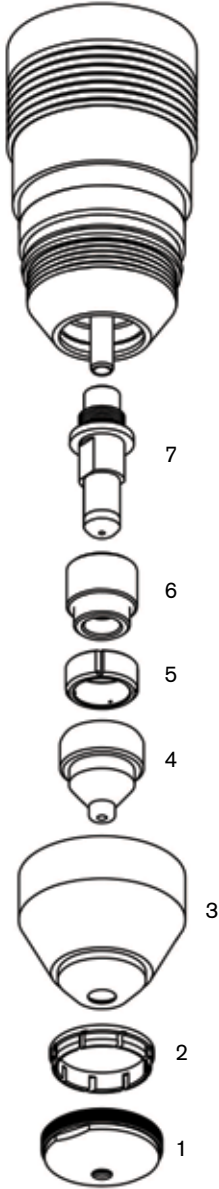
### Consumables

|   | Centricut part number | Reference number | Description                    | Pkg qty |
|---|-----------------------|------------------|--------------------------------|---------|
| 1 | C78-130               | 969-95-30130     | Shield cap                     | 1       |
| 2 | C78-190               | 969-95-30190     | Shield ring                    | 1       |
| 3 | C78-120               | 969-95-30210     | Inner cap                      | 1       |
| 4 | C78-150               | 969-95-30150     | Nozzle, 1.2 mm, 100 amp        | 1       |
|   | C78-220               | 969-95-30220     | Nozzle, 2.2 mm, 200 amp        | 1       |
|   | C78-280               | 969-95-30140     | Nozzle, 2.8 mm, 300 amp        | 1       |
| 5 | C78-181               | 969-95-30181     | Swirler                        | 1       |
| 6 | C78-171               | 969-95-30171     | Guide, ceramic, 300 amp        | 1       |
| 7 | C78-1060*             | 969-95-30160     | SilverLine® electrode, 300 amp | 1       |

### Maintenance items

|  | Centricut part number | Reference number | Description                   | Pkg qty |
|--|-----------------------|------------------|-------------------------------|---------|
|  | 027055                | N/A              | Lubricant .25 oz. (7 ml) tube | 1       |

\*Centricut part features a unique Hypertherm design that differs from the OEM design.



**Hypertherm technology -  
SilverLine electrodes**

System: PAK® 3XR™, 5XR™, 5Xi™, 6XR™, 625XR™, 750XR™, Dynapak 4Xi, 6Xi

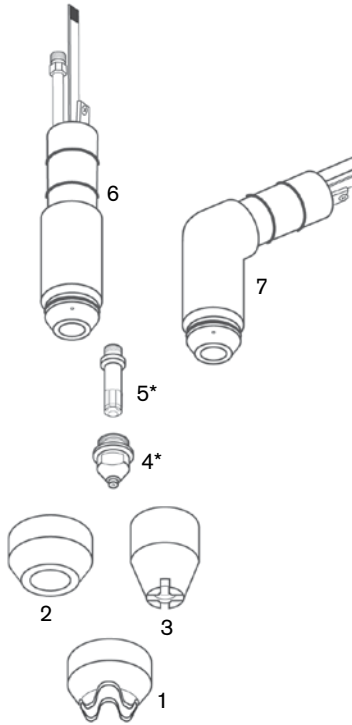
### Consumables

|   | Centricut part number | Reference number | Description                               | Pkg qty |
|---|-----------------------|------------------|---|---------|
| 1 | T06-779               | 9-5779           | Crown cup, copper long, use with C06-781  | 1       |
|   | C07-780               | 9-5780           | Crown cup, copper short, use with C07-781 | 1       |
| 2 | C06-630               | 9-5630           | Shield cup, ceramic                       | 5       |
|   | C06-526               | 8-5526           | Crown cup, ceramic                        | 5       |
| 4 | C06-781               | 8-2159           | Shield cup, shatter proof                 | 5       |
|   | C06-631*              | 9-5631           | Tip, chrome, .043, 55 amp                 | 10      |
|   | C06-031*              | N/A              | Tip, copper, .043, 55 amp                 | 10      |
|   | C06-718*              | 9-5718           | Tip, chrome, .038, 35 amp                 | 5       |
|   | C06-321               | 8-3321           | Tip, chrome, .047, 70 amp                 | 5       |
|   | C06-724               | 9-5724           | Tip, chrome, gouging, .078                | 5       |
| 5 | C06-633*              | 9-5633           | Electrode, chrome                         | 10      |
|   | C06-033*              | N/A              | Electrode, copper                         | 10      |

### Maintenance items

|   | Centricut part number | Reference number | Description                         | Pkg qty |
|---|-----------------------|------------------|-------------------------------------|---------|
| 6 | C06-634               | 9-5634           | PCM-51 torch body                   | 1       |
| 7 | C06-635               | 9-5635           | PCH-51 torch body, 70°              | 1       |
|   | C06-901               | N/A              | Bottoming tap, 7/16 in-28, tip      | 1       |
|   | C06-902               | N/A              | Bottoming tap, 1/4 in-28, electrode | 1       |
|   | C06-525               | 8-5525           | O-ring                              | 5       |
|   | C08-010               | N/A              | Ball casters                        | 5       |
|   | Q27055                | N/A              | Lubricant .25 oz. (7 ml) tube       | 1       |

\*Centricut part features a unique Hypertherm design that differs from the OEM design.



System: PAK® 5XR™,6XR™,7XR™,8XR™, 10XR™, 625XR™, 750XR™, 1000XR™, 1250XR™

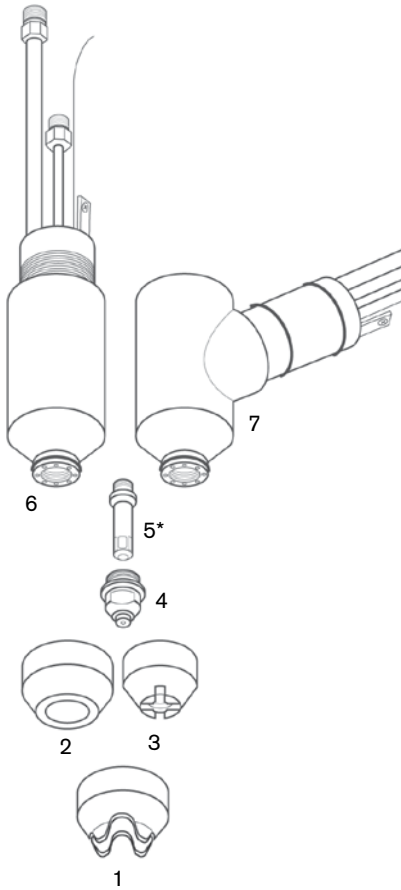
### Consumables

|   | Centricut part number | Reference number | Description                               | Pkg qty                   |    |
|---|-----------------------|------------------|---|---------------------------|----|
| 1 | T06-779               | 9-5779           | Crown cup, copper long, use with C06-781  | 1                         |    |
|   | C07-780               | 9-5780           | Crown cup, copper short, use with C07-781 | 1                         |    |
| 3 | C07-694               | 9-5694           | Crown cup, ceramic                        | 5                         |    |
| 2 | C07-717               | N/A              | Shield cup, short                         | 10                        |    |
|   | C07-617               | 9-5617           | Shield cup, long                          | 5                         |    |
|   | C07-781               | 9-5781           | Shield cup, shatter proof                 | 5                         |    |
|   | C07-702               | 9-5702           | Tip, .035, 35 amp                         | 10                        |    |
| 4 | C07-618               | 9-5618           | Tip, .043, 55 amp                         | 10                        |    |
|   | C07-707               | 9-5707           | Tip, .047, 70 amp                         | 10                        |    |
|   | T07-782               | 9-5782           | Tip, .052, 80 amp                         | 5                         |    |
|   | C07-708               | 9-5708           | Tip, .059, 105 amp                        | 10                        |    |
|   | C07-908               | N/A              | Tip, .059, 105 amp, chrome                | 10                        |    |
|   | T07-710               | 9-5710           | Tip, .093                                 | 10                        |    |
|   | 5                     | C07-331*         | 8-3331                                    | Electrode, Air, copper    | 10 |
|   |                       | C07-619          | 9-5619                                    | Electrode, Air, chrome    | 10 |
|   |                       | T07-711          | 9-5711                                    | Electrode, N <sub>2</sub> | 5  |
|   |                       | C07-931          | N/A                                       | Electrode                 | 10 |

### Maintenance items

|   | Centricut part number | Reference number | Description                      | Pkg qty |
|---|-----------------------|------------------|----------------------------------|---------|
| 6 | C07-643               | 9-5643           | PCM-52 torch body                | 1       |
| 7 | C07-642               | 9-5642           | PCH-52 torch body, 70°           | 1       |
|   | C06-525               | 8-5525           | O-ring                           | 5       |
|   | C08-010               | N/A              | Ball casters                     | 5       |
|   | C07-901               | N/A              | Bottoming tap 1/2-20, tip        | 1       |
|   | C07-902               | N/A              | Bottoming tap 7mm x 1, electrode | 1       |
|   | T07-007               | 8-4007           | Wrench, tip                      | 1       |
|   | T07-620               | 9-5620           | Wrench, electrode                | 1       |
|   | 027055                | N/A              | Lubricant .25 oz. (7 ml) tube    | 1       |

\*Centricut part features a unique Hypertherm design that differs from the OEM design.



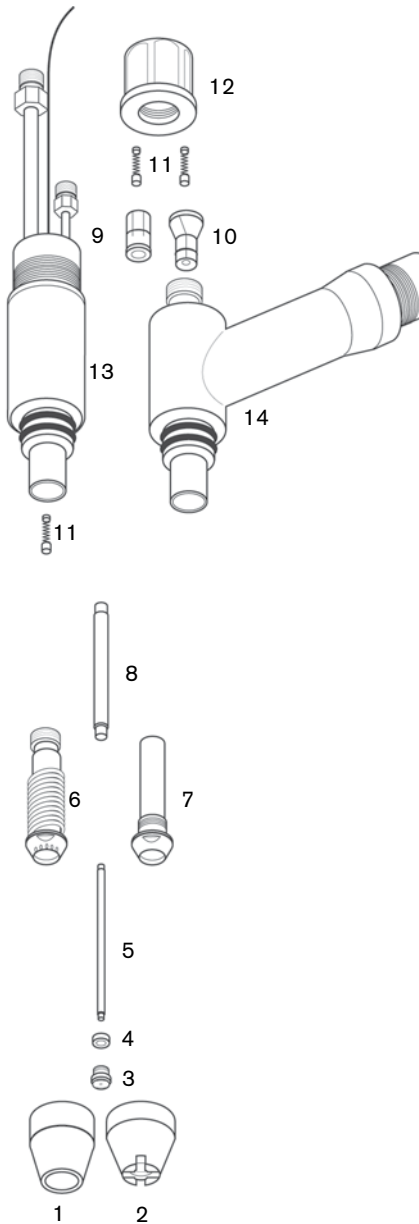
System: PAK® 22, 10, 5

### Consumables

|    | Centricut part number | Reference number | Description              | Pkg qty |
|----|-----------------------|------------------|--------------------------|---------|
| 1  | C08-088               | 8-4088           | Shield cup               | 5       |
| 2  | T08-213               | 8-4213           | Shield cup, crown        | 5       |
|    | T08-045               | 8-4045           | Shield cup, threaded 4A  | 1       |
| 3  | C08-189               | 8-4189           | Tip, .030                | 10      |
|    | C08-211               | 8-4211           | Tip, .046                | 10      |
|    | C08-153               | 8-4153           | Tip, .059, 100 amp       | 10      |
|    | C08-170               | 8-4170           | Tip, .070, ArH2, 100 amp | 10      |
| 4  | C08-421               | 9-2421           | Gas distributor          | 10      |
| 5  | C08-073               | 8-4073           | Electrode                | 5       |
| 6  | C08-154               | 8-4154           | Liner, 4B                | 1       |
| 7  | T08-011               | 8-4011           | Liner, 4A                | 1       |
| 8  | C08-182               | 8-4182           | Sleeve                   | 1       |
| 9  | T08-156               | 8-4156           | Collet, 4B               | 1       |
| 10 | T08-049               | 8-4049           | Collet, 4A               | 1       |
| 11 | C08-050               | 8-4050           | Spring assembly          | 5       |
| 12 | T08-158               | 8-4158           | Back cap                 | 1       |
| 12 | T08-158               | 8-4158           | Back cap                 | 1       |
|    | C08-069               | 8-4069           | Gasket                   | 5       |

### Maintenance items

|    | Centricut part number | Reference number | Description                   | Pkg qty |
|----|-----------------------|------------------|-------------------------------|---------|
|    | C08-010               | N/A              | Ball casters                  | 5       |
| 13 | T08-196               | 8-4196           | PCM-4BT torch body            | 1       |
|    | T08-161               | 8-4061           | PCH-4B torch body, 90°        | 1       |
| 14 | T08-160               | 8-4160           | PCH-4B torch body, 70°        | 1       |
|    | T08-901               | 9-1901           | Insulating sleeve             | 1       |
|    | 027055                | N/A              | Lubricant .25 oz. (7 ml) tube | 1       |



System: PAK® 15XC, MERLIN®

### Consumables

|   | Centricut part number | Reference number | Description                         | Pkg qty |
|---|-----------------------|------------------|-------------------------------------|---------|
| 1 | T30-790               | 9-5790           | Shield cup, copper                  | 1       |
| 2 | C30-758               | 9-5758           | Shield cup, tip exposed             | 1       |
|   | C30-801               | 9-5801           | Shield cup, copper, tip exposed     | 1       |
| 3 | C30-748               | 9-5748           | Tip, Air, .043, 50 amp              | 5       |
|   | C30-747               | 9-5747           | Tip, Air, .055, 100 amp             | 5       |
|   | C30-746               | 9-5746           | Tip, Air, .070, 150 amp             | 5       |
|   | C30-766               | 9-5766           | Tip, N <sub>2</sub> , .052, 100 amp | 5       |
|   | C30-767               | 9-5767           | Tip, N <sub>2</sub> , .067, 150 amp | 5       |
|   | T30-753               | 9-5753           | Tip, O <sub>2</sub> , .043, 50 amp  | 5       |
|   | T30-752               | 9-5752           | Tip, O <sub>2</sub> , .052, 100 amp | 5       |
|   | C30-751               | 9-5751           | Tip, O <sub>2</sub> , .070, 150 amp | 5       |
| 4 | C30-749               | 9-5749           | Electrode, Air                      | 5       |
|   | C30-760               | 9-5760           | Electrode, O <sub>2</sub>           | 5       |

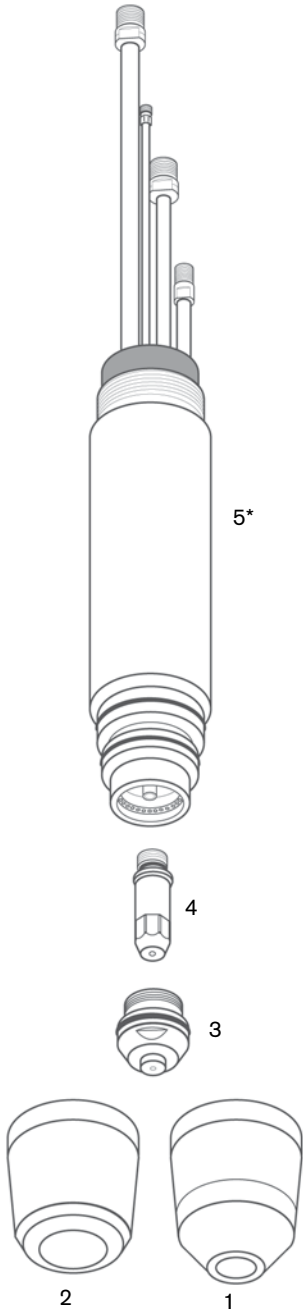
### Maintenance items

|   | Centricut part number | Reference number | Description                      | Pkg qty |
|---|-----------------------|------------------|----------------------------------|---------|
|   | C30-M33               | N/A              | Liner, replacement               | 1       |
|   | C30-M34               | N/A              | Gas distributor, replacement     | 1       |
|   | C30-WRCH              | N/A              | Liner wrench                     | 1       |
| 5 | C30-945*              | N/A              | PCM-150 modular torch body, 180° | 1       |
|   | C30-057               | N/A              | O-ring torch kit – see below     | 1       |
|   | 027055                | N/A              | Lubricant .25 oz. (7 ml) tube    | 1       |

### C30-057 O-ring torch kit includes

|  | Centricut part number | Reference number | Description                  | Pkg qty |
|--|-----------------------|------------------|------------------------------|---------|
|  | C30-035               | N/A              | O-ring (for gas distributor) | 1       |
|  | C30-037               | N/A              | O-ring (for liner)           | 1       |
|  | C30-040               | 8-0540           | O-ring (shield cup, large)   | 1       |
|  | C30-557               | 8-0557           | O-ring (shield cup, small)   | 5       |
|  | C30-041               | N/A              | O-ring (for liner)           | 1       |

\*Centricut part features a unique Hypertherm design that differs from the OEM design.



System: MERLIN® 3000, 6000, 6000GST

### Consumables



|          | Centricut part number | Reference number                             | Description  | Pkg qty                     |   |
|----------|-----------------------|--|--|-----------------------------|---|
| 1        | C55-803               | 20-1003                                      | Shield, 50 amp   | 1                           |   |
|          | C55-804               | 20-1004                                      | Shield, 100-225 amp                                    | 1                           |   |
|          | C55-805               | 20-1005                                      | Shield, 300 amp  | 1                           |   |
|          | C55-006               | 20-1006                                      | Shield, 100-300 amp, underwater                        | 1                           |   |
|          | T55-028               | 20-1028                                      | Shield, 100-300 amp, underwater                        | 1                           |   |
|          | 2                     | C55-002                                      | 20-1002  | Shield, cup body            | 1 |
| T55-029  |                       | 20-1029                                      | Shield, cup body, underwater                           | 1                           |   |
| T55-412  |                       | 9-6412                                       | Shield cup, Air, long                                  | 1                           |   |
| T55-411  |                       | 9-6411                                       | Shield cup, O <sub>2</sub> , long                      | 1                           |   |
| 3        | C55-030               | 20-1030                                      | Tip, 50 amp  | 1                           |   |
|          | C55-031               | 20-1031                                      | Tip, 100 amp   | 1                           |   |
|          | C55-032               | 20-1032                                      | Tip, 150 amp   | 1                           |   |
|          | C55-033               | 20-1033                                      | Tip, 225 amp   | 1                           |   |
|          | C55-034               | 20-1034                                      | Tip, 300 amp   | 1                           |   |
|          | C55-424               | 9-6424                                       | Tip, Air, 0.52, 70 amp                                 | 5                           |   |
|          | C55-425               | 9-6425                                       | Tip, Air, 0.59, 105 amp                                | 5                           |   |
|          | C55-432               | 9-6432                                       | Tip, Air, 0.70, 150 amp                                | 5                           |   |
|          | T55-419               | 9-6419                                       | Tip, O <sub>2</sub> , 0.52, 70 amp                     | 5                           |   |
|          | T55-420               | 9-6420                                       | Tip, O <sub>2</sub> , 0.59, 105 amp                    | 5                           |   |
|          | T55-433               | 9-6433                                       | Tip, O <sub>2</sub> , 0.70, 150 amp                    | 5                           |   |
|          | T55-428               | 9-6428                                       | Tip, ArH <sub>2</sub> , 0.52, 70 amp                   | 5                           |   |
|          | T55-429               | 9-6429                                       | Tip, ArH <sub>2</sub> , 0.59, 105 amp                  | 5                           |   |
|          | T55-434               | 9-6434                                       | Tip, ArH <sub>2</sub> , 0.73, 150 amp                  | 5                           |   |
|          | 4                     | C55-008                                      | 20-0008  | Gas distributor, 50-225 amp | 1 |
|          |                       | T55-009                                      | 20-1009  | Gas distributor, 300 amp    | 1 |
| T55-416  |                       | 9-6416                                       | Gas distributor  | 1                           |   |
| 5        | C55-710               | 20-1016,                                     | CopperLine® electrode, Air/O <sub>2</sub> , 50-300 amp | 1                           |   |
|          |                       | 20-1010                                      |  | 1                           |   |
|          |                       | 20-1021                                      |  | 1                           |   |
|          | C55-718               | 20-1015                                      | CopperLine electrode, Air/O <sub>2</sub> , 50-300 amp  | 1                           |   |
|          |                       | 20-1018                                      |  | 1                           |   |
|          | T55-017               | 20-1017                                      | Electrode, O <sub>2</sub> , 225 amp                    | 5                           |   |
|          | T55-023               | 20-1023                                      | Electrode, N <sub>2</sub> , 50-300 amp                 | 5                           |   |
|          | T55-025               | 20-1025                                      | Electrode, ArH <sub>2</sub> , 100-300 amp              | 5                           |   |
| T55-1211 | 20-1211               | Electrode, N <sub>2</sub> , ArH <sub>2</sub> | 5  |                             |   |

### Maintenance items

|   | Centricut part number | Reference number | Description                   | Pkg qty |
|---|-----------------------|------------------|-------------------------------|---------|
| 6 | T55-410               | 9-6410           | Maximizer 300 torch body      | 1       |
|   | C55-004               | N/A              | O-ring                        | 5       |
|   | C55-050               | N/A              | O-ring                        | 5       |
|   | 027055                | N/A              | Lubricant .25 oz. (7 ml) tube | 1       |

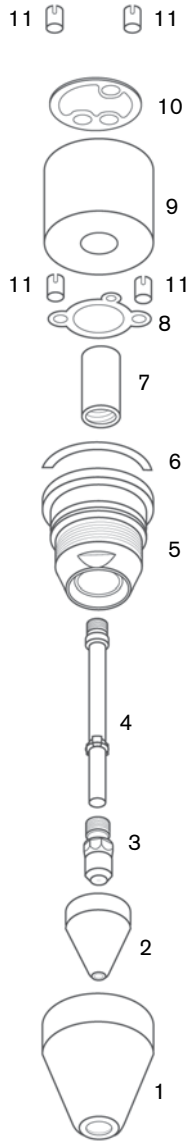
System: OW250®

### Consumables

|   | Centricut part number | Reference number | Description                                  | Pkg qty |
|---|-----------------------|------------------|--|---------|
| 1 | C14-332               | 648-332          | Nose piece                                   | 1       |
| 2 | C14-330               | 648-330          | Nozzle, Air, 063, 150 amp                    | 5       |
|   | C14-331-S             | 648-331          | Nozzle, Air, .098                            | 5       |
| 3 | C14-731               | N/A              | Nozzle, Air, .110                            | 5       |
|   | C14-328               | 648-328          | Electrode, low amp, Air, 150 amp             | 5       |
|   | C14-327               | 648-327          | Electrode, Air, with o-ring C14-010, 250 amp | 5       |
|   | C14-927               | 648-327          | Electrode, Air, without o-ring, 250 amp      | 5       |

### Maintenance items

|    | Centricut part number | Reference number | Description                   | Pkg qty |
|----|-----------------------|------------------|-------------------------------|---------|
| 4  | C14-326               | 648-326          | Cooling tube                  | 1       |
| 5  | C14-280               | 648-280          | Nozzle holder                 | 1       |
| 6  | C14-282               | 648-282          | Gasket spacers                | 2       |
| 7  | C14-281               | 648-281          | Gas guide ring                | 1       |
| 8  | C14-286               | 648-286          | Lower gasket                  | 5       |
| 9  | C14-287               | 648-287          | Insulating spacer             | 1       |
| 10 | C14-288               | 648-288          | Middle gasket                 | 5       |
| 11 | C14-285               | 648-285          | Hole guides                   | 5       |
|    | C14-010               | N/A              | O-ring                        | 5       |
|    | C14-283               | 648-283          | O-ring                        | 5       |
|    | C14-284               | 648-284          | O-ring                        | 5       |
|    | C14-793               | 649-793          | O-ring seal                   | 4       |
|    | 027055                | N/A              | Lubricant .25 oz. (7 ml) tube | 1       |





System: IC300®

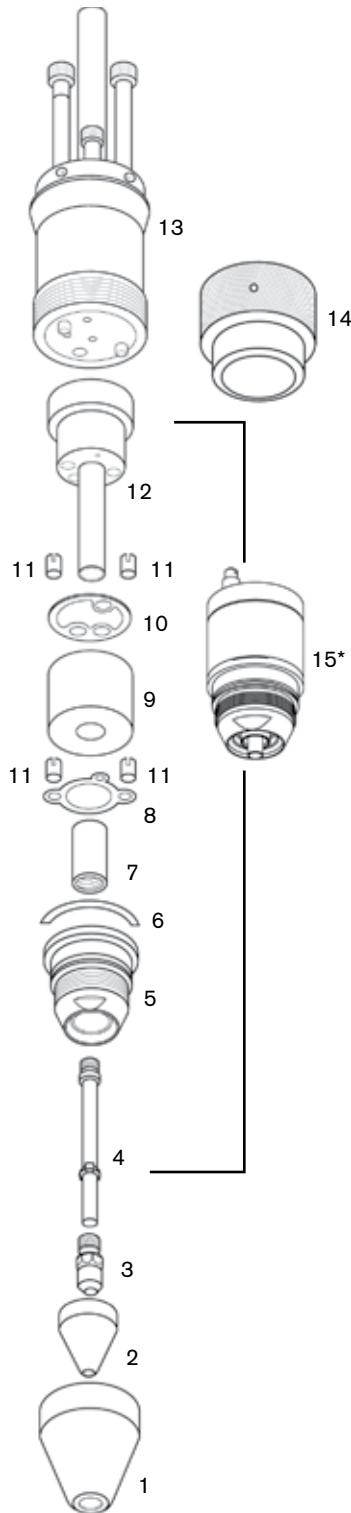
### Consumables

|   | Centricut part number | Reference number | Description                                  | Pkg qty |
|---|-----------------------|------------------|--|---------|
| 1 | C14-332               | 648-332          | Nose piece                                   | 1       |
| 2 | C14-330               | 648-330          | Nozzle, Air, .063, 150 amp                   | 5       |
|   | C14-331-S             | 648-331          | Nozzle, Air, .098                            | 5       |
|   | C14-731               | N/A              | Nozzle, Air, .110                            | 5       |
| 3 | C14-328               | 648-328          | Electrode, low amp, Air, 150 amp             | 5       |
|   | C14-327               | 648-327          | Electrode, Air, with o-ring C14-010, 250 amp | 5       |
|   | C14-927               | 648-327          | Electrode, Air, without o-ring, 250 amp      | 5       |

### Maintenance items

|    | Centricut part number | Reference number | Description                               | Pkg qty |
|----|-----------------------|------------------|---|---------|
| 4  | C14-794               | 649-794          | Cooling tube                              | 1       |
| 5  | C14-280               | 648-280          | Nozzle holder                             | 1       |
| 6  | C14-282               | 648-282          | Gasket spacers                            | 2       |
| 7  | C14-281               | 648-281          | Gas guide ring                            | 1       |
| 8  | C14-286               | 648-286          | Lower gasket                              | 5       |
| 9  | C14-959               | 649-959          | Insulating spacer                         | 1       |
| 10 | C14-288               | 648-288          | Middle gasket                             | 5       |
| 11 | C14-285               | 648-285          | Hole guides                               | 5       |
| 12 | C14-960               | 649-960          | Manifold                                  | 1       |
|    | C14-793               | 649-793          | O-ring seal                               | 4       |
| 13 | C14-964               | 649-964          | Upper body                                | 1       |
|    | C14-962               | 649-962          | High frequency socket                     | 1       |
|    | C14-963               | 649-963          | High frequency pin                        | 1       |
| 14 | C14-961               | 649-961          | Head cover assembly                       | 1       |
|    | C14-866               | 649-966          | Torch tube cover                          | 1       |
|    | C14-765               | 649-765          | IC300 one touch torch                     | 1       |
| 15 | C14-118*              | N/A              | Lower body assembly (includes items 4-12) | 1       |
|    | C14-010               | N/A              | O-ring                                    | 5       |
|    | C14-283               | 648-283          | O-ring                                    | 5       |
|    | C14-284               | 648-284          | O-ring                                    | 5       |
|    | 027055                | N/A              | Lubricant .25 oz. (7 ml) tube             | 1       |

\*Centricut part features a unique Hypertherm design that differs from the OEM design.





For more information on Centricut products,  
visit [www.hypertherm.com/centricut](http://www.hypertherm.com/centricut)



# Centricut offers a wide variety of CO<sub>2</sub> laser consumables

- OEM quality
- Competitive price
- World-class customer support





For more information on Centricut products, visit [www.hypertherm.com/centricut](http://www.hypertherm.com/centricut)

Hypertherm, Centricut, SilverLine and CoolFlow are trademarks of Hypertherm Inc., and may be registered in the United States and/or other countries. All other trademarks are the property of their respective owners.

One of Hypertherm's long-standing core values is a focus on minimizing our impact on the environment. Doing so is critical to our, and our customers' success. We are always striving to become better environmental stewards; it is a process we care deeply about.

© 8/2013 Hypertherm Inc. Revision 3  
880470



**Hypertherm®**  
**Cut with confidence®**

